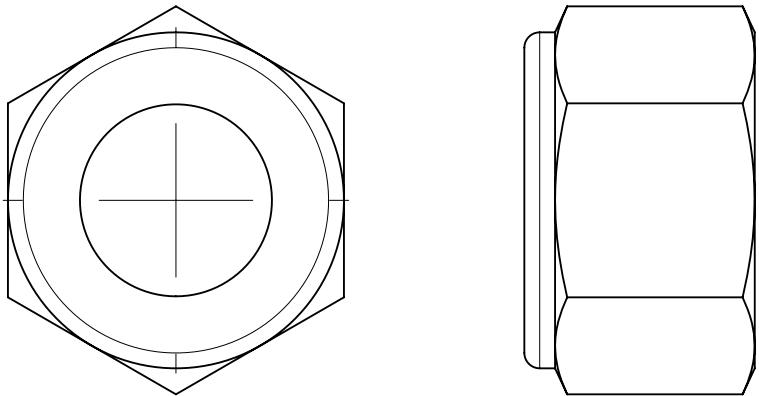


THIS DRAWING IS THE PROPERTY OF TRONAIR, INC. IT IS FURNISHED TO YOU FOR CONFIDENTIAL INFORMATION PURPOSES ONLY AND IS NOT TO BE DISCLOSED TO ANYONE OR REPRODUCED OR USED FOR MANUFACTURING PURPOSES WITHOUT THE EXPRESS WRITTEN PERMISSION OF TRONAIR, INC.

REVISIONS					
REV	DESCRIPTION	EC #	DWN	CHK	DATE
C	REVISED/REDRAWN TO CADAM	6986	MLB	WJL	2/22/1996
C1	REMOVED GR2 NUT	N/A	-	-	4/19/2016
D	ADDED DASH NUMBER -1120, REDRAWN IN SOLIDWORKS.	24310	PRB	KJY	4/6/2023

DASH NUMBER	DIAMETER	THREAD PER INCH	GRADE
-1000	#4	40	5
-1010	#6	32	5
-1020	#8	32	5
-1030	#10	24	5
-1035	#10	32	5
-1040	#12	24	5
-1050	1/4"	20	5
-1055	1/4"	28	5
-1060	5/16"	18	5
-1065	5/16"	24	5
-1070	3/8"	16	5
-1075	3/8"	24	5
-1080	7/16"	14	5
-1085	7/16"	20	5
-1090	1/2"	13	5
-1095	1/2"	20	5
-1100	5/8"	11	5
-1105	5/8"	18	5
-1110	3/4"	10	5
-1115	3/4"	16	5
-1120	1"	8	5
-1125	1"	14	5
-1130	1-1/4"	7	5
-1140	1-1/2"	6	5



EXAMPLE PART NUMBER:

G-1202-1050

TYPE/FINISH

DIAMETER

BASE NUMBER

CATEGORY

NOTES:

TYPE AND FINISH BREAKDOWN:

COARSE THREADS, UNC-2A:

0 - ZINC PLATED  
3 - PLAIN

FINE THREADS, UNF-2A:

5 - ZINC PLATED  
8 - PLAIN

ALL STOPNUTS MUST BE GRADE 5 OR BETTER

MADE FROM PURCHASED			BREAK ALL SHARP EDGES AND CORNERS INTERPRET PER ASME Y14.5-2009			<div>TRONAIR</div> AIRCRAFT GROUND SUPPORT EQUIPMENT			
MATERIAL N/A			DIMENSIONS IN INCHES AND TOLERANCES PER BELOW UNLESS OTHERWISE SPECIFIED: <b>DIMENSION INCH [mm]:</b> .X [X] ± .1 [3] .XX [.X] ± .03 [0.8] .XXX [.XX] ± .010 [0.25] .XXXX [.XXX] ± .0030 [0.076] <b>FRACTION INCH [mm]:</b> 1/XX [1/X] ± 1/16 [1.6] <b>ANGULAR DEGREE [RADIAN]:</b> X [XXX] ± .5 [.001]			DWN BY PRB		CKD BY KJY	DATE 04/10/2023
FINISH N/A						STOPNUT, ELASTIC			
THIRD ANGLE PROJECTION						SCALE: 1:4		SIZE <b>B</b>	
DO NOT SCALE DRAWING									
						WEIGHT:		SHEET 1 OF 1	
			G-1202		REV D				