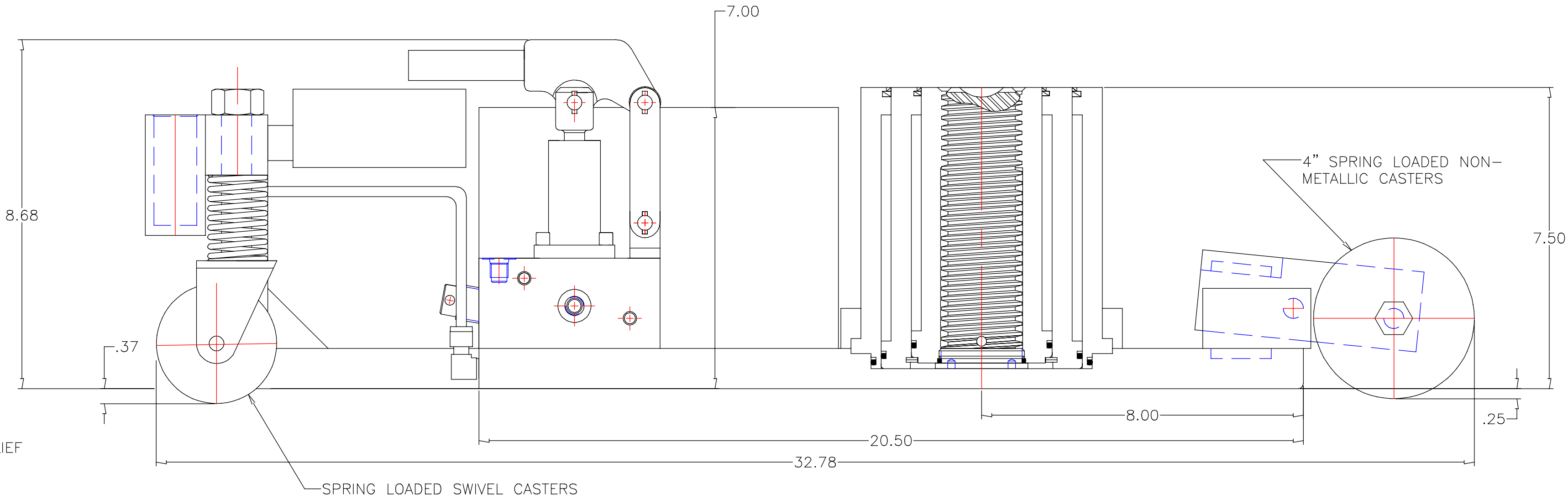
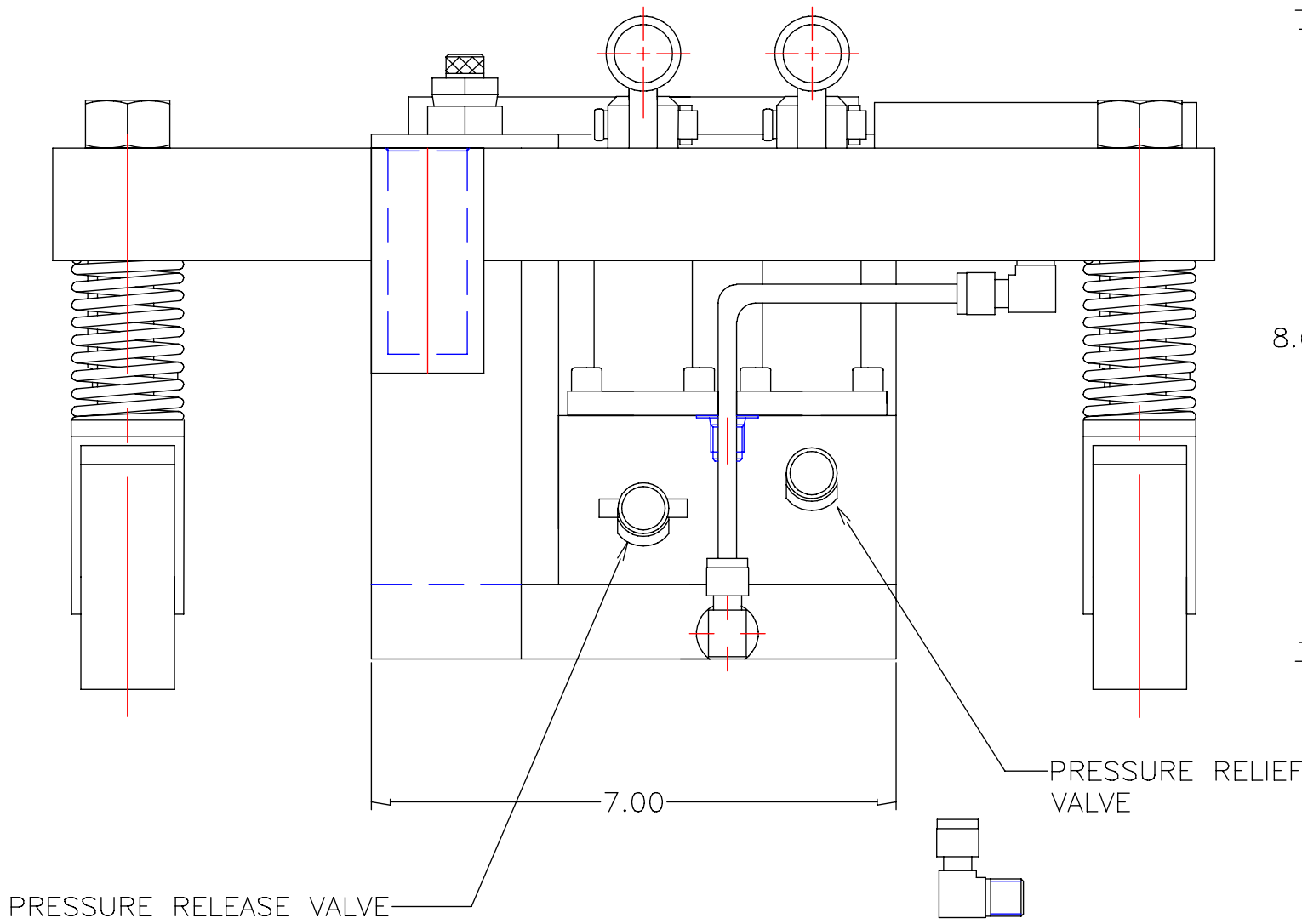
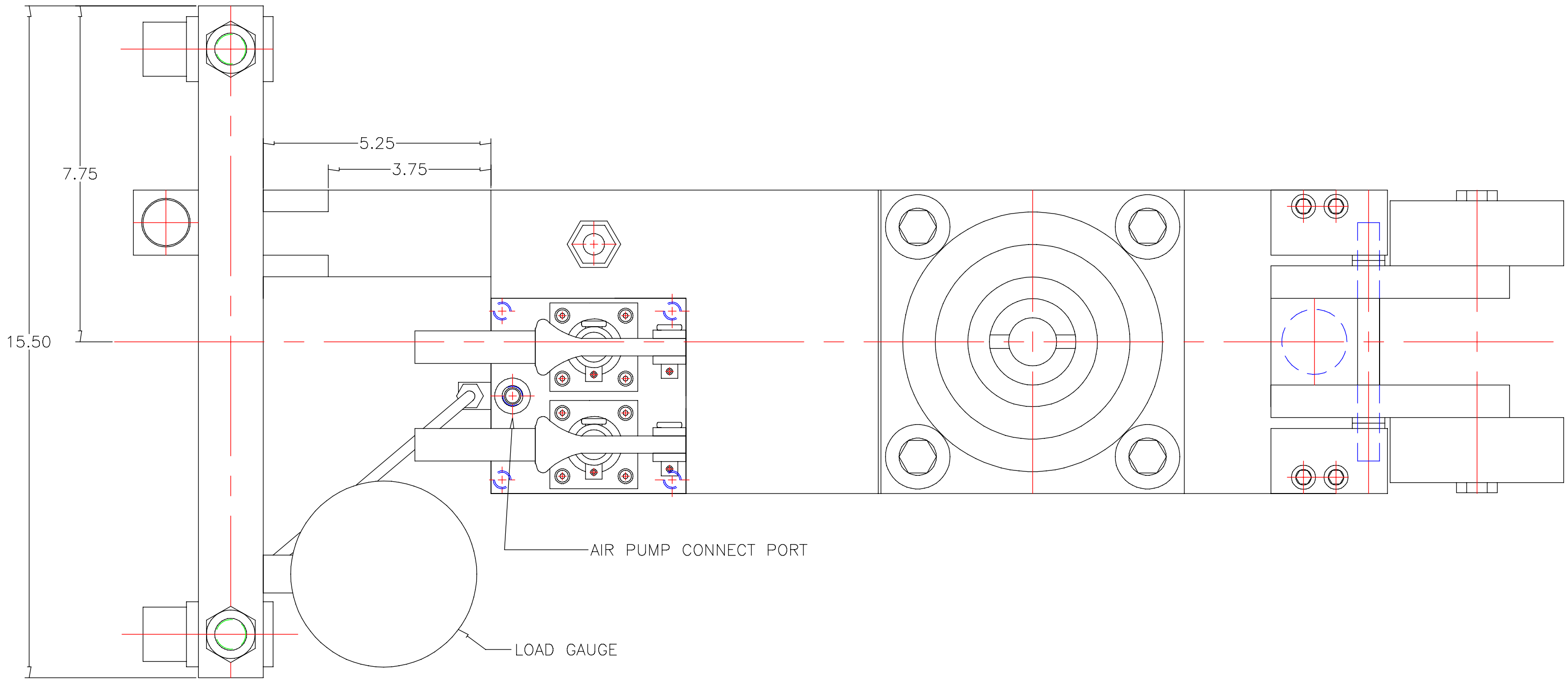
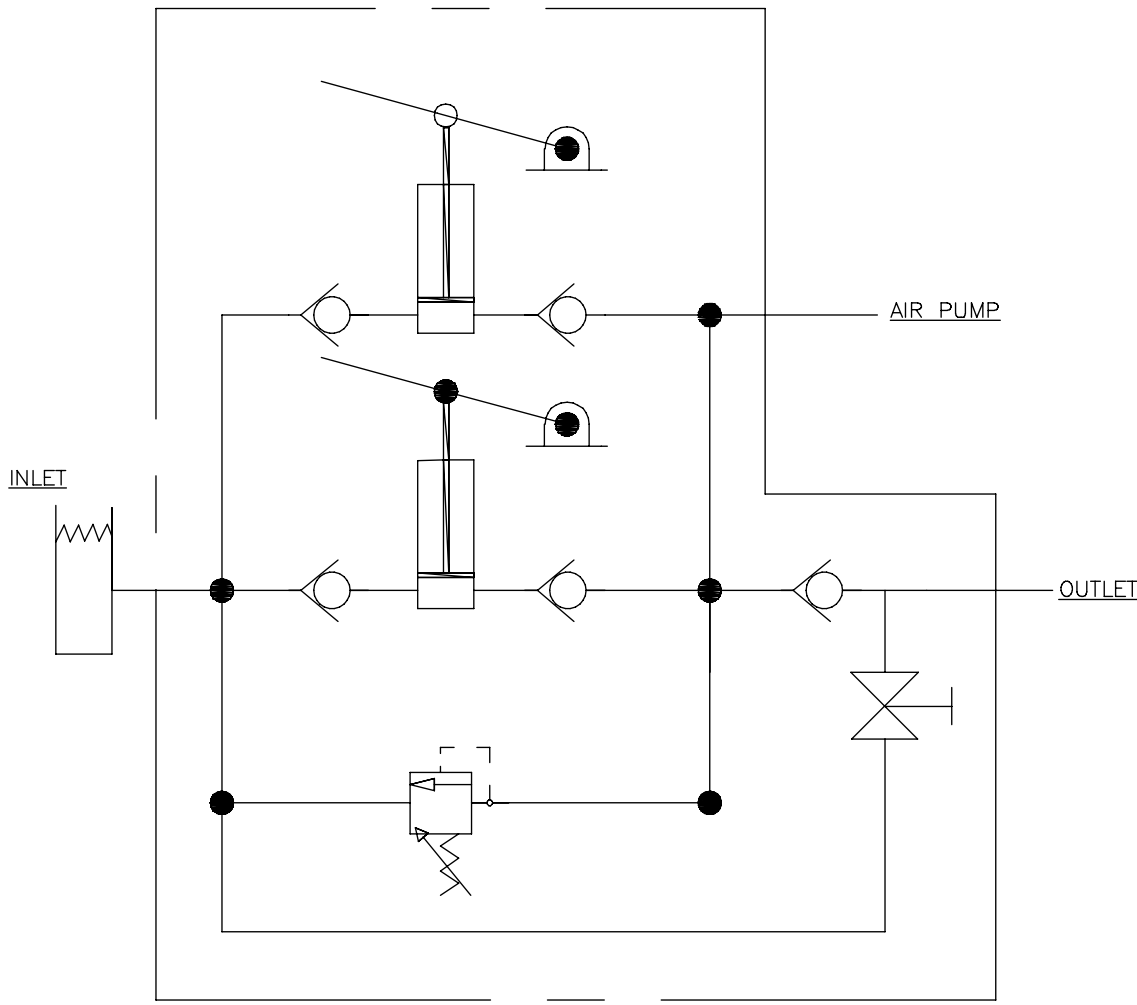


REVISIONS					
REV	DESCRIPTION	EC#	DWN	CHK	DATE
A	ORIGINAL RELEASE	22341	-	-	12-18-20
B	ADDED GAUGE CALIBRATION REQUIREMENTS	24057	ADO	KJY	07-10-23

HYDRAULIC SCHEMATIC



SPECIFICATIONS:

- CAPACITY: 35 TON (70,000 LBS)
- CONSTRUCTION: STEEL
- FLUID: MIL-PRF-5606
- HYDRAULIC STAGES: 2
- MECHANICAL STAGES: 1
- RELIEF PRESSURE: 8,000 +500/-0 PSI
- SPRING LOADED CASTERS
- 36 INCH HANDLE FOR JACKING AND MANUVERING
- MOUNTING FOR OPTIONAL AIR PUMP
- EQUIPT WITH LOAD GAUGE NIST 1.5% F.S CALIBRATION
- NOTE: JACK IS EQUIPT WITH A CE TANDEM PUMP. 1" DIA PISTON FOR FAST EXTENSION AND A 1/2" PISTON FOR JACKING FORCE.
- CONTROL LINE PART NO.: CXD-2100TR

NOTE:
THE "TR" IN THE CXD NUMBER IS A
TEMPORARY DESIGNATION WHICH WILL BE
REPLACED, AT THE TIME OF YOUR FIRST
ORDER, BY NUMERALS WHICH WILL SPECIFY
EXACT FINAL CONFIGURATION FOR FUTURE
REFERENCE AND ORDERING PURPOSES.

MANDATORY SOURCE AND MANUFACTURER:

CONTROL LINE EQUIPMENT, INC.
14750 INDUSTRIAL PKWY
CLEVELAND, OH. 44135
1-216-433-7766

MADE FROM PURCHASED		BREAK ALL SHARP EDGES AND CORNERS INTERPRET PER ASME Y14.5-2009		TRONAIR AIRCRAFT GROUND SUPPORT EQUIPMENT	
MATERIAL N/A		DIMENSIONS IN INCHES AND TOLERANCES PER BELOW UNLESS OTHERWISE SPECIFIED: DIMENSION INCH [mm]: X [X] ± .1 [3] .XX [X] ± .03 [0.8] .XXX [XX] ± .010 [0.25] .XXXX [XXX] ± .0030 [0.076] FRACTION INCH [mm]: 1/XX [1/X] ± 1/16 [1.6] ANGULAR DEGREE [RADIAN]: X [XXX] ± .5 [0.01]		DWN BY NCS	
FINISH MILL		SCALE: 1:12		CRD BY ADO	
THIRD ANGLE PROJECTION		DO NOT SCALE DRAWING		DATE 12/18/2020	
		SIZE D		REV B	
				JACK, AXLE (CE)	
				HC-2920	
				WEIGHT: 156 LB	
				SHEET 1 OF 1	