

THIS DRAWING IS THE PROPERTY OF TRONAIR, INC. IT IS FURNISHED TO YOU FOR CONFIDENTIAL INFORMATION PURPOSES ONLY AND IS NOT TO BE DISCLOSED TO ANYONE OR REPRODUCED OR USED FOR MANUFACTURING PURPOSES WITHOUT THE EXPRESS WRITTEN PERMISSION OF TRONAIR, INC.

REVISIONS					
REV	DESCRIPTION	EC #	DWN	CHK	DATE
-	PROTOTYPE RELEASE	22499	-	-	8/20/2021
D	PRODUCTION RELEASE, NVSP-24-042-CA WAS QTY 3, NVSP-24-042-CB WAS QTY 3, ADDED INS-2721, ADDED RT00-14-001-SA, REMOVED G-1351-18, ADDED G-1351-18-SS QTY 8	23375	PRB	SDK	2/22/2022
D1	ADDED H-1204-10, QTY 16"	23375	PRB	-	6/15/2022
E	REMOVED A-RTT-00450 SPEC, Z-11651 WAS Z-11265, REMOVED A-RTT12-00452, REMOVED H-1204-10	23798	PRB	-	7/15/2022
F	ADDED G-1417-19 AND G-1202-1035	25480	PKA	KJY	3/7/2023
F	ADDED INS-2639	25953	PKA	KJY	2/14/2025
G	ADDED INS-2945	29057	PKA	KJY	6/6/2025

NOTE: INSTALLATION DETAILS FOR MAJOR SUBASSEMBLIES ARE SHOWN IN THE PRINT FOR THOSE ASSEMBLIES. REFER TO THE MAJOR SUBASSEMBLY PRINTS FOR ALL DETAILED ASSEMBLY INFORMATION.

ITEM NO.	PART NUMBER	DESCRIPTION	QTY
1	A-RTT12-00123	LUG NUT, REAR	20
2	A-RTT50-0151	SEAT FRAME SPACER A	1
3	A-RTT50-0152	SEAT FRAME SPACER B	1
4	G-1152-106210	82 DEG FHC, 5/16-18 X 1.0	10
5	G-1250-1090W	FLATWASHER, 1/2 WIDE	12
6	G-1351-18-SS	RIVET, 3/16 OPEN-END SS	8
7	G-1420-109022	BOLT, 1/2-13 X 2-1/4 H.H. GR 8	6
8	G-1420-109024	BOLT, 1/2-13 X 2-1/2" HEX HD GR 8	4
9	G-1727-1090	NUT, 1/2-13 TOP LOCK ZINC	10
10	J-7360	BATTERY SLIDE	2
11	NVSP-24-042-CA	METAL CORE EDGE TRIM, 1/8	10
12	NVSP-24-042-CB	METAL CORE EDGE TRIM, 1/4	12
13	RT50-54-001-KA	REAR WHEEL AND TIRE ASSEMBLY	2
14	RT00-14-001-SA	RTT DATA PLATE	1
15	ST00-14-007-SA	SWITCH DATA PLATE	1
16	V-2901	TRACTOR DECAL, RTT-50	2
17	Z-10739-00	WLD, TIE DOWN (P)	2
18	Z-11145	ASY, VEHICLE CHASSIS	1
19	Z-11200	AXLE ASSEMBLY	1
20	Z-11202	ASY, STEERING SYSTEM	1
21	Z-11233	ASY, BRAKE SYSTEM	1
22	Z-11235	ASY, ELECTRICAL SYSTEM	1
23	Z-11651	SEAT ASSEMBLY, RTT	1
N/A	INS-2721	INS, TEST PROCEDURE, RTT-50	1
25	G-1417-19	CLAMP, CABLE	2
26	G-1202-1035	STOPNUT, #10-32 ELASTIC	2
27	INS-2639	RTT/STT BUILD CHECKLIST	1
28	INS-2945	RTT-50 BLEED PROCEEDURE	1

MADE FROM  
SEE BOM

MATERIAL  
N/A

FINISH  
N/A

THIRD ANGLE  
PROJECTION

SCALE: 1:8

SIZE  
C

DO NOT SCALE DRAWING

BREAK ALL SHARP EDGES AND CORNERS  
INTERPRET PER ASME Y14.5-2009

DIMENSIONS IN INCHES AND TOLERANCES  
PER BELOW UNLESS OTHERWISE SPECIFIED:  
DIMENSION INCH [mm]:  
.X [X] ± .1 [3]  
.XX [X] ± .03 [0.8]  
.XXX [XX] ± .010 [0.25]  
.XXXX [XXX] ± .0030 [0.076]  
FRACTION INCH [mm]:  
1/XX [1/X] ± 1/16 [1.6]  
ANGULAR DEGREE [RADIAN]:  
X [XXX] ± .5 [0.01]

**TRONAIR**

AIRCRAFT GROUND  
SUPPORT EQUIPMENT

DWN BY  
PRB

CKD BY  
SK

DATE  
8/20/2021

TUGGER 4000 DBP/50,000 MAX

REV  
G

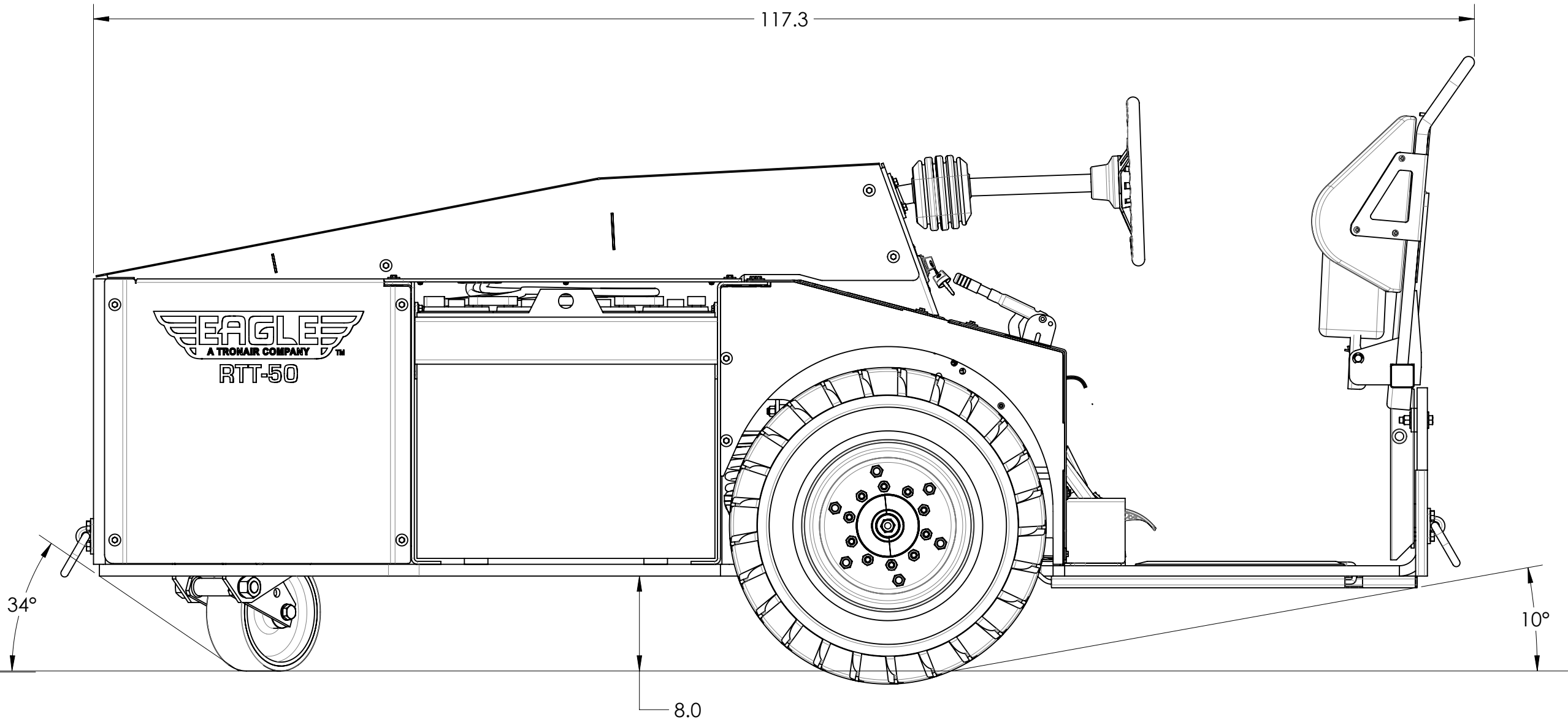
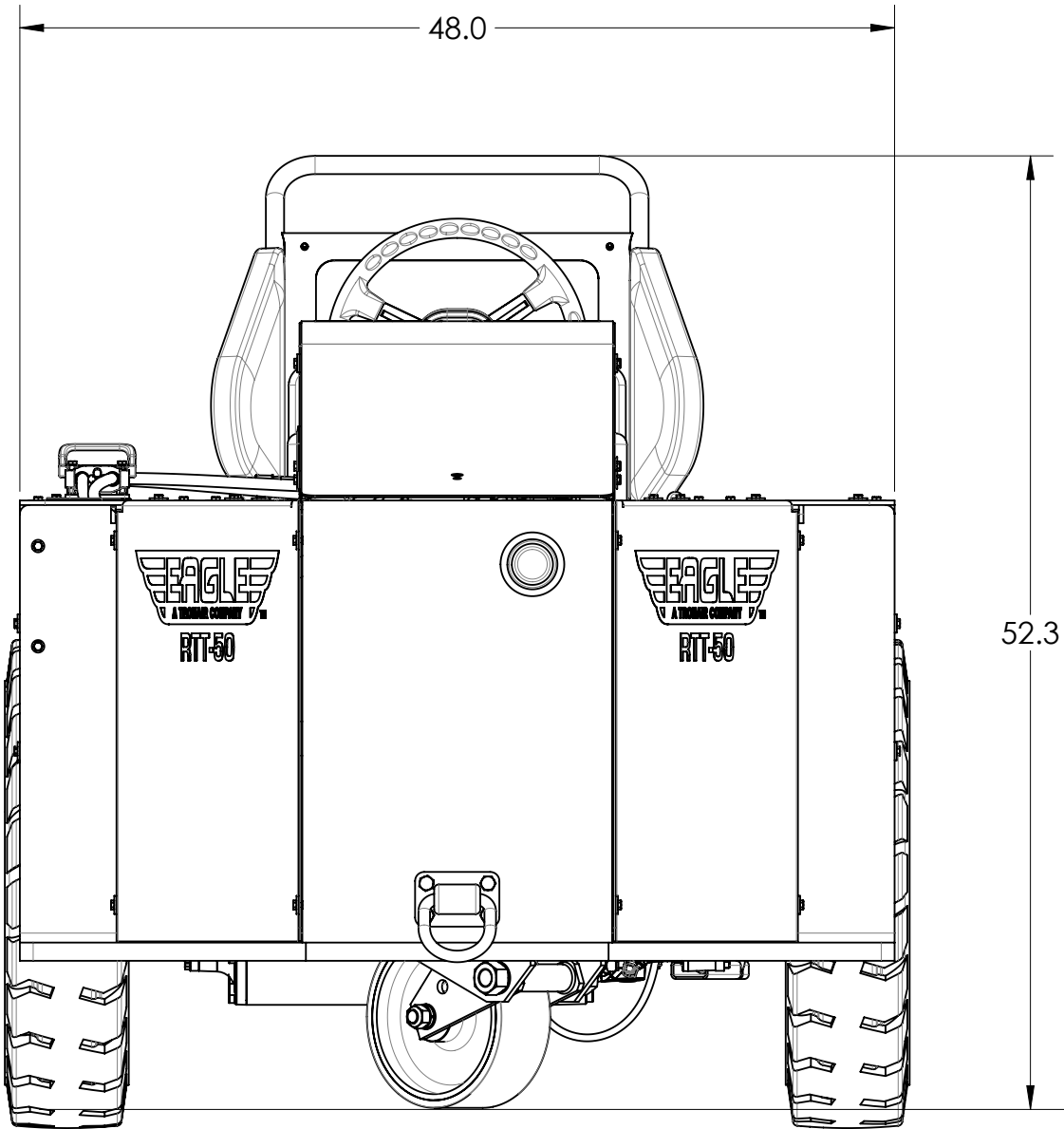
WEIGHT:


SHEET 1 OF 3

THIS DRAWING IS THE PROPERTY OF TRONAIR, INC. IT IS FURNISHED TO YOU FOR CONFIDENTIAL INFORMATION PURPOSES ONLY AND IS NOT TO BE DISCLOSED TO ANYONE OR REPRODUCED OR USED FOR MANUFACTURING PURPOSES WITHOUT THE EXPRESS WRITTEN PERMISSION OF TRONAIR, INC.

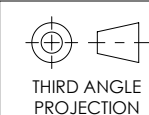
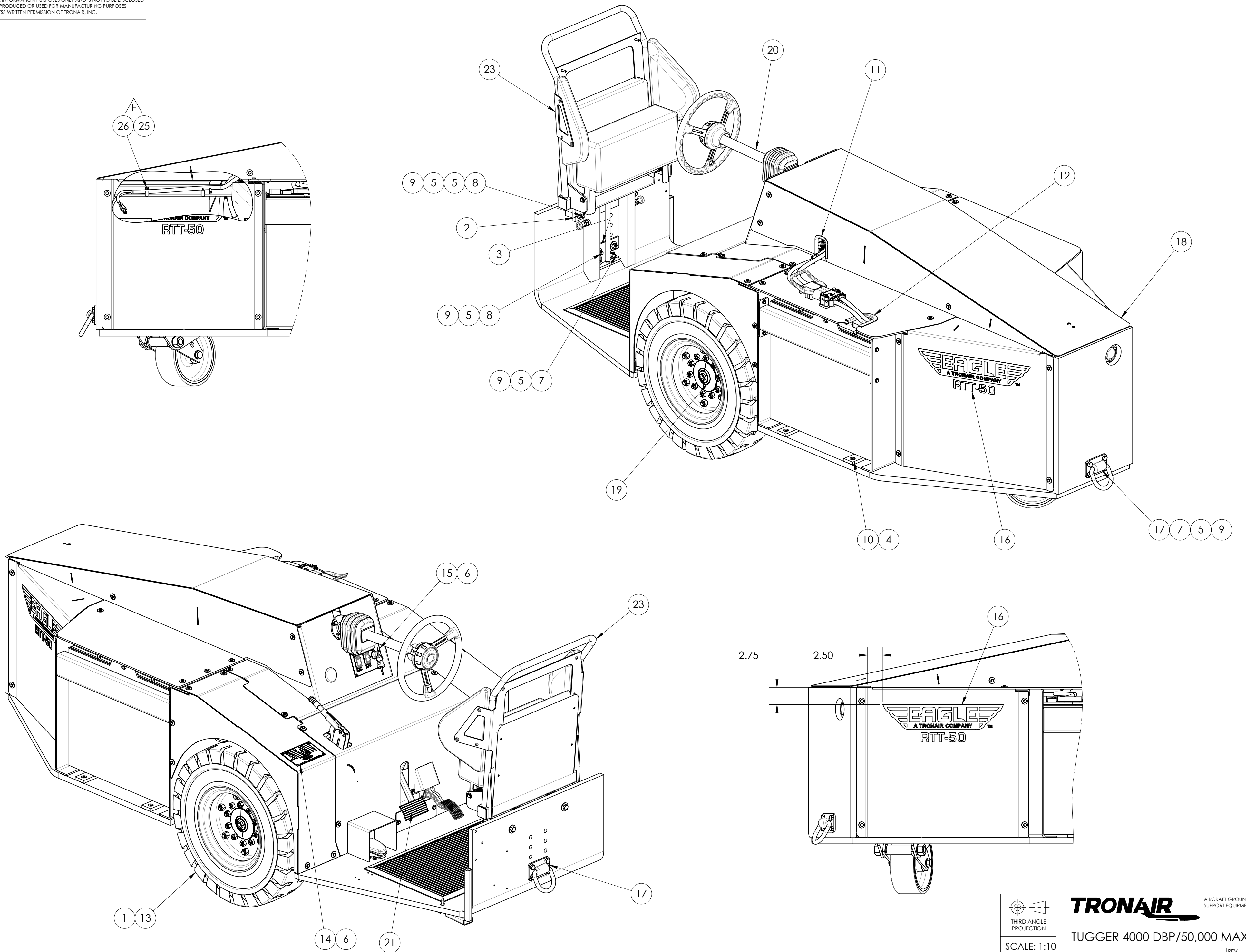
R88 TURN RADIUS

GVW WITH STANDARD BATTERY: 6,700 LBS.  
GAW (REAR AXLE): 4,500  
GAW (FRONT AXLE): 2,200  
CURB WEIGHT (NO BATTERY): 3,800 LBS.



 THIRD ANGLE PROJECTION	<b>TRONAIR</b> <small>AIRCRAFT GROUND SUPPORT EQUIPMENT</small>		
	TUGGER 4000 DBP/50,000 MAX		
	SCALE: 1:10 DO NOT SCALE	REV <b>RTT-50</b>	<b>G</b>
	SIZE <b>C</b>	WEIGHT:	SHEET 2 OF 3

THIS DRAWING IS THE PROPERTY OF TRONAIR, INC. IT IS FURNISHED TO YOU FOR CONFIDENTIAL INFORMATION PURPOSES ONLY AND IS NOT TO BE DISCLOSED TO ANYONE OR REPRODUCED OR USED FOR MANUFACTURING PURPOSES WITHOUT THE EXPRESS WRITTEN PERMISSION OF TRONAIR, INC.



THIRD ANGLE  
PROJECTION

SCALE: 1:10  
DO NOT SCALE

SIZE **C**

**TRONAIR**

AIRCRAFT GROUND  
SUPPORT EQUIPMENT

TUGGER 4000 DBP/50,000 MAX

RTT-50

REV **G**

WEIGHT:

SHEET 3 OF 3