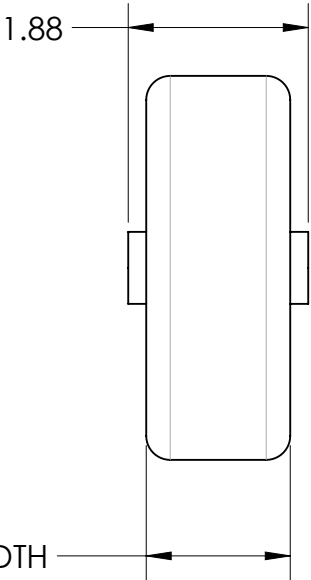
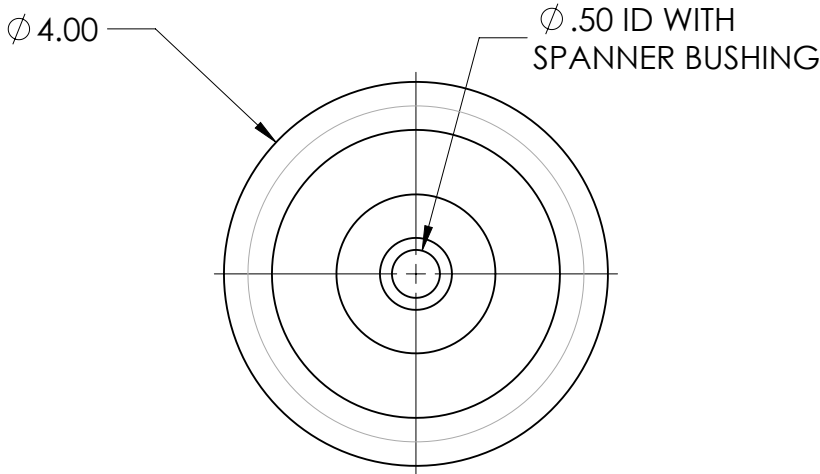
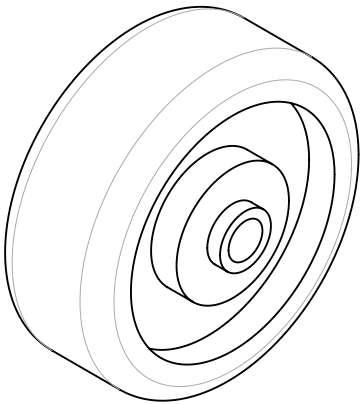

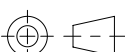


THIS DRAWING IS THE PROPERTY OF TRONAIR, INC. IT IS FURNISHED TO YOU FOR CONFIDENTIAL INFORMATION PURPOSES ONLY AND IS NOT TO BE DISCLOSED TO ANYONE OR REPRODUCED OR USED FOR MANUFACTURING PURPOSES WITHOUT THE EXPRESS WRITTEN PERMISSION OF TRONAIR, INC.

REVISIONS					
REV	DESCRIPTION	EC #	DWN	CHK	DATE
A	ORIGINAL RELEASE	10266	SLR	WJL	08/13/99
B	ADDED NOTE	16292	JRD	JDW	03/05/08
B	UPDATED DRAWING		AS	PEH	02/11/2020
C	SEVERAL CORRECTIONS TO SPECIFICATIONS	26591	SEB	CSR	8/21/2023



SPECIFICATIONS:
WHEEL WITH BEARING AND SPANNER BUSHING
LOAD CAPACITY: 375 LB OR HIGHER
WHEEL MATERIAL: POLYOLEFIN PLASTIC, 70±5 SHORE D DUROMETER
WHEEL COLOR: BLACK
BEARING MATERIAL: DELRIN
SPANNER BUSHING: .50" ID X 1.875" LONG

MADE FROM PURCHASED		BREAK ALL SHARP EDGES AND CORNERS INTERPRET PER ASME Y14.5-2009		<div>TRONAIR</div> AIRCRAFT GROUND SUPPORT EQUIPMENT					
MATERIAL POLYOLEFIN		DIMENSIONS IN INCHES AND TOLERANCES PER BELOW UNLESS OTHERWISE SPECIFIED: DIMENSION INCH [mm]: .X [X] ± .1 [3] .XX [.X] ± .03 [0.8] .XXX [.XX] ± .010 [0.25] .XXXX [.XXX] ± .0030 [0.076] FRACTION INCH [mm]: 1/XX [1/X] ± 1/16 [1.6] ANGULAR DEGREE [RADIAN]: X [XXX] ± .5 [.001]		DWN BY TLA		CKD BY RHG	DATE 12-16-81		
FINISH				WHEEL					
THIRD ANGLE PROJECTION 				U		U-1002		REV C	
SCALE: 1:2				SIZE B		WEIGHT:			SHEET 1 OF 1
DO NOT SCALE DRAWING									