



Model: 1179-8000
Portable Maintenance Platform

04/2018 – Rev. 01

REVISION
01

DATE
04/2018

TEXT AFFECTED
Original release

TABLE OF CONTENTS

	<u>PAGE</u>
1.0 PRODUCT INFORMATION	1
1.1 DESCRIPTION.....	1
1.2 MODEL & SERIAL NUMBER.....	1
1.3 MANUFACTURER	1
1.4 SPECIFICATIONS	1
2.0 SAFETY INFORMATION.....	1
2.1 USAGE AND SAFETY INFORMATION	1
3.0 PREPARATION PRIOR TO FIRST USE	1
3.1 GENERAL INSPECTION	1
4.0 TRAINING	1
4.1 TRAINING REQUIREMENTS	1
4.2 TRAINING PROGRAM	1
4.3 OPERATOR TRAINING	1
5.0 OPERATION.....	2
5.1 RAISING PROCEDURE	2
5.2 LOWERING PROCEDURE.....	2
6.0 MAINTENANCE	2
7.0 PROVISION OF SPARES	2
7.1 SOURCE OF SPARE PARTS.....	2
7.2 RECOMMENDED SPARE PARTS LISTS	2
8.0 IN SERVICE SUPPORT.....	2
9.0 GUARANTEES/LIMITATION OF LIABILITY	3

This product can not be modified without the written approval of Tronair, Inc. Any modifications done without written approval voids all warranties and releases Tronair, Inc., its suppliers, distributors, employees, or financial institutions from any liability from consequences that may occur. Only Tronair OEM replacement parts shall be used.

1.0 PRODUCT INFORMATION

1.1 DESCRIPTION

Portable Maintenance Platform

1.2 MODEL & SERIAL NUMBER

Reference nameplate on unit

1.3 MANUFACTURER

Columbus**Jack**/Regent

1 Air Cargo Pkwy East

Swanton, Ohio 43558 USA

Telephone: 614.443.7492

Fax: 614.444.9337

E-mail: sales@columbusjack.com

Website: www.columbusjack.com

1.4 SPECIFICATIONS

Capacity 500 lbs (226.8 kg)

Minimum Height 136 in (345.44 cm)

Maximum Height 348 in (883.92 cm)

2.0 SAFETY INFORMATION

2.1 USAGE AND SAFETY INFORMATION

To insure safe operations please read the following statements and understand their meaning. Also refer to your equipment manufacturer's manual for other important safety information. This manual contains safety precautions which are explained below. Please read carefully.



WARNING! — Warning is used to indicate the presence of a hazard that **can cause severe personal injury, death, or substantial property damage** if the warning notice is ignored.

CAUTION! — Caution is used to indicate the presence of a hazard that **will or can cause minor personal injury or property damage** if the caution notice is ignored.

3.0 PREPARATION PRIOR TO FIRST USE

3.1 GENERAL INSPECTION

Inspect for physical damage and missing parts.

4.0 TRAINING

4.1 TRAINING REQUIREMENTS

The employer of the operator is responsible for providing a training program sufficient for the safe operation of the unit.

4.2 TRAINING PROGRAM

The employer provided operator training program should cover safety procedures concerning use of the unit in and around the intended aircraft at the intended aircraft servicing location.

4.3 OPERATOR TRAINING

The operator training should provide the required training for safe operation of the unit.

NOTE: Maintenance and Trouble Shooting are to be performed by a skilled and trained technician.

5.0 OPERATION

5.1 RAISING PROCEDURE

1. Extend outriggers and lock in place.
2. Close the needle valve.
3. Operate hand pump until platform is at desired height.



WARNING!

Both lock pins must be inserted thru struts after raising platform before use.

4. Insert lock pin thru struts.



CAUTION!

Always lock caster brakes after positioning stand.

5. Move stand to desired location and lock rear casters.

5.2 LOWERING PROCEDURE

1. Unlock the rear caster brakes.
2. Pull stand away from the working position.
3. Remove lock pin from struts.
4. Slowly open needle valve to lower platform.

6.0 MAINTENANCE

Every 3 Months:

- Apply a few drops of oil to pivot points.

Every 6 Months:

- Apply a few drops of oil to pivot points.
- Grease major pivot points using grease fittings provided.

Every 12 Months:

- Verify hydraulic fluid level is no greater than 1-1/2 inches down from top of tank with stand in lowest position. (Use Mobil DTE-11 or equal as necessary)
- Replace hydraulic filter cartridge.

7.0 PROVISION OF SPARES

7.1 SOURCE OF SPARE PARTS

Spare parts may be obtained from the manufacturer:

ColumbusJack/Regent
1 Air Cargo Pkwy East
Swanton, Ohio 43558 USA

Telephone: 614.443.7492
Fax: 614.444.9337
E-mail: sales@columbusjack.com
Website: www.columbusjack.com

7.2 RECOMMENDED SPARE PARTS LISTS

Reference the following page(s) for Replacement Parts and Kits available.

8.0 IN SERVICE SUPPORT

Contact Columbus Jack. for technical services and information. See Section 1.3 – Manufacturer.

9.0 GUARANTEES/LIMITATION OF LIABILITY

1. ColumbusJACK Corporation, (Seller) warrants each new product of its manufacture to be free from defects in material or workmanship, under proper, reasonable and normal use and service, and for a period of twelve (12) months after date of shipment from Seller's Swanton, OH. USA facility.
2. Where Buyer claims an alleged defect in material or workmanship and so advises Seller in writing within ten (10) days after discovery thereof, then and in such event, Buyer shall return said equipment, transportation prepaid, to the Seller, provided such return is timely and within twelve (12) months form date of original shipment. This warranty and liability of the Seller is expressly limited solely to replacement of repair of defective parts or goods, and return at Buyer's expense to Seller after find by Seller the product was defective prior to original shipment or, at the option of Seller, to making refund to Buyer of the purchase price for said product.
3. It is further expressly understood and agreed that:
 - a. THERE IS NO WARRANTY, representation of condition OF ANY KIND, express or implied, (INCLUDING NO WARRANTY OF MERCHANT-ABILITY OR OF FITNESS) EXCEPT THAT THE MATERIAL SHALL BE OF THE QUALITY SPECIFIED HEREIN, and none shall be implied by law. Except as otherwise provided herein, quality shall be in accordance with seller's specifications. Final determination of the material for the use contemplated by Buyer is the sole responsibility of Buyer and Seller shall have no responsibility in connection with such suitability, and
 - b. The Buyer's sole and exclusive remedy shall be repair or replacement of defective parts by the Seller. Should the goods, in the judgment of Seller, preclude the remedying of the warranted defects by repair or replacement, the buyer's sole and exclusive remedy shall the be the refund of the purchase price, and
 - c. Seller shall not be liable for prospective profits or special, indirect or consequential damages, nor shall any recovery of any kind against Seller be greater in amount than the purchase price of the specific material sold and causing the alleged loss, damage or injury. Buyer assumes all risk and liability for loss, damage or injury to persons or property of Buyer or others arising out of use or possession of any product or part sold hereunder, and
 - d. The Seller shall in no way be deemed or held to be obligated, liable or accountable upon or for any guarantees or warranties, express or implied, or created by statute or by operation of law or otherwise, in any manner of form beyond its express agreement above set forth, and
 - e. No warranty herein shall apply to any product which shall have been repaired or altered, unless such alteration or repair has been made by Seller or where, after return to and inspection by Seller, the product is found by Seller to have been subject to misuse, negligence or accident, and
 - f. No warranty of any nature is made by Seller as to any component forming a part of the product sold and Buyer shall receive only such warranties offered by such other manufacturer pertinent to such component, and
 - g. Seller does not assume nor does Seller authorize any other person to assume for it any other liability or make any warranty in connection with the sale of its products.

The obligations of ColumbusJACK expressly stated herein are in lieu of all other warranties or conditions expressed or implied. **Any unauthorized modification of the ColumbusJACK products or use of the ColumbusJACK products in violations of cautions and warnings in any manual (including updates) or safety bulletins published or delivered by ColumbusJACK will immediately void any warranty, express or implied and ColumbusJACK disclaims any and all liability for injury (WITHOUT LIMITATION and including DEATH), loss or damage arising from or relating to such misuse.**

This page left blank intentionally.

When ordering replacement parts/kits, please specify model, serial number and color of your unit.



Parts List

When ordering replacement parts/kits, please specify model, serial number and color of your unit.

Item	Part Number	Description	Qty
1	15W5999	Base Frame Weld	1
2	15W1821	Strut Base Weld	2
3	15W6006	Strut Rod Weld	2
4	15W3839	Towbar Weldment	1
5	15W5715	Outrigger Weld	4
6	15W6000	Lift Arm Weld	1
7	15W6003	Step Stabilizer Weld	2
8	15W6004	Handrail Weld	4
9	15W5725	Platform Weld	1
10	15W1817	Reinforced Tube Weld L.H.	1
11	15W1818	Reinforced Tube Weld R.H.	1
12	15W5723	Side Handrail Weld	2
13	15W5724	Front Handrail Weld	1
14	15W1809	Step Weld	24
15	15L6660	Sleeve	4
16	15O1297	Cap Screw	4
17	15O586	Nylok Nut	32
18	15L6691	Sleeve	4
19	15O625	Cap Screw	4
20	15L6661	Sleeve	4
21	15O1615	Cap Screw	4
22	15O462	Nylok Nut	20
23	15L6662	Sleeve	7
24	15L16840	Bolt Mod.	2
25	15O4213	Nylok Jam Nut	2
26	15O811	Cap Screw	5
27	15O595	Nylok Jam Nut	2
28	15L6664	Sleeve	6
29	15O302	Washer	6
30	15O1453	Cap Screw	6
31	15L6663	Sleeve	2
32	15O1614	Cap Screw	2
33	15L6656	Step Pivot Sleeve	48
34	15O246	Washer	164
35	15O150	Cap Screw	48
36	15L6653	Collar	48
37	15L6658	Linkage Sleeve	48
38	15L6657	Parallel Link	48
39	15L6659	Linkage Sleeve	68
40	15O751	Cap Screw	38

Parts list continued on following page.

Parts List

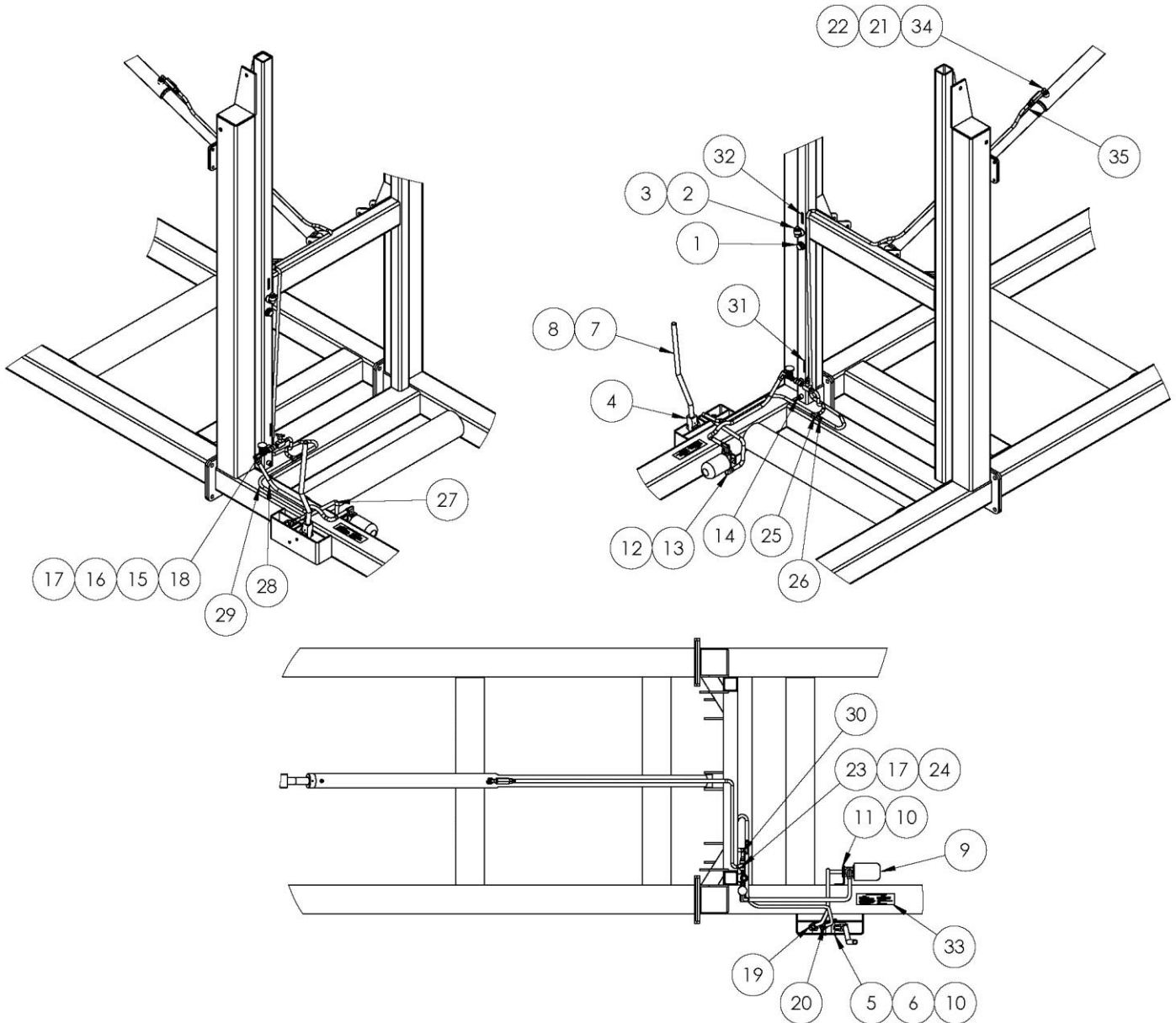
When ordering replacement parts/kits, please specify model, serial number and color of your unit.

Item	Part Number	Description	Qty
41	15O310	Cap Screw	48
42	15O308	Nylok Nut	144
43	15L6786	SupportLink	10
44	15O151	Cap Screw	10
45	15O5865	Grease Zerk	8
46	15O5866	Grease Zerk	8
47	15L6680	Sleeve	2
48	15L24863	Sleeve, Cylinder Base	1
49	15O1616	Cap Screw	2
50	15O1497	Cap Screw	1
51	15O320	Nylok Nut	18
52	15O567	Cap Screw	16
53	15O1503	Cap Screw	8
54	15O3063	Cap Screw	1
55	15O597	Nylok Nut	1
56	15O4704	Cap Screw	4
57	15O1617	Cap Screw	16
58	15O3235	Corner Bumper	2
59	15O204	Washer	8
60	15O3323	Self Tapping Screw	8
61	15F2963	Hydraulic Assembly	1
62	15L16864	Warning Placard	1
63	15O5895	Placard, Weights	4
65	15O1621	Quick Pin	2
66	15O1619	Caster (Rigid)	2
67	15O1618	Caster (Swivel)	2
68	15L17347	Placard-Brake On	2
69	15L17348	Placard-Brake Off	2
70	15O6104	Hydraulic Cylinder	1

This page left blank intentionally.

Parts List

When ordering replacement parts/kits, please specify model, serial number and color of your unit.



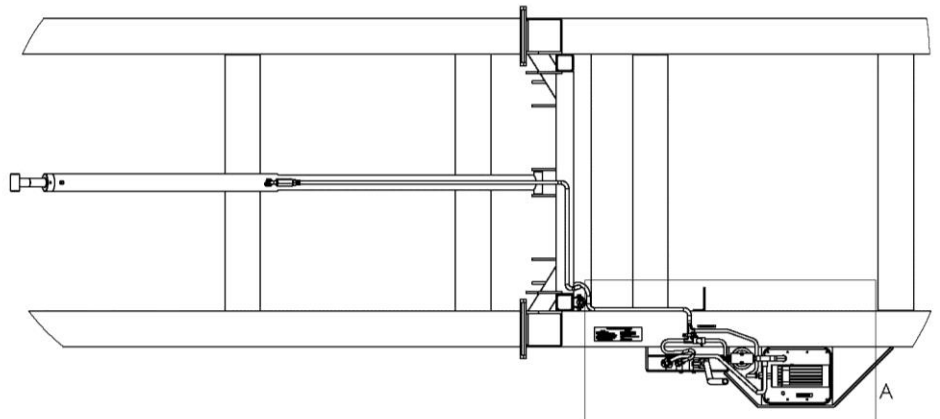
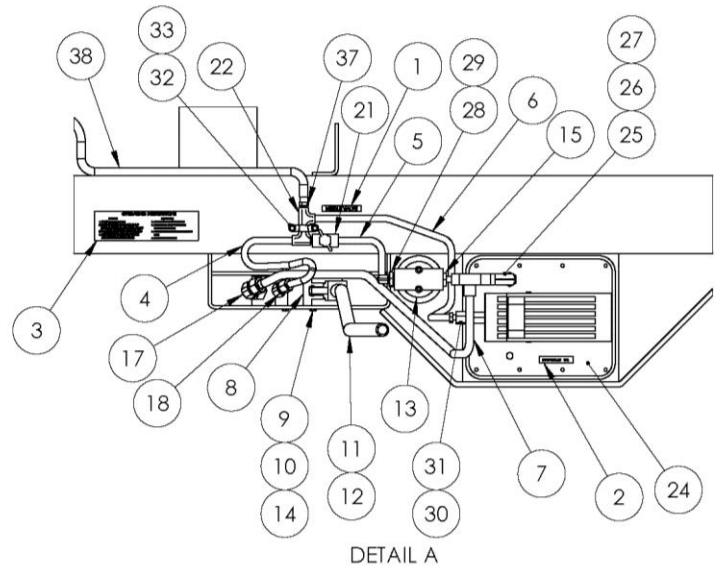
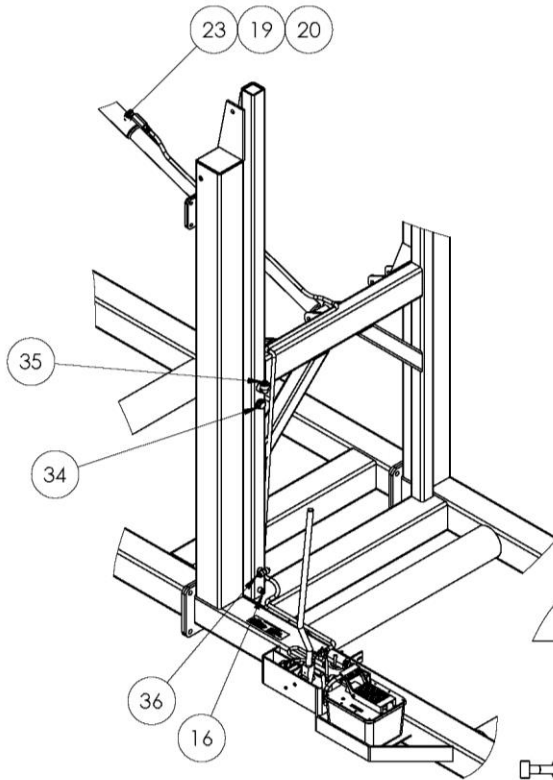
Parts List

When ordering replacement parts/kits, please specify model, serial number and color of your unit.

Item	Part Number	Description	Qty
	15F2963	Hydraulic Assembly ; consists of:	
1	1505939	Sight Plug	1
2	1502418	Hex Bushing	1
3	1502693	Breather	1
4	1504446	Dual Acting Pump	1
5	1503604	Cap Screw	2
6	150298	Nylok Nut	2
7	15L14430	Handle, Pump	1
8	150338	Roll Pin	1
9	1502749	Filter	1
10	150204	Washer.	4
11	1502552	Cap Screw.	2
12	1503057	Hex Bushing	2
13	1502080	Street Elbow	2
14	1502752	Sq Head Plug	1
15	1504847	Gate Valve	1
16	1502088	Hex Bushing	1
17	1501108	Hex Nipple	2
18	1501573	90 Deg Male Swivel	1
19	1504468	90 Deg Male Swivel	1
20	1504467	Swivel	1
21	1505937	Check Valve	1
22	150680	Swivel	1
23	1502995	Needle Valve	1
24	1502199	Straight Swivel	1
25	1503952	Male Tee	1
26	1502481	Female Swivel	1
27	15F2166	Hose Assembly	1
28	15F931	Hose Assembly	1
29	15F910	Hose Assembly	1
30	15F1914	Hose Assembly	1
31	15L13489	Placard	1
32	15L13490	Placard, Hydraulic Oil	1
33	15L14436	Operate Ins. Placard	1
34	1504000	90 Deg Swivel Fit Anchor	1
35	15F1975	Hose Assembly	1

Parts List

When ordering replacement parts/kits, please specify model, serial number and color of your unit.



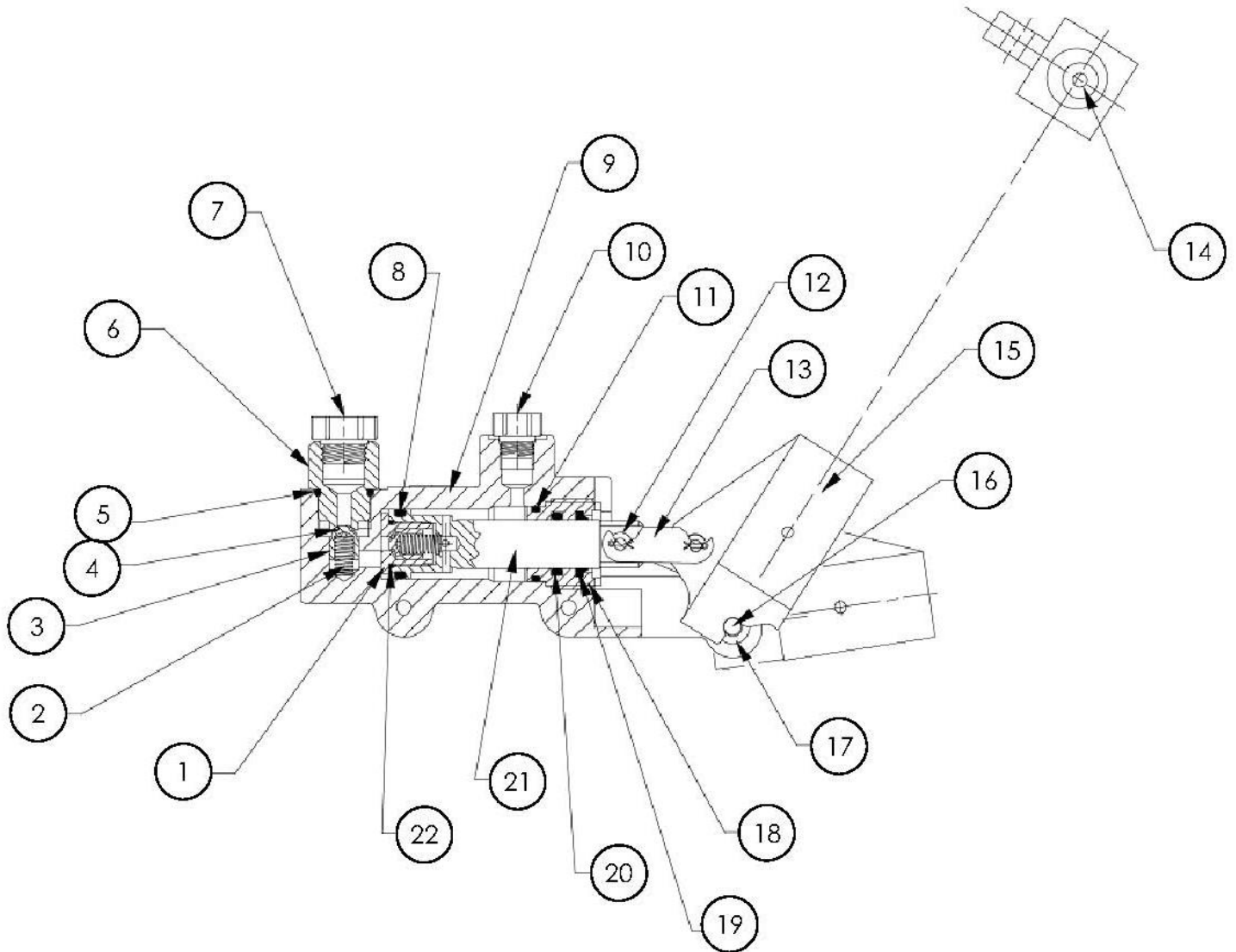
Parts List

When ordering replacement parts/kits, please specify model, serial number and color of your unit.

Item	Part Number	Description	Qty
	15F2968	Air Pump/Hydraulic Assembly (Optional); consists of:	
1	15L13489	Placard	1
2	15L13490	Placard, Hydraulic Oil	1
3	15L21761	Operate Ins. Placard	1
4	15F2733	Hose Assembly	1
5	15F2733	Hose Assembly	1
6	15F2168	Hose Assembly	1
7	15F1034	Hose Assembly	1
8	15O4446	Dual Acting Pump	1
9	15O3604	Cap Screw	2
10	15O298	Nylok Nut	2
11	15L25022	Pump Handle.	1
12	15O338	Roll Pin	1
13	15O2749	Filter	1
14	15O204	Washer	2
15	15O3057	Hex Bushing	1
16	15O2752	Square Head Plug	1
17	15O4468	90 Deg. M Swivel	1
18	15O4467	Swivel	1
19	15O5937	Check Valve	1
20	15O680	Swivel	1
21	15O2995	Needle Valve	1
22	15O3952	Male Tee	2
23	15O4000	Anchor	1
24	15O4949	Air/Hyd. Pump Spx	1
25	15O2080	Street Elbow	1
26	15O2057	Male Tee	1
27	15O2124	Close Nipple	1
28	15O3877	Bushing	1
29	15O1110	Male Swivel	1
30	15O5530	Check Valve	1
31	15O5529	Adapter Swivel Union	1
32	15O2587	Rigid Clamp	1
33	15O3323	Self Tapping Screw	2
34	15O2877	Pipe Plug	1
35	15O1997	Pipe Plug	1
36	15O1263	Pipe Plug	2
37	15O2199	Straight Swivel	1
38	15F1975	Hose Assembly	1

Parts List

When ordering replacement parts/kits, please specify model, serial number and color of your unit.



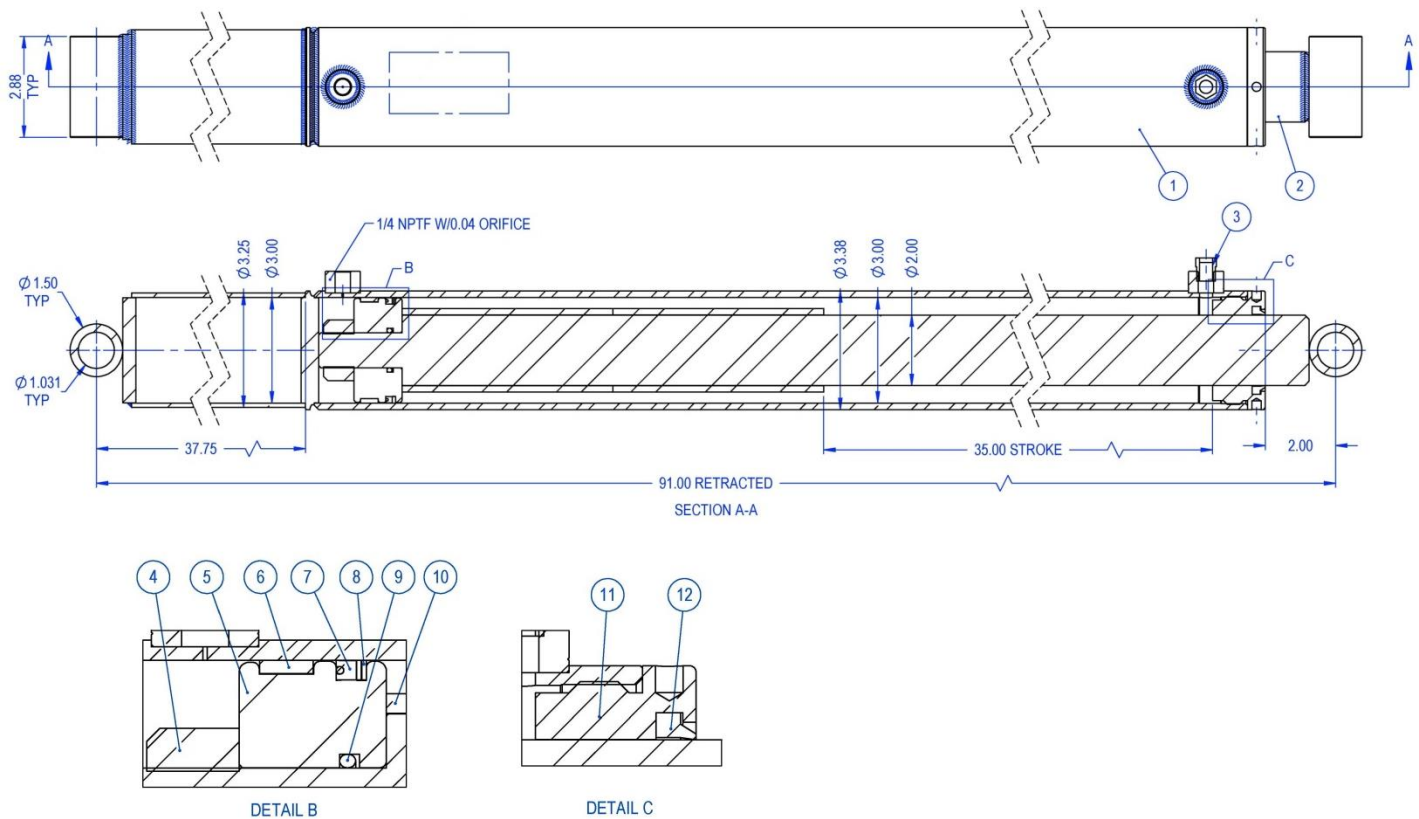
Parts List

When ordering replacement parts/kits, please specify model, serial number and color of your unit.

Item	Part Number	Description	Qty
	1504446	Hydraulic Pump Assembly ; consists of:	
1	1505619	Fitting, O-Ring Boss	1
2	1505620	Spring	2
3	1505621	Body Poppet	2
4	1505622	O-Ring	2
5	1505623	O-Ring	1
6	1505624	Fitting, Check Seat	1
7	1505625	Fitting, Orb Plug	1
8	1505626	O-Ring	1
9	1505627	Body, Dual Action Hand Pump	1
10	1505628	Fitting, Plug	1
11	1505629	O-Ring	1
12	1505617	Bushing, Bronze	2
13	1505618	Link, Double Pitch Chain	1
14	1505630	Screw, Set	1
15	1505631	Pivot, Handle	1
16	1505632	Pin, Hinge	1
17	1505633	Bushing, Bronze Shoulder	2
18	1505634	Nut, Gland	1
19	1505635	Wiper, Rod	1
20	1505636	O-Ring	1
21	1505637	Piston, Hand Pump	1
22	1505638	O-Ring	1

Parts List

When ordering replacement parts/kits, please specify model, serial number and color of your unit.



Item	Part Number	Description	Qty
	1506104	Cylinder Assembly ; consists of:	
1	1506130	Jack Subassembly	1
2	1506131	Rod Subassembly	1
3	1506132	Breather, Plug	1
4	1506133	Conical Top Lock Nut	1
5	1506134	Piston	1
6	1506135	Wear Ring	1
7	1506136	Polypak	1
8	1506137	Backup Ring	1
9	1506138	O-Ring	1
10	1506139	Stop Tube.	2
11	1506140	Gland Nut, Internal	1
12	1506141	Rod Wiper	1