

Models:
871000P / BC-500P
871100P / BC-400P
871200P / BC-300P
Brake Changer Cradle Assembly



01/2024 – Rev. 02

For Spare Parts, Operations & Service Manuals or Service Needs
Scan the QR code or visit Tronair.com/aftermarket



The Tronair Group of Companies: Tronair | DatcoMedia | Columbus Jack | Eagle | DAE | Malabar International

Malabar International

1 Air Cargo Pkwy East
Swanton, OH 43558

Phone: (419) 866-6301 | 800-426-6301

Web: www.malabar.com
Email: sales@malabar.com

REVISION	DATE	TEXT AFFECTED
01	12/2018	Original release
02	01/2024	Major revision

TABLE OF CONTENTS

PAGE

1.0	PRODUCT INFORMATION	4
1.1	DESCRIPTION.....	4
1.2	MODEL & SERIAL NUMBER.....	4
1.3	MANUFACTURER	4
1.4	SPECIFICATIONS	4
2.0	SAFETY INFORMATION.....	4
2.1	USAGE AND SAFETY INFORMATION	4
3.0	TRAINING	5
3.1	TRAINING REQUIREMENTS	5
3.2	TRAINING PROGRAM	5
3.3	OPERATOR TRAINING.....	5
4.0	PREPARATION PRIOR TO FIRST USE	5
5.0	OPERATION.....	5
6.0	PACKAGING AND STORAGE	5
7.0	MAINTENANCE.....	5
8.0	PROVISION OF SPARES.....	5
8.1	SOURCE OF SPARE PARTS.....	5
8.2	RECOMMENDED SPARE PARTS LISTS	5
9.0	IN SERVICE SUPPORT.....	5
10.0	GUARANTEES/LIMITATION OF LIABILITY	6

This product can not be modified without the written approval of Tronair, Inc. Any modifications done without written approval voids all warranties and releases Tronair, Inc., its suppliers, distributors, employees, or financial institutions from any liability from consequences that may occur. Only Tronair OEM replacement parts shall be used.



CAUTION!

Aircraft manufacturer's specifications and instructions must be followed. In the event of contradiction between aircraft manufacturer's specifications and Malabar's, aircraft manufacturer's will prevail.

1.0 PRODUCT INFORMATION

1.1 DESCRIPTION

This brake changer cradle is intended to be used with Malabar's 175 series of wheel and tire dollies to raise, lower, and hold a brake assembly for removal and installation to the aircraft. Always follow manufacturer's instructions for proper brake handling procedures.

1.2 MODEL & SERIAL NUMBER

Reference nameplate on unit

1.3 MANUFACTURER

TRONAIR, Inc. / Malabar
1 Air Cargo Pkwy East
Swanton, Ohio 43558 USA

Telephone: (419) 866-6301 or 800-426-6301
Fax: (419) 867-0634
E-mail: sales@malabar.com
Website: www.malabar.com

1.4 SPECIFICATIONS

	871000P BC-500P	871100P BC-400P	871200P BC-300P
Height	18.25 in (464 mm)	18.25 in (464 mm)	15.75 in (401 mm)
Width	37 in (940 mm)	37 in (940 mm)	31.75 in (807 mm)
Depth	16.25 in (413 mm)	14 in (356 mm)	14 in (356 mm)
Cradle Radius	9.25 in (235 mm)	9.25 in (235 mm)	7.5 in (191 mm)
Cradle Width	16 in (407 mm)	10 in (254 mm)	10 in (254 mm)
Weight	48 lbs (22 kg)	40 lbs (18 kg)	35 lbs (16 kg)
Working Load Limit	600 lbs (272 kg)	600 lbs (272 kg)	600 lbs (272 kg)

2.0 SAFETY INFORMATION

2.1 USAGE AND SAFETY INFORMATION

To ensure safe operations please read the following statements and understand their meaning. Also refer to your equipment manufacturer's manual for other important safety information. This manual contains safety precautions which are explained below. Please read carefully.



WARNING!

Warning is used to indicate the presence of a hazard that can cause **severe personal injury, death, and/or substantial property damage** if the Warning Notice is ignored.



CAUTION!

Caution is used to indicate the presence of a hazard, which will or can cause **minor personal injury or property damage** if the Caution Notice is ignored.

3.0 TRAINING

3.1 TRAINING REQUIREMENTS

The employer of the operator is responsible for providing a training program sufficient for the safe operation of the unit.

3.2 TRAINING PROGRAM

The employer provided operator training program should cover safety procedures concerning use of the unit in and around the intended aircraft at the intended aircraft servicing location.

3.3 OPERATOR TRAINING

The operator training should provide the required training for safe operation of the unit.

NOTE: Maintenance and Trouble Shooting are to be performed by a skilled and trained technician.

4.0 PREPARATION PRIOR TO FIRST USE

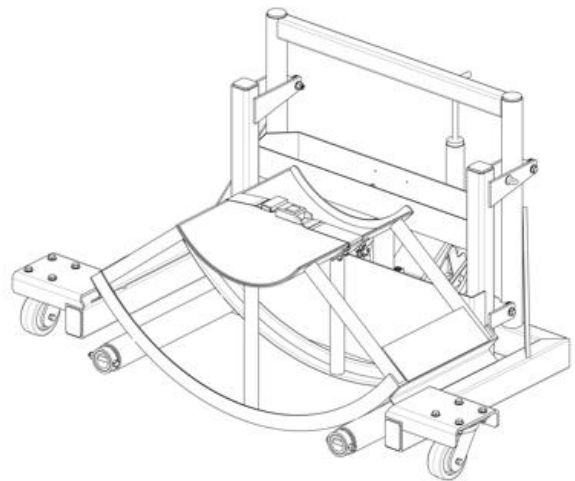
Brake changer cradles are shipped complete and ready to use.

5.0 OPERATION

Inspect cradle before every use. Do not use if the strap is damaged, torn, or missing. Do not use if the weldment is visibly damaged.

Ensure that the brake cradle is located against the mast of the dolly while on the dolly.

Follow manufacturer's instructions for proper brake handling procedures.



WARNING!

Always use the included strap to secure the brake while a brake is in the brake changer cradle. Failure to do so may result in crush injuries and/or damage to brake and surrounding equipment.

6.0 PACKAGING AND STORAGE

When not in use, store in clean, dry area.

7.0 MAINTENANCE

Cradle should be inspected regularly for damage. Damaged or missing parts must be replaced before use.

Cradle should be inspected yearly for rust and structural damage. Repair and repaint as required.

If at any point the cradle has experienced major damage and/or repair, it shall be proof tested using static 1,200 lbs to verify structural integrity.

8.0 PROVISION OF SPARES

8.1 SOURCE OF SPARE PARTS

Spare parts may be obtained from the manufacturer:

TRONAIR, Inc. / Malabar
1 Air Cargo Pkwy East
Swanton, Ohio 43558 USA

Telephone: (419) 866-6301 or 800-426-6301
Fax: (419) 867-0634
E-mail: sales@malabar.com
Website: www.malabar.com

For Spare Parts, Operations & Service Manuals or Service Needs:
Scan the QR code or visit Tronair.com/aftermarket



8.2 RECOMMENDED SPARE PARTS LISTS

Reference the following page(s) for Replacement Parts and Kits available.

9.0 IN SERVICE SUPPORT

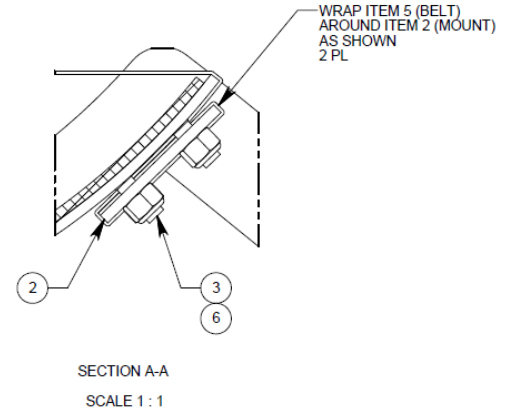
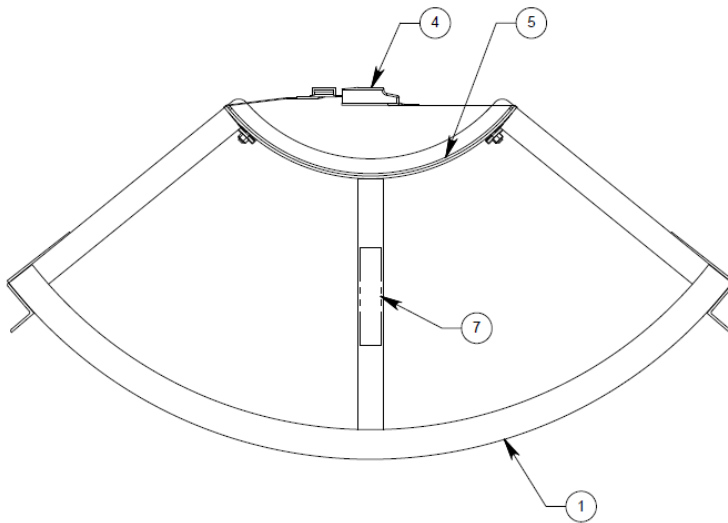
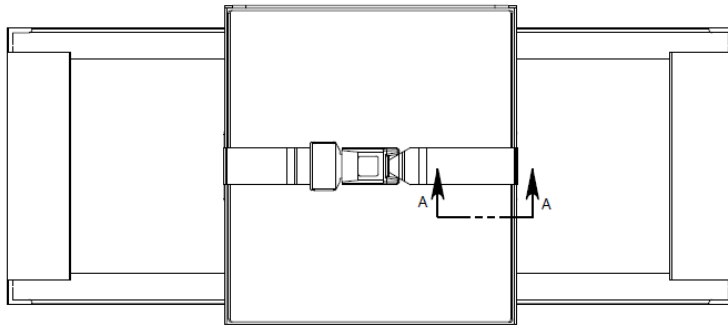
Contact Tronair, Inc. for technical services and information. See Section 1.3 – Manufacturer.

10.0 GUARANTEES/LIMITATION OF LIABILITY

- I. Seller warrants each new product of its manufacture to be free from defects in material or workmanship, under proper, reasonable, and normal use and service.
- II. The warranty period shall be as follows:
 - A. For Malabar equipment, with the exception of Tripod Jacks, the warranty period is one (1) year after date of shipment.
 - B. For Malabar Tripod Jacks, the warranty period is three (3) years after date of shipment.
- III. Where Buyer claims an alleged defect in material or workmanship and so advises Seller in writing within ten (10) days after discovery thereof, then and in such event, Buyer shall return said equipment, transportation prepaid, to the Seller, provided such return is timely and within the above-mentioned warranty period. This warranty and liability of the Seller is expressly limited solely to replacement or repair of defective parts or goods, and return at Buyer's expense to Buyer after finding by Seller the product was defective prior to original shipment or, at the option of Seller, to providing refund to Buyer of the purchase price for said product.
- IV. It is further expressly understood and agreed that:
 - A. THERE IS NO WARRANTY, REPRESENTATION OF CONDITION OF ANY KIND, EXPRESS OR IMPLIED, (INCLUDING NO WARRANTY OF MERCHANTABILITY OR OF FITNESS) EXCEPT THAT THE MATERIAL SHALL BE OF THE QUALITY SPECIFIED IN APPLICABLE SPECIFICATIONS, AND NONE SHALL BE IMPLIED BY LAW. Except as otherwise provided herein, quality shall be in accordance with Seller's specifications. Final determination of the material for the use contemplated by Buyer is the sole responsibility of Buyer and Seller shall have no responsibility in connection with such suitability, and
 - B. Buyer's sole and exclusive remedy shall be repair or replacement of defective parts or goods by the Seller. Should the goods, in the judgment of Seller, preclude the remedying of the warranted defects by repair or replacement, the Buyer's sole and exclusive remedy shall be the refund of the purchase price, and
 - C. Seller shall not be liable for prospective profits or special, indirect or consequential damages, nor shall any recovery of any kind against Seller be greater in amount than the purchase price of the specific material sold and causing the alleged loss, damage or injury. Buyer assumes all risk and liability for loss, damage or injury to persons or property of Buyer or others arising out of use or possession of any product or part sold hereunder, and
 - D. Seller shall in no way be deemed or held to be obligated, liable or accountable upon or for any guarantees or warranties, express or implied, or created by statute or by operation of law or otherwise, in any manner of form beyond its express agreement above set forth, and
 - E. No warranty herein shall apply to any product which shall have been repaired or altered, unless such alteration or repair has been made by Seller or if, after return to and inspection by Seller, the product is found by Seller to have been subject to misuse, negligence or accident, and
 - F. No warranty of any nature is made by Seller as to any component forming a part of the product sold and Buyer shall receive only such warranties offered by such other manufacturer of such component, and
 - G. Seller does not assume nor does Seller authorize any other person to assume for it any other liability or make any warranty in connection with the sale of its products.

Parts List

When ordering replacement parts/kits, please specify model, serial number and color of your unit.



	871000P BC-500P	871100P BC-400P	871200P BC-300P		
Item	Part Number	Part Number	Part Number	Description	Qty
1				BRAKE CHANGER CRADLE WELDMENT	REF
2	871020	871020	871020	MOUNT	2
3	325-016	325-016	325-016	FHSCS, 82°, ¼-20 X ¾ LG	8
4	491-049	491-049	491-049	SAFETY BELT	1
5	871025	871125	871225	SADDLE PAD	1
6	353-001	353-001	353-001	HEX LOCKNUT, ¼-20	8
7	871213-6	871213-5	871213-4	STICKER	1