

Model: 8784B
E-Z Load Service Trailer

11/2023 – Rev. 02

For Spare Parts, Operations & Service Manuals or Service Needs
Scan the QR code or visit Tronair.com/aftermarket



REVISION	DATE	TEXT AFFECTED
01	12/2018	Original release
02	11/2023	Modified Figure 10 Parts List

TABLE OF CONTENTS

PAGE

1.0	PRODUCT INFORMATION	4
1.1	DESCRIPTION.....	4
1.2	MODEL & SERIAL NUMBER.....	4
1.3	MANUFACTURER.....	4
1.4	SPECIFICATIONS	4
2.0	SAFETY INFORMATION.....	4
2.1	USAGE AND SAFETY INFORMATION	4
3.0	PREPARATION PRIOR TO FIRST USE	4
4.0	TRAINING	5
4.1	TRAINING REQUIREMENTS	5
4.2	TRAINING PROGRAM	5
4.3	OPERATOR TRAINING	5
5.0	OPERATION.....	5
5.1	EMERGENCY TRAILER MOBILIZATION.....	5
6.0	MAINTENANCE.....	6
6.1	SERVICING	6
6.2	DISASSEMBLY INSTRUCTIONS.....	6
6.3	REPAIR AND REPLACEMENT	6
7.0	PROVISION OF SPARES.....	6
7.1	SOURCE OF SPARE PARTS.....	6
7.2	RECOMMENDED SPARE PARTS LISTS	6
8.0	IN SERVICE SUPPORT.....	7
9.0	GUARANTEES/LIMITATION OF LIABILITY	7

This product can not be modified without the written approval of Tronair, Inc. Any modifications done without written approval voids all warranties and releases Tronair, Inc., its suppliers, distributors, employees, or financial institutions from any liability from consequences that may occur. Only Tronair OEM replacement parts shall be used.



CAUTION!

Aircraft manufacturer's specifications and instructions must be followed. In the event of contradiction between aircraft manufacturer's specifications and Malabar's, aircraft manufacturer's will prevail.

1.0 PRODUCT INFORMATION

1.1 DESCRIPTION

The Malabar Model 8784B is a trailer designed for transporting aircraft tires, axle jack, wheel brake changer and brake cradle. This trailer raises and lowers via nitrogen supplied lift actuators for easy loading and unloading of tires and equipment. There is a tow pintle rated for 200 pounds tongue load and 2000 pounds tow load which can be used for extra towing. The unit is equipped with tow handle & integral front wheel parking brake, four 21 inch diameter poly filled tires, tool box, control panel air inlet, three lift actuators and the following optional equipment:

- Two extra pintle hooks
- Panel cover kit
- Side chain kit
- Tire service kit
- Tire service kit with hose reel
- 3600 psig nitrogen bottle with CGA680 valve

The trailer is designed to handle either 3600 psig or 2400 psig nitrogen bottles. The trailer comes equipped with interface fittings for 3600 psig bottles with CGA680 valves. If nitrogen bottles with CGA580 valves are employed, CGA580 trailer interface fittings (nut part no. 719-041 and nipple part no. 719-039) are available for purchase from Malabar.

1.2 MODEL & SERIAL NUMBER

Reference nameplate on unit

1.3 MANUFACTURER

TRONAIR / Malabar International
1 Air Cargo Pkwy East
Swanton, Ohio 43558 USA

Telephone: (419) 866-6301 or 800-426-6301
E-mail: sales@malabar.com
Website: www.malabar.com
Website: www.tronair.com

1.4 SPECIFICATIONS

Maximum Aircraft Tire Size 56 in (1422 mm)
3600 psig Nitrogen Bottle Approx. Raise/Lower Cycles 80
Unit Weight (empty) 1560 lbs (708 kg)
Unit Gross Weight (fully loaded) 3770 lbs (1710 kg)
Maximum Towing Speed 20 mph (32 kph)
Standard Finish Yellow Skydrol resistant paint

2.0 SAFETY INFORMATION

2.1 USAGE AND SAFETY INFORMATION

To insure safe operations please read the following statements and understand their meaning. Also refer to your equipment manufacturer's manual for other important safety information. This manual contains safety precautions which are explained below. Please read carefully.



WARNING!

Warning is used to indicate the presence of a hazard that can cause **severe personal injury, death, and/or substantial property damage** if the Warning Notice is ignored.



CAUTION!

Caution is used to indicate the presence of a hazard, which will or can cause **minor personal injury or property damage** if the Caution Notice is ignored.

3.0 PREPARATION PRIOR TO FIRST USE

The unit is shipped fully assembled and ready to use.

4.0 TRAINING

4.1 TRAINING REQUIREMENTS

The employer of the operator is responsible for providing a training program sufficient for the safe operation of the unit.

4.2 TRAINING PROGRAM

The employer provided operator training program should cover safety procedures concerning use of the unit in and around the intended aircraft at the intended aircraft servicing location.

4.3 OPERATOR TRAINING

The operator training should provide the required training for safe operation of the unit.

NOTE: Maintenance and Trouble Shooting are to be performed by a skilled and trained technician.

5.0 OPERATION

1. To load nitrogen bottle:
 - a. Clamp bottle in place using bottle clamps.
 - b. Make sure latches are adjusted properly for positive clamping action.



CAUTION!

Shutoff valve on nitrogen bottle must be closed when not in use or when making hose connection.

- c. Attach nitrogen tailpiece hose assembly to bottle.



CAUTION!

Nitrogen regulator is factory set at 95-100 psig. DO NOT change factory setting. It is possible to over pressurize the pneumatic system which could cause equipment failure and possible bodily injury.

2. To raise trailer:
 - a. Open nitrogen bottle shutoff valve or connect air hose (100 psig) to air inlet on control panel.



CAUTION!

Air relief valve (125 psig) must be installed at all times. If air relief valve is removed, it is possible to over pressurize the pneumatic system which could cause equipment failure and possible bodily injury.

- b. Secure load prior to lift/transport. Two straps and bungee cord are recommended for axle jacks, two straps are recommended for wheel brake changer and either one strap or two connected straps are recommended for each tire (see figures 1, 2 & 3).
 - c. Check area and keep personnel clear of trailer bed during raising.
 - d. Move control panel hand lever to "raise trailer bed/transport" position.
 - e. After the trailer fully raises, it is ready for transport.
3. To lower trailer:
 - a. Position front wheels forward straight ahead and raise tow handle to vertical position to engage parking brake.
 - b. Check area and keep personnel clear of trailer bed during lowering.
 - c. Move control panel hand lever to "lower trailer bed" position.
 - d. Shut nitrogen bottle shutoff valve/disconnect shop air hose from air inlet on control panel.

Note: The control panel hand lever can be moved to "emergency stop" position at any time to stop the trailer bed from raising or lowering.

5.1 EMERGENCY TRAILER MOBILIZATION

When necessary to move trailer due to airstroke actuator or pneumatic failure (see figure 12):

1. Use a forklift or overhead crane capable of lifting 3 tons to raise trailer off ground.
2. Insert wooden blocks between running gear and frame.
3. Lower trailer and cautiously move to desired location.

6.0 MAINTENANCE

6.1 SERVICING

Servicing the unit consists primarily of the following:

1. Grease tow handle, wheels and all pivot parts.

6.2 DISASSEMBLY INSTRUCTIONS

When necessary to disassemble the unit, carefully inspect the following:

1. Check for corrosion, wear and condition of lift actuators and running gear.
2. Inspect condition of all hoses and tubes.
3. Check frame structure for damage.
4. Check regulator, valve and all fittings.

6.3 REPAIR AND REPLACEMENT

No definite time schedule can be established for the overhaul of the unit for replacement of the various moving parts. The number of times the unit is used materially affects the life of the working parts. Each time the unit is disassembled, carefully repair or replace the following:

1. Replace all defective parts and missing parts.
2. Clean metal parts with cleaning solvent and dry with compressed air.
3. Lubricate all threads and bearings.

7.0 PROVISION OF SPARES

7.1 SOURCE OF SPARE PARTS

Spare parts may be obtained from the manufacturer:

TRONAIR / Malabar International	Telephone: (419) 866-6301 or 800-426-6301
1 Air Cargo Pkwy East	E-mail: sales@malabar.com
Swanton, Ohio 43558 USA	Website: www.malabar.com
	Website: www.tronair.com

7.2 RECOMMENDED SPARE PARTS LISTS

Reference the following page(s) for Replacement Parts and Kits available.

The following spare parts are recommended and available upon request.

Part Number	Description	Qty
878460	Front running gear assembly	1
878402	Hub & wheel assembly	4
492-191	Poly filled tire & wheel	4
877685-21	Tailpeice	1
426-032	Airstroke	3
473-092	High pressure	1
482-009	High pressure gauge	1
482-050	Low pressure	1
424-048	Air valve	1
425-011	Air relief valve	1
878426	Placard, instruction	1
55997-2	Nameplate	1
55998	Sticker, Malabar	2
75939	Sticker, towing	1
878445	Sticker, secure load	6
878446	Sticker, feet clear	10

8.0 IN SERVICE SUPPORT

Contact Malabar, Inc. for technical services and information. See Section 1.3 – Manufacturer.

9.0 GUARANTEES/LIMITATION OF LIABILITY

- I. Seller warrants each new product of its manufacture to be free from defects in material or workmanship, under proper, reasonable, and normal use and service.
- II. The warranty period shall be as follows:
 - A. For Malabar equipment, with the exception of Tripod Jacks, the warranty period is one (1) year after date of shipment.
 - B. For Malabar Tripod Jacks, the warranty period is three (3) years after date of shipment.
- III. Where Buyer claims an alleged defect in material or workmanship and so advises Seller in writing within ten (10) days after discovery thereof, then and in such event, Buyer shall return said equipment, transportation prepaid, to the Seller, provided such return is timely and within the above-mentioned warranty period. This warranty and liability of the Seller is expressly limited solely to replacement or repair of defective parts or goods, and return at Buyer's expense to Buyer after finding by Seller the product was defective prior to original shipment or, at the option of Seller, to providing refund to Buyer of the purchase price for said product.
- IV. It is further expressly understood and agreed that:
 - A. THERE IS NO WARRANTY, REPRESENTATION OF CONDITION OF ANY KIND, EXPRESS OR IMPLIED, (INCLUDING NO WARRANTY OF MERCHANTABILITY OR OF FITNESS) EXCEPT THAT THE MATERIAL SHALL BE OF THE QUALITY SPECIFIED IN APPLICABLE SPECIFICATIONS, AND NONE SHALL BE IMPLIED BY LAW. Except as otherwise provided herein, quality shall be in accordance with Seller's specifications. Final determination of the material for the use contemplated by Buyer is the sole responsibility of Buyer and Seller shall have no responsibility in connection with such suitability, and
 - B. Buyer's sole and exclusive remedy shall be repair or replacement of defective parts or goods by the Seller. Should the goods, in the judgment of Seller, preclude the remedying of the warranted defects by repair or replacement, the Buyer's sole and exclusive remedy shall be the refund of the purchase price, and
 - C. Seller shall not be liable for prospective profits or special, indirect or consequential damages, nor shall any recovery of any kind against Seller be greater in amount than the purchase price of the specific material sold and causing the alleged loss, damage or injury. Buyer assumes all risk and liability for loss, damage or injury to persons or property of Buyer or others arising out of use or possession of any product or part sold hereunder, and
 - D. Seller shall in no way be deemed or held to be obligated, liable or accountable upon or for any guarantees or warranties, express or implied, or created by statute or by operation of law or otherwise, in any manner of form beyond its express agreement above set forth, and
 - E. No warranty herein shall apply to any product which shall have been repaired or altered, unless such alteration or repair has been made by Seller or if, after return to and inspection by Seller, the product is found by Seller to have been subject to misuse, negligence or accident, and
 - F. No warranty of any nature is made by Seller as to any component forming a part of the product sold and Buyer shall receive only such warranties offered by such other manufacturer of such component, and
 - G. Seller does not assume nor does Seller authorize any other person to assume for it any other liability or make any warranty in connection with the sale of its products.

Figure 1

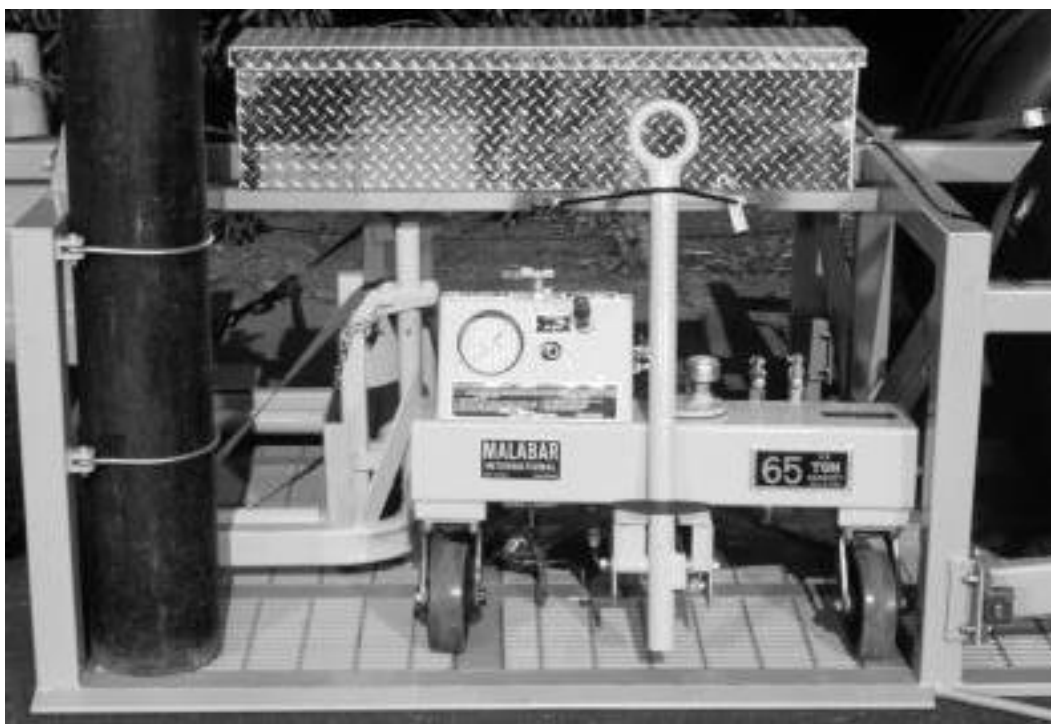


Figure 2

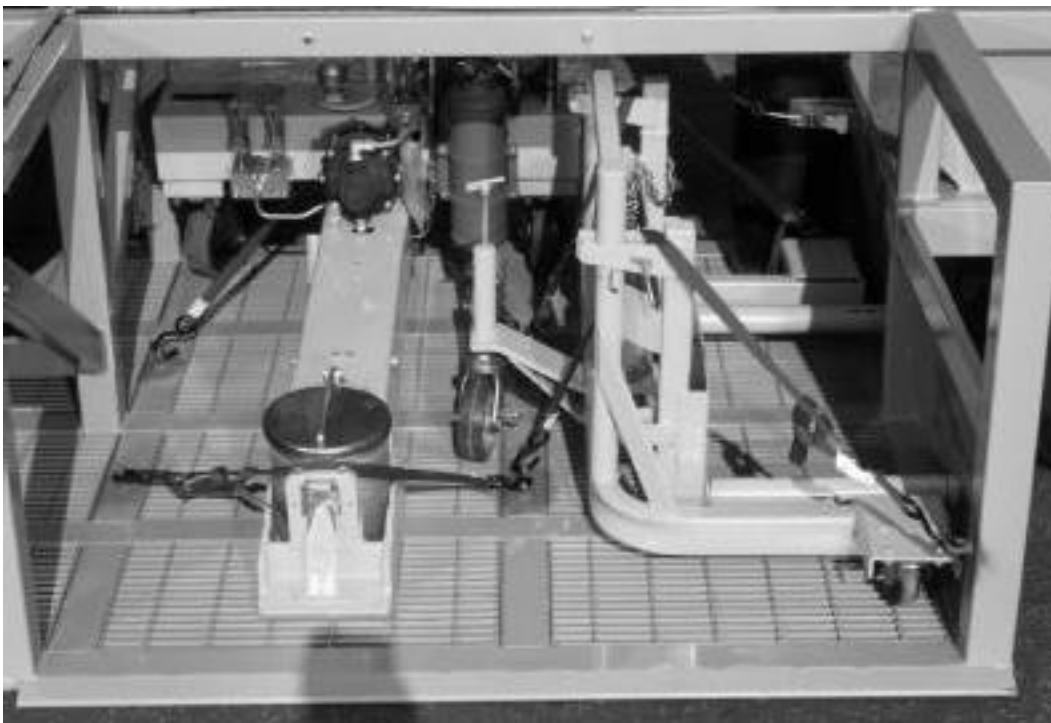
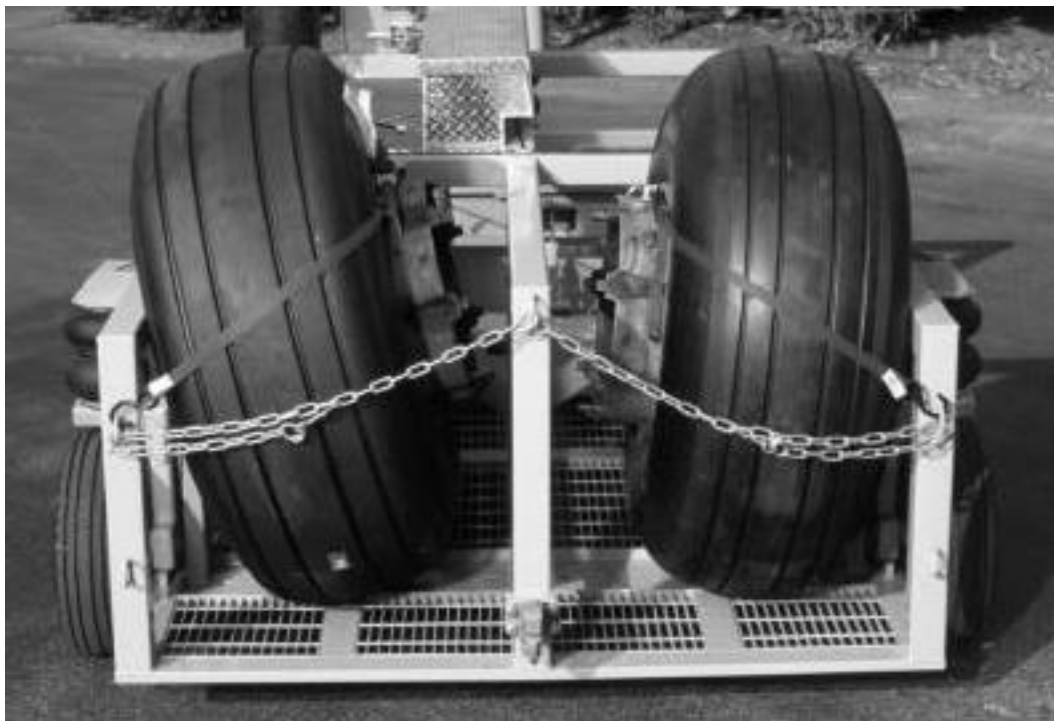
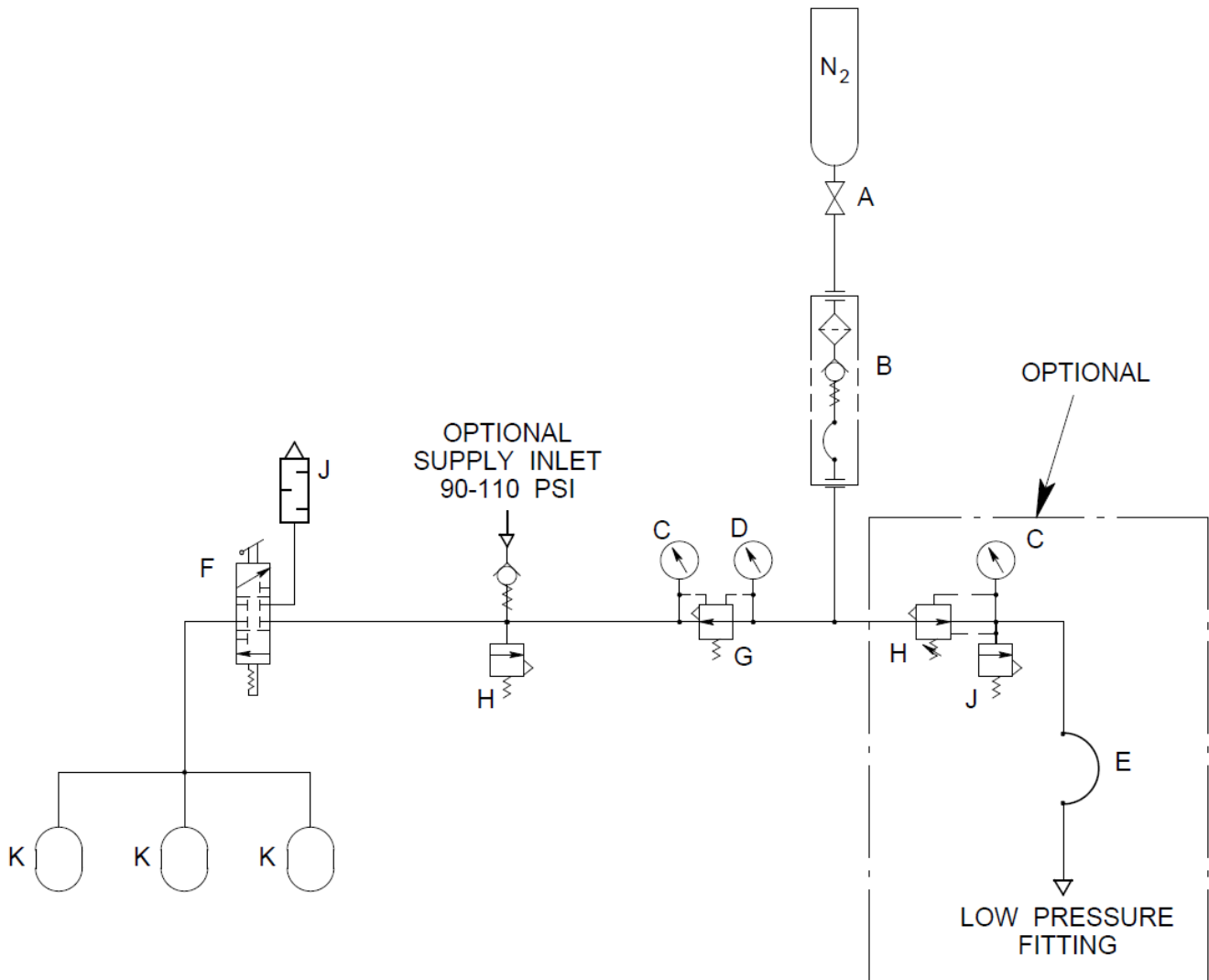


Figure 3



Pneumatic / Hydraulic Diagram



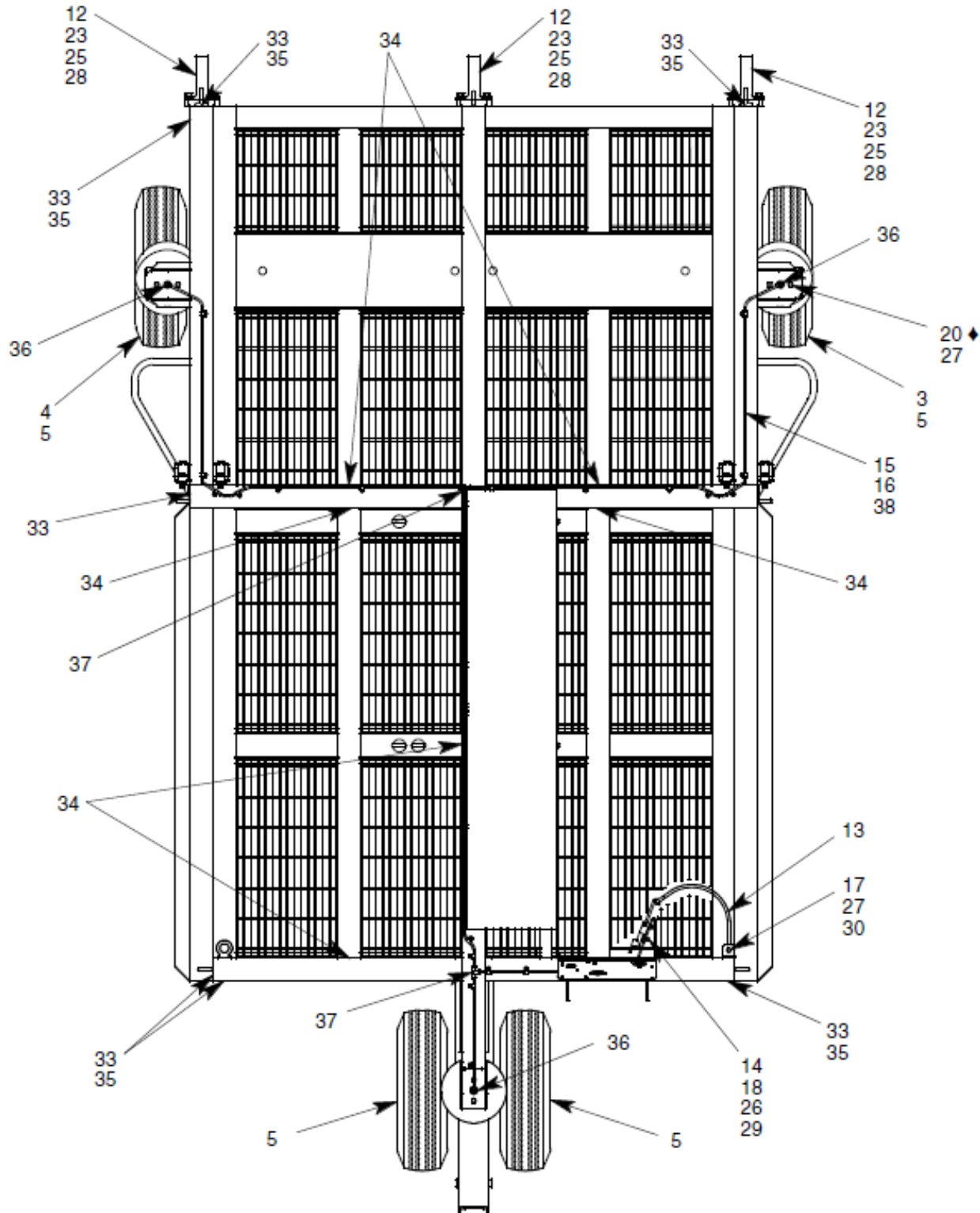
- A - SHUTOFF VALVE
- B - GN2 TAILPIECE HOSE ASSEMBLY
- C - LOW PRESSURE GAUGE
- D - HIGH PRESSURE GAUGE
- E - LOW PRESSURE SERVICE HOSE

- F - DIRECTIONAL CONTROL VALVE
- G - LOW PRESSURE NITROGEN REGULATOR
- H - PRESSURE RELIEF VALVE
- J - EXHAUST SILENCER
- K - AIRSTROKE ACTUATOR

Parts List – Figure 4A

When ordering replacement parts/kits, please specify model, serial number and color of your unit.

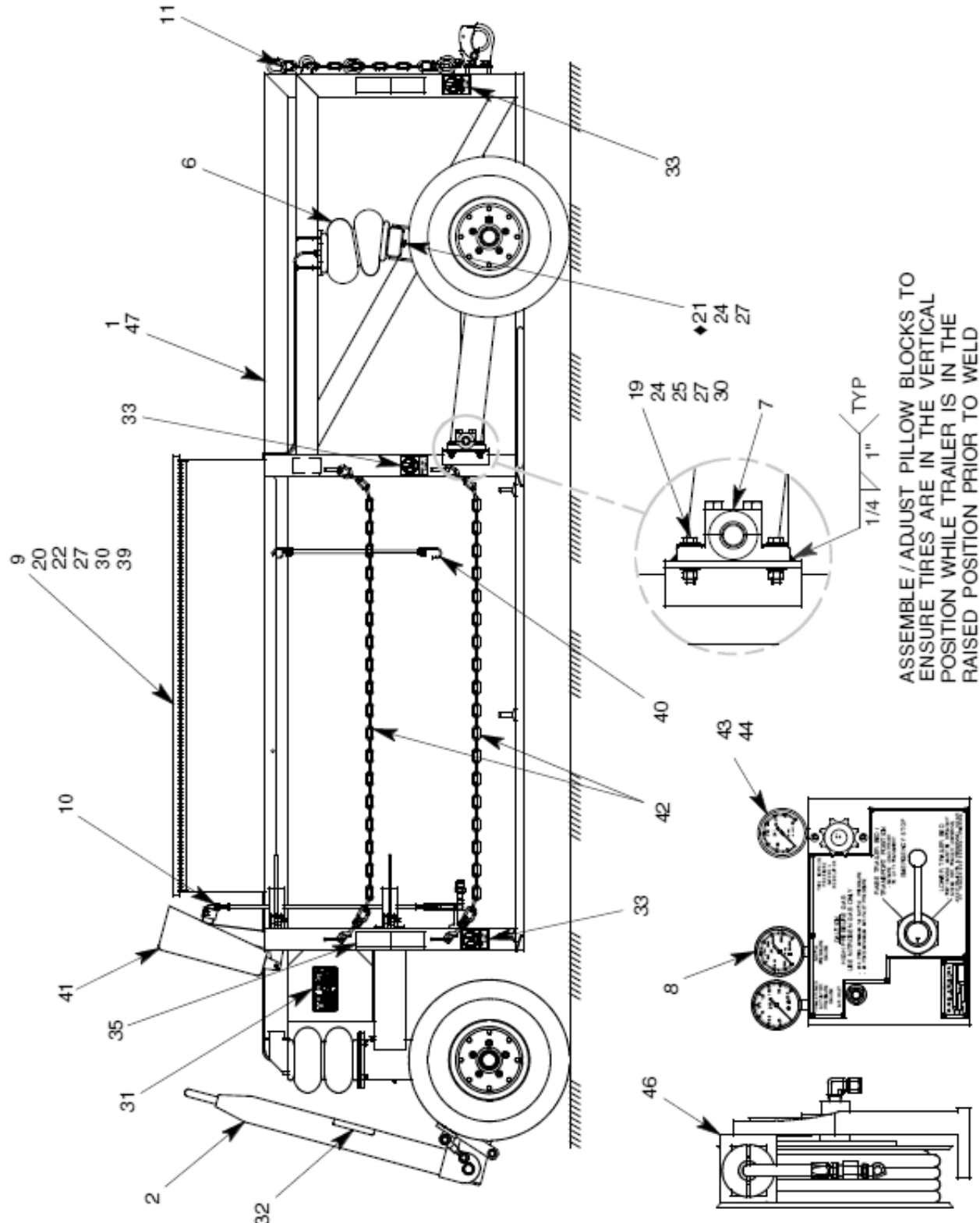
◆ TORQUE TO 15-20 FT LBS



Parts List – Figure 4B

When ordering replacement parts/kits, please specify model, serial number and color of your unit.

◆ TORQUE TO 15-20 FT LBS



Parts List – Figure 4A – 4B

When ordering replacement parts/kits, please specify model, serial number and color of your unit.

Item	Part Number	Description	Qty
1	878401	TRAILER	1
2	878460	FRONT RUNNING GEAR ASSY	1
3	878410R	SWING ARM	1
4	878410L	SWING ARM	1
5	878402	HUB AND WHEEL ASSY	4
6	426-032	AIRSTROKE ACTUATOR	2
7	410-015	MOUNTED PLAIN BEARING	4
8	878430	CONTROL PANEL ASSY	1
9	878480	STORAGE BOX	1
10	837695-3	TAILPIECE HOSE ASSY	1
11	878435	SAFETY CHAIN ASSY	1
12	499-046	PINTLE HOOK	3
13	878428	BOTTLE KEEPER	2
14	491-070	ADJUSTABLE DRAW LATCH	2
15	394-053	TUBE CLAMP	23
16	397-017	SELF TAPPING SCREW, 10-24	23
17	330-001	SHOULDER SCREW, 3/8-16	2
18	321-036	HHCS, 1/4-20 x 3/4 LG	4
19	321-246	HHCS, GR 5, 3/8-16 x 1 3/4 LG	8
20	321-011	HHCS, 3/8-16 x 1" LG	7
21	321-233	HHCS, 3/8-16 x 2 3/4 LG	4
22	321-053	HHCS, 3/8-16 x 4" LG	3
23	321-247	HHCS, GR 5, 1/2-13 x 1 1/4 LG	12
24	362-003	FLAT WASHER, 3/8 SAE	20
25	362-005	FLAT WASHER, 1/2 SAE	20
26	363-001	SPLIT LOCKWASHER, 1/4	4
27	363-003	SPLIT LOCKWASHER, 3/8	24
28	363-004	SPLIT LOCKWASHER, 1/2	12
29	351-001	HEX NUT, 1/4-20	4
30	351-002	HEX NUT, 3/8-16	16
31	55998	STICKER, MALABAR	2
32	75939	STICKER, TOWING	1
33	878446	STICKER, FEET CLEAR	10
34	878445	STICKER, SECURE LOAD	6
35	499-054	REFLECTIVE TAPE	AR
36	790-004	CONNECTOR, 1/4 T x 1/4 MPT	3
37	790-006	TEE, 1/4 T	2
38	999-018	TUBE, BLACK NYLON, 1/4 OD	AR
39	491-066	TIE STRAP (PAIR)	4
40	491-073	BUNGEE CORD	1
41	878484	PANEL COVER KIT	1
42	878490	SIDE CHAIN KIT	1
43	717-006	PLUG, 1/4 MPT	1
44	878440	TIRE SERVICE KIT	1
45	474-006	3600 PSI GN2 BOTTLE & VALVE	1
46	878450	TIRE SERVICE KIT w/HOSE RL	1
47	878405	TRAILER WLDMT FOR HOSE RL	1

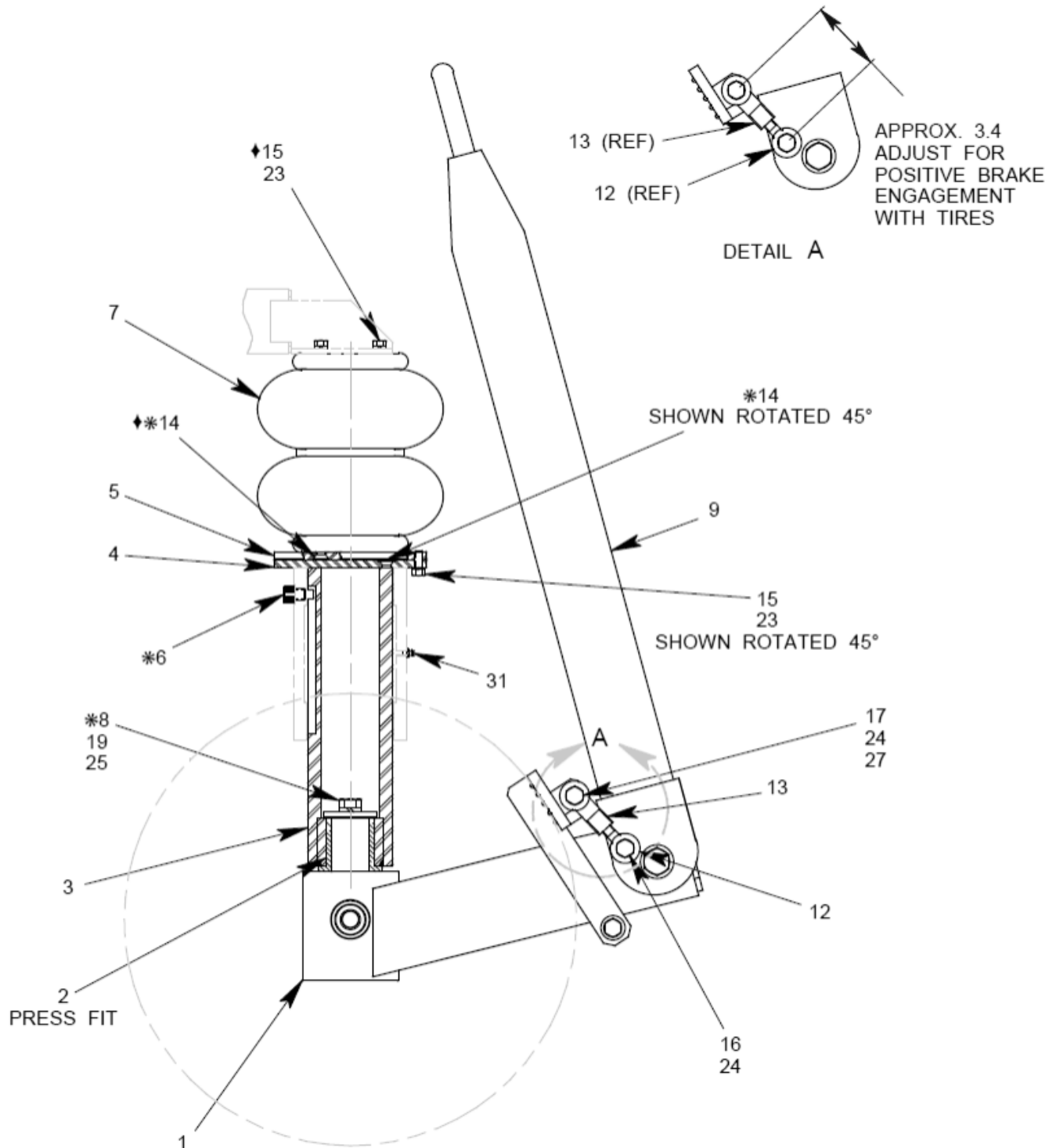
This page left blank intentionally.

Parts List – Figure 5A

When ordering replacement parts/kits, please specify model, serial number and color of your unit.

◆ TORQUE TO 15-20 FT LBS

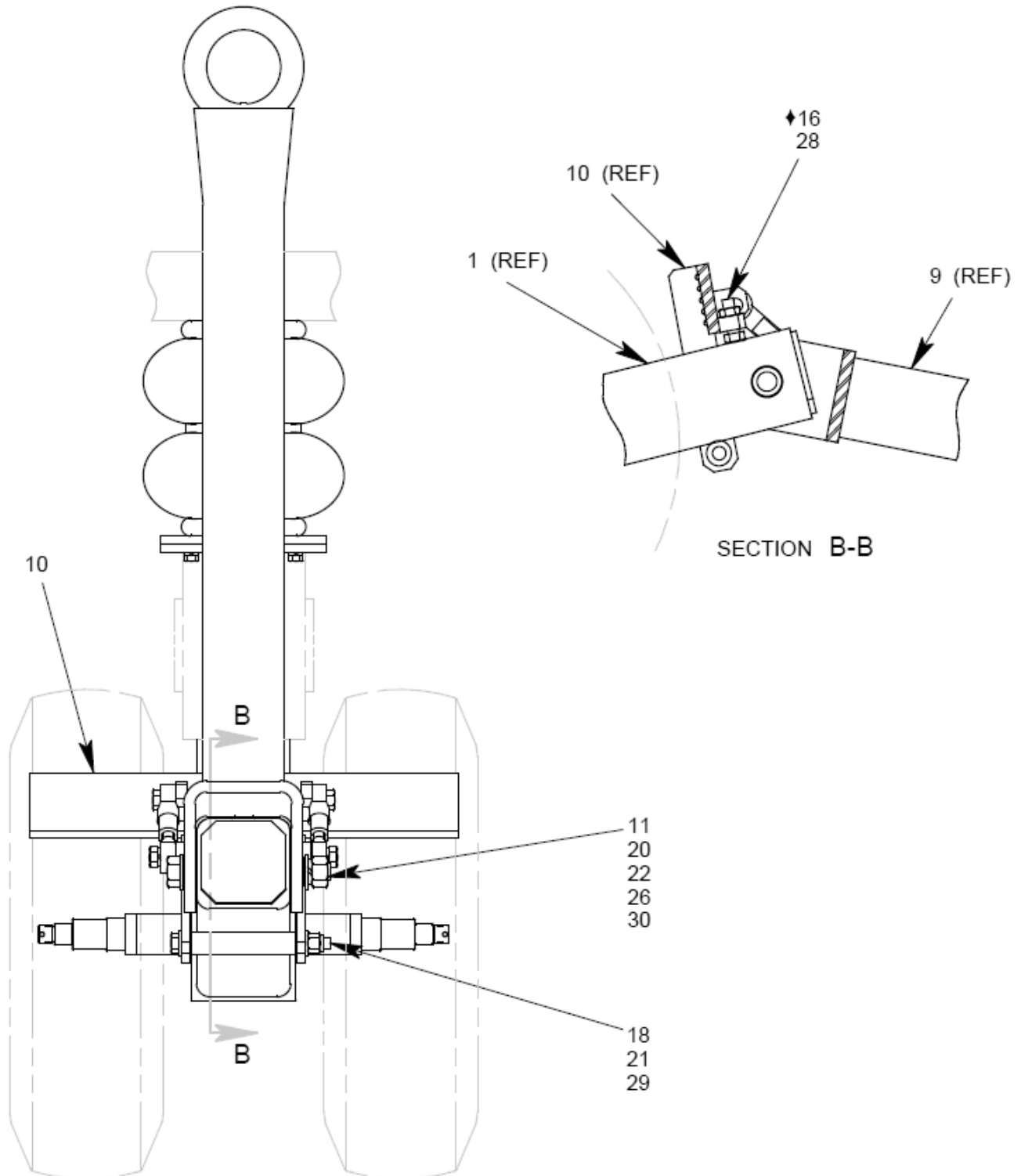
* USE LOCTITE THREAD LOCKER NO. 242



Parts List – Figure 5B

When ordering replacement parts/kits, please specify model, serial number and color of your unit.

- ◆ RAISE TOW ANDLE 4 – 6 in (10.16 – 1524 cm) OFF GROUND.
ADJUST SCREW AND JAM NUT TO MAINTAINING HEIGHT



Parts List – Figure 5A & 5B

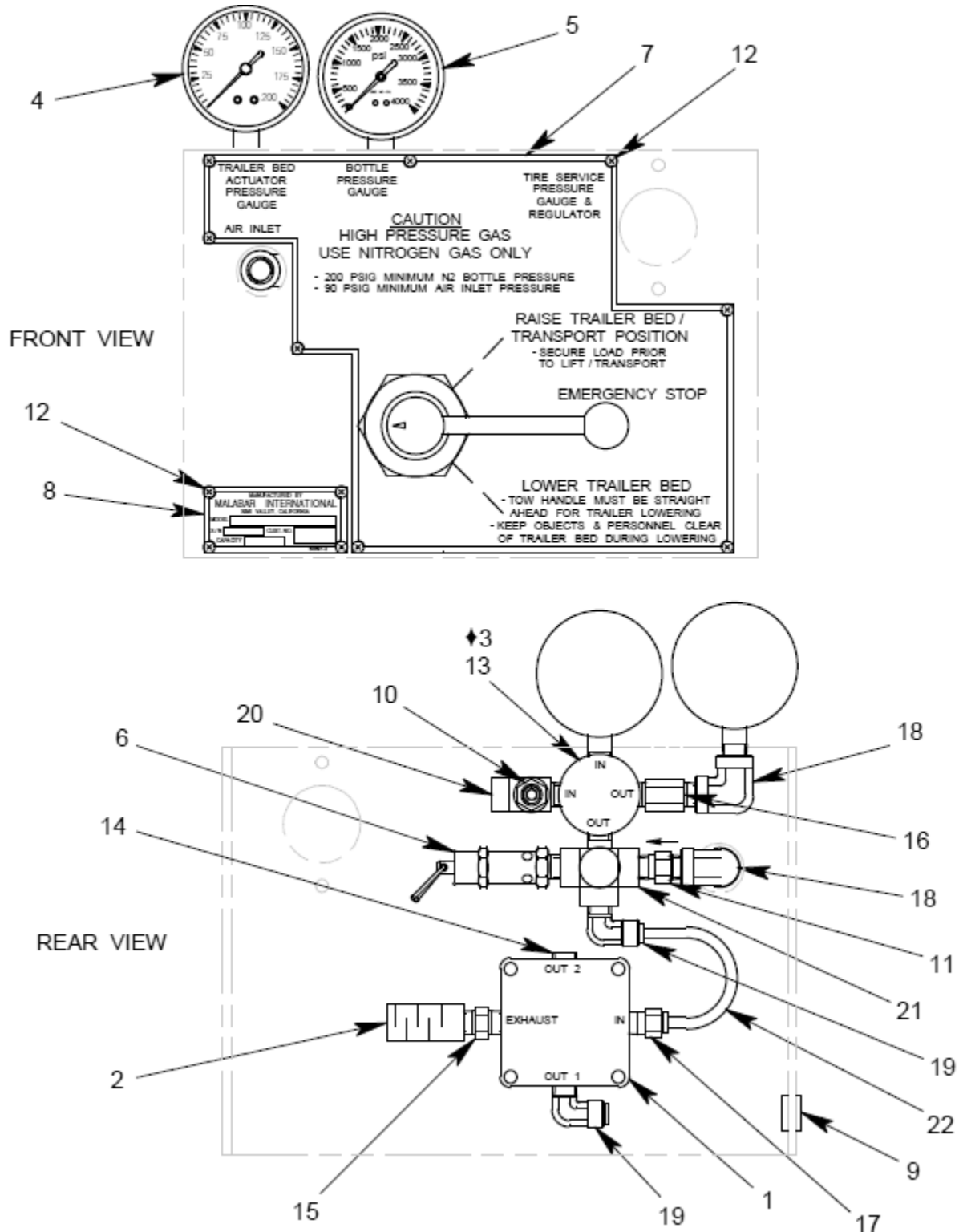
When ordering replacement parts/kits, please specify model, serial number and color of your unit.

Item	Part Number	Description	Qty
	878460	RUNNING GEAR ASSEMBLY; consist of:	
1	878415	AXLE HOUSING	1
2	410-014	FLANGED BEARING	1
3	878472	PISTON	1
4	878475	PISTON FLANGE	1
5	878476	ACTUATOR FLANGE	1
6	882465	RETAINING SCREW	1
7	426-032	AIRSTROKE ACTUATOR	1
8	878471	WASHER	1
9	878466	TOW HANDLE	1
10	878461	BRAKE	1
11	878419	TOW HANDLE PIVOT TUBE	1
12	390-044	BALL JOINT, 1/2-20UNF-2A	2
13	390-043	BALL JOINT, 1/2-20UNF-2B	2
14	325-009	FHSCS, 82°, 3/8-16 x 1" LG	6
15	321-056	HHCS, 3/8-16 x 7/8 LG	6
16	321-014	HHCS, 1/2-13 x 1 1/2 LG	3
17	321-005	HHCS, 1/2-13 x 2" LG	2
18	321-109	HHCS, 1/2-13 x 6 1/2 LG	1
19	321-108	HHCS, 5/8-11 x 1 1/2 LG	1
20	321-192	HHCS, 3/4-10 x 6 1/2 LG	1
21	362-005	FLAT WASHER, 1/2 SAE	2
22	362-007	FLAT WASHER, 3/4 SAE	2
23	363-003	SPLIT LOCKWASHER, 3/8	6
24	363-004	SPLIT LOCKWASHER, 1/2	4
25	363-005	SPLIT LOCKWASHER, 5/8	1
26	363-006	SPLIT LOCKWASHER, 3/4	1
27	351-003	HEX NUT, 1/2-13	2
28	352-009	HEX JAM NUT, 1/2-13	1
29	355-010	HEX LOCKNUT, STD, 1/2-13	1
30	351-004	HEX NUT, 3/4-10	1
31	998-006	GREASE FITTING, 1/4-28	1

Parts List – Figure 6

When ordering replacement parts/kits, please specify model, serial number and color of your unit.

◆ USE LOCTITE THREAD LOCKER NO. 242



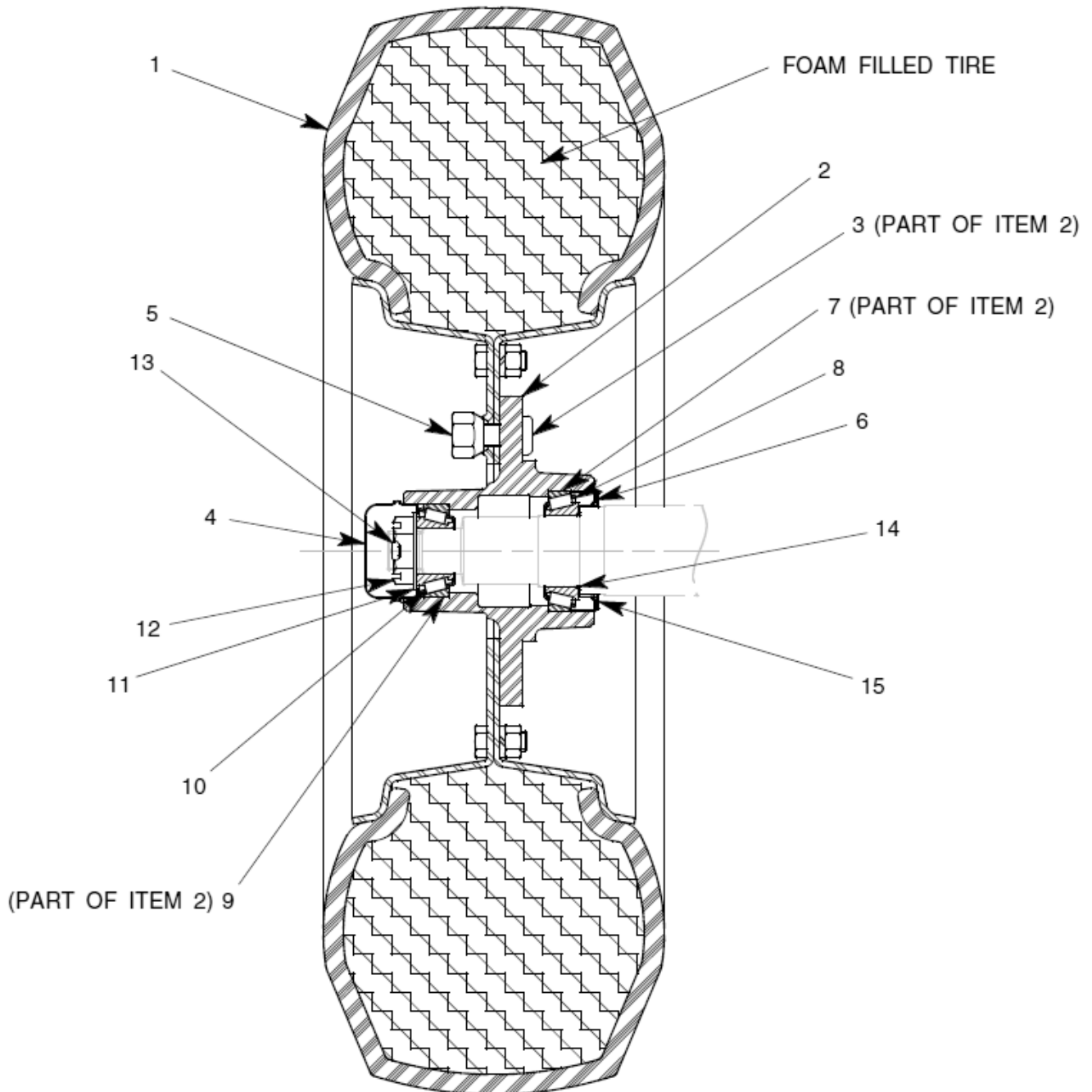
Parts List – Figure 6

When ordering replacement parts/kits, please specify model, serial number and color of your unit.

Item	Part Number	Description	Qty
	878430	CONTROL PANEL ASSEMBLY; consist of:	
1	424-048	AIR VLAVE, 1/4 FPT	1
2	472-003	EXHAUST SILENCER, 1/4 MPT	1
3	473-092	REGULATOR, 1/4 FPT	1
4	482-050	GAUGE, 0-200 PSI, 1/4 MPT	1
5	482-009	GAUGE, 0-4000 PSI, 1/4 MPT	1
6	425-011	RELIEF VALVE, 1/4 MPT	1
7	878426	INSTRUCTION PLACARD	1
8	55997-2	NAMEPLATE	1
9	390-045	GROMMET	1
10	721-015	MALE CONN, 1/4 37° x 1/4 MPT	1
11	421-039	CHECK VALVE, 1/4 MPT	1
12	397-016	SELF TAPPING SCREW, #4	12
13	325-025	FSHCS, 82°, 10-32 x 1/2 LG	2
14	717-006	PLUG, 1/4 MPT	1
15	711-094	NIPPLE, HEX, 1/4 MPT	1
16	711-104	NIPPLE, HEX, 1/4 MPT x 2" LG	1
17	790-004	MALE CONN., 1/4 T x 1/4 MPT	1
18	712-013	ELBOW, 1/4 FPT	2
19	790-005	ELBOW, 1/4 T x 1/4 MPT	2
20	713-012	TEE, STREET, 1/4 NPT	1
21	715-008	CROSS, 1/4 NPT	1
22	999-018	TUBE, BLACK NYLON, 1/4 OD	AR

Parts List – Figure 7

When ordering replacement parts/kits, please specify model, serial number and color of your unit.



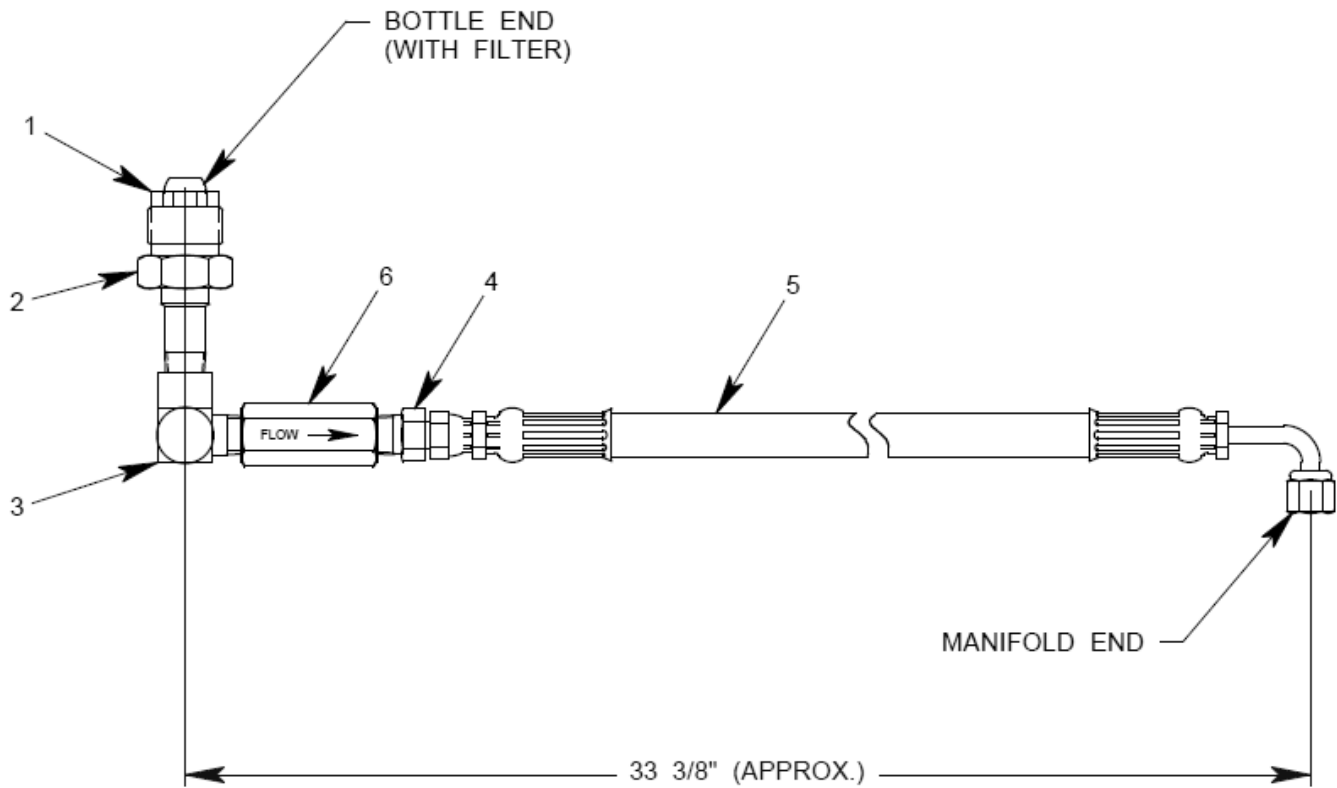
Parts List – Figure 7

When ordering replacement parts/kits, please specify model, serial number and color of your unit.

Item	Part Number	Description	Qty
	878402	HUB & WHEEL ASSEMBLY ; <i>consist of:</i>	
1	492-191	TIRE & WHEEL ASSEMBLY	1
2	492-194	HUB	1
3	492-195	WHEEL BOLT	2
4	492-196	GREASE CAP	1
5	492-094	CONE NUT, 1/2-20	2
6	492-197	GREASE SEAL	1
7	492-198	BEARING CUP, INNER	1
8	492-199	BEARING CONE, INNER	1
9	492-200	BEARING CUP, OUTER	1
10	492-201	BEARING CONE, OUTER	1
11	492-024	KEY WASHER	1
12	492-023	CASTLE NUT, 3/4-16	1
13	372-008	COTTER PIN, 1/8 x 1 1/2 LG	1
14	492-203	O-RING	1
15	492-202	Z-RING	1

Parts List – Figure 8

When ordering replacement parts/kits, please specify model, serial number and color of your unit.

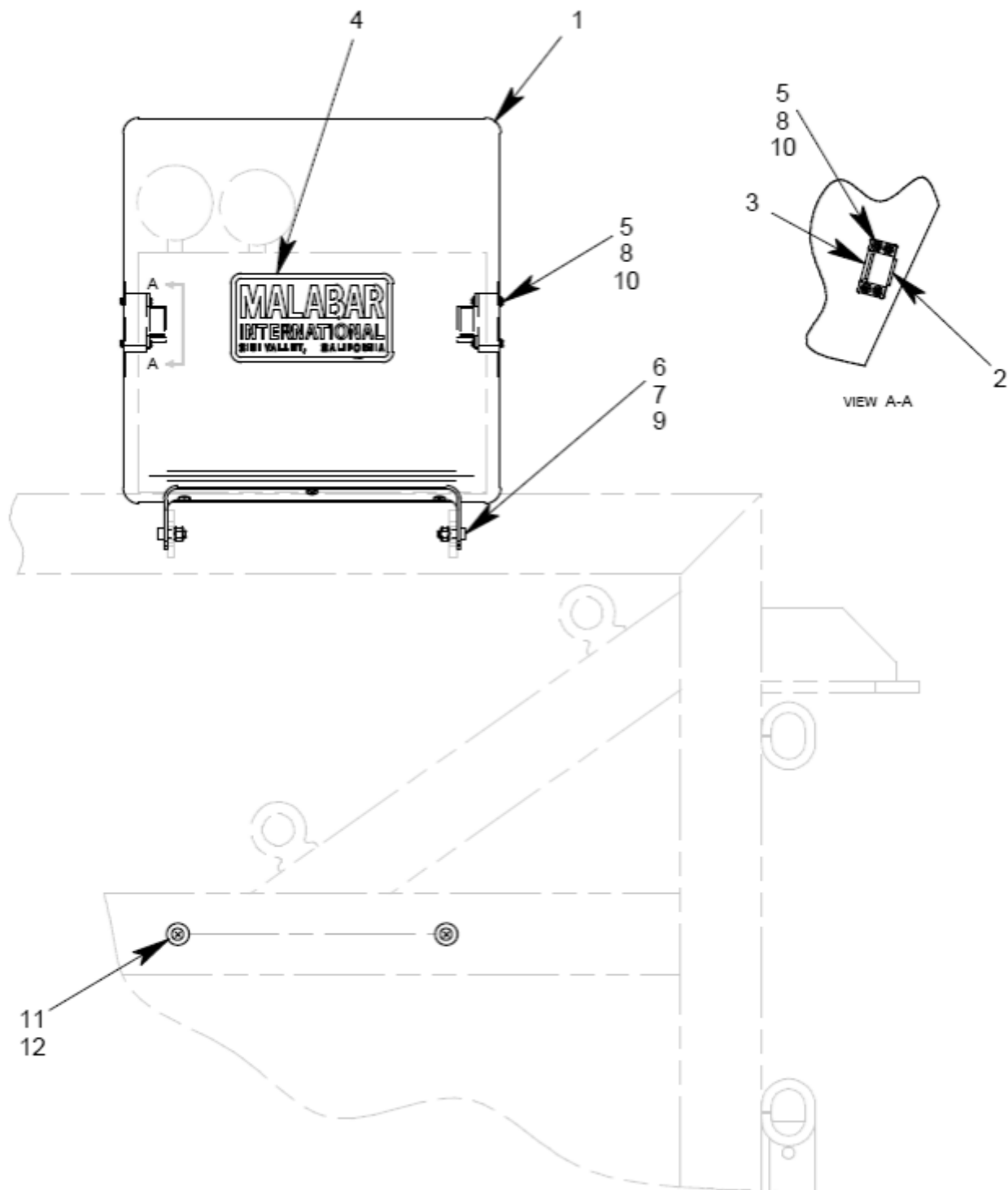


Item	Part Number	Description	Qty
	837695-3	NITROGEN TAILPIECE HOSE ASSEMBLY; consist of:	
1	719-050	CGA680 NIPPLE W/FILTER	1
2	719-051	CGA680 NUT	1
3	712-008	ELBOW, 1/4 NPT	1
4	721-015	CONN., 1/4 37° x 1/4 MPT	1
5	877685-21	TAILPIECE HOSE	1
6	422-065	CHECK VALVE, 1/4 FPT	1

This page left blank intentionally.

Parts List – Figure 9

When ordering replacement parts/kits, please specify model, serial number and color of your unit.



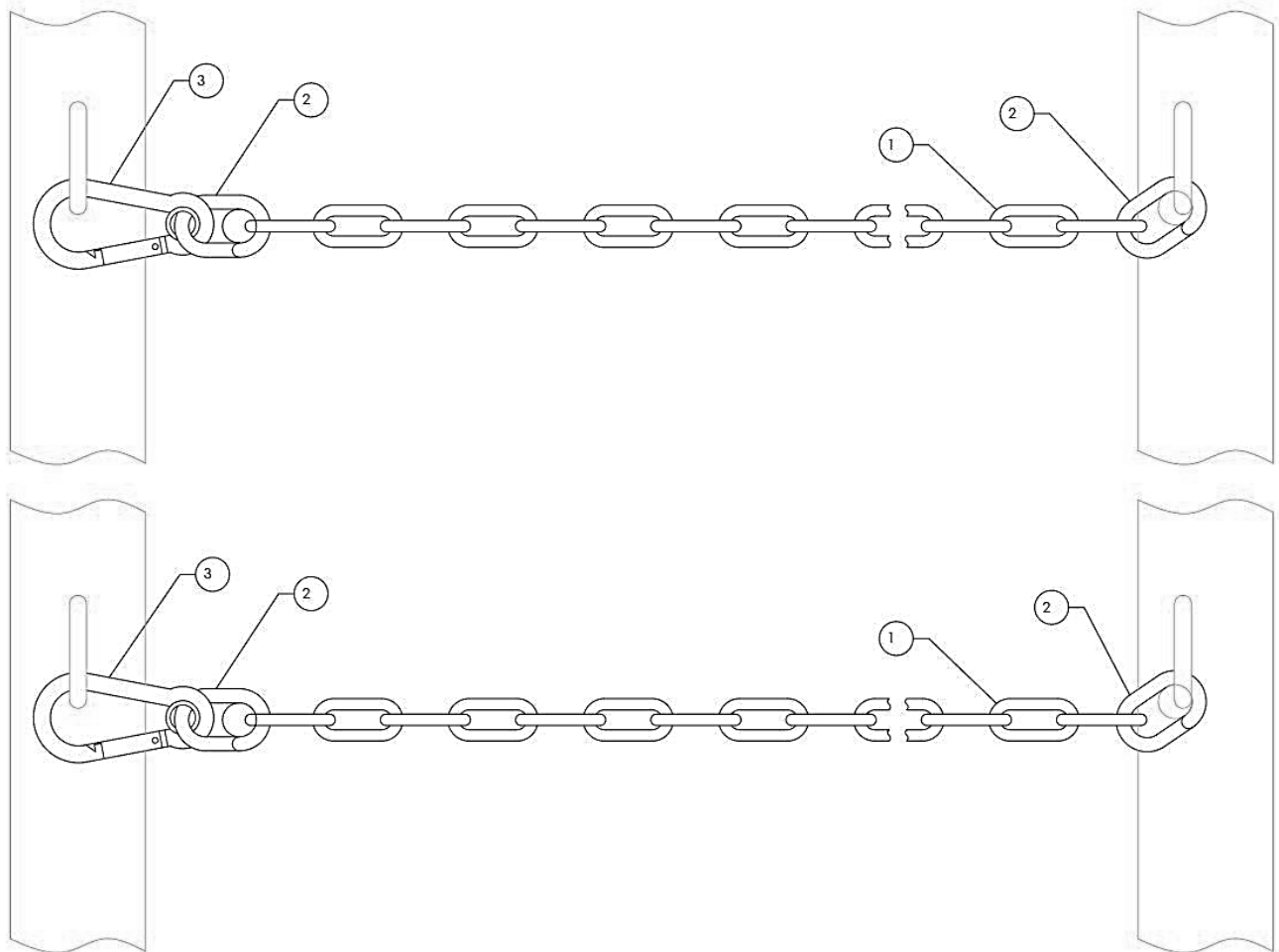
Parts List – Figure 9

When ordering replacement parts/kits, please specify model, serial number and color of your unit.

Item	Part Number	Description	Qty
	878484	PANEL COVER KIT; consist of:	
1	878483	PANEL COVER	1
2	499-057	MAGNETIC CATCH	2
3	878485	SPACER	2
4	55998	STICKER, MALABAR	1
5	326-018	SBHCS, 4-40 x 1/2 LG	12
6	330-015	SHSS, 1/4-20 x 3/8 LG	2
7	351-001	HEX NUT, 1/4-20	2
8	362-028	FLATWASHER, #4	12
9	363-001	SPLIT LOCKWASHER, ¼	2
10	363-019	SPLIT LOCKWASHER, #4	12
11	999-023	BUMPER	2
12	397-017	SELF TAPPING SCREW, 10-24	2

Parts List – Figure 10

When ordering replacement parts/kits, please specify model, serial number and color of your unit.



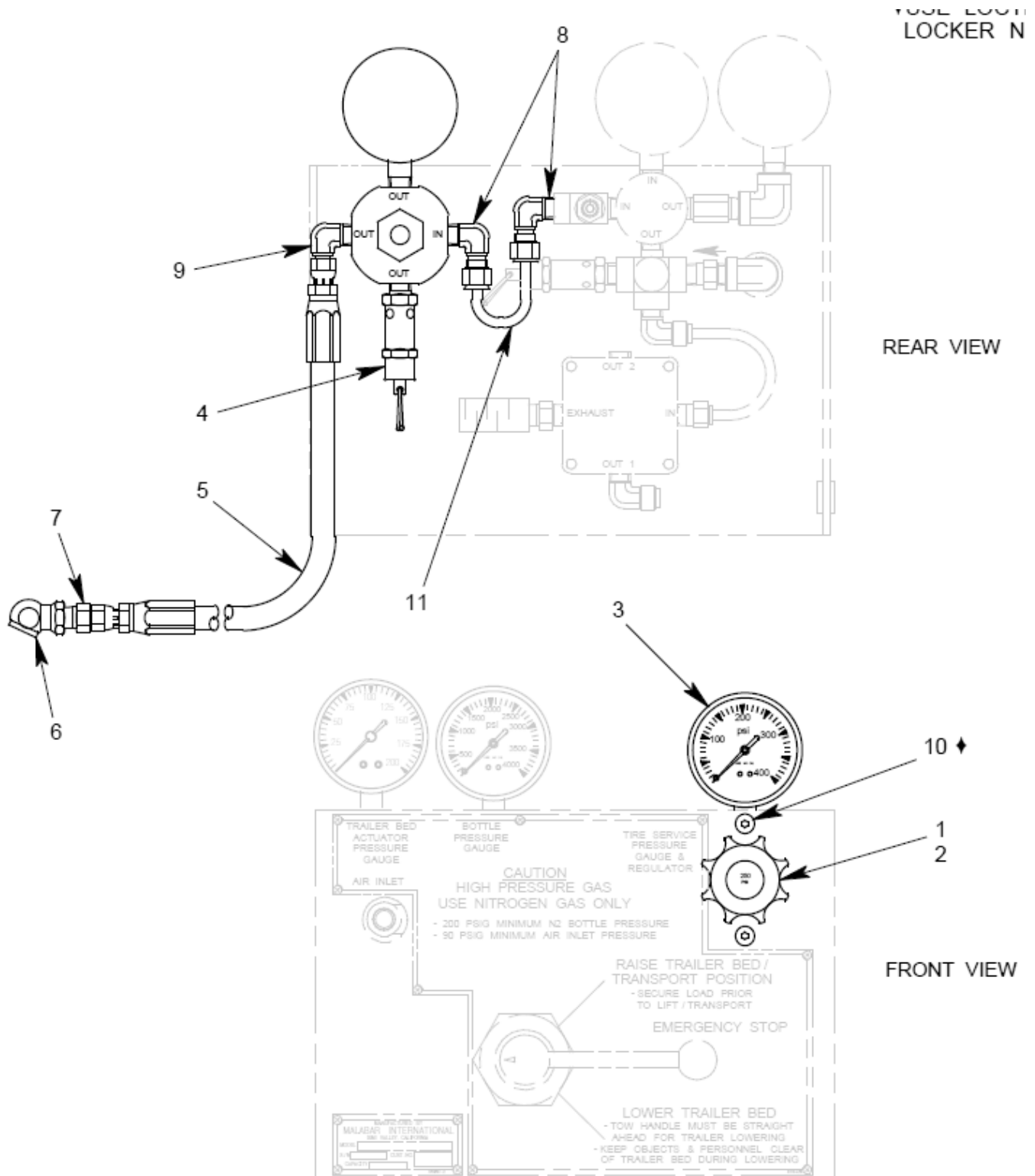
Item	Part Number	Description	Qty
	878490	SIDE CHAIN KIT; consist of:	
1	491-063-60.00	STRAIGHT LINK CHAIN	4
2	491-064	OPEN END LINK	8
3	491-022	CARBINE SNAP HOOK	

This page left blank intentionally.

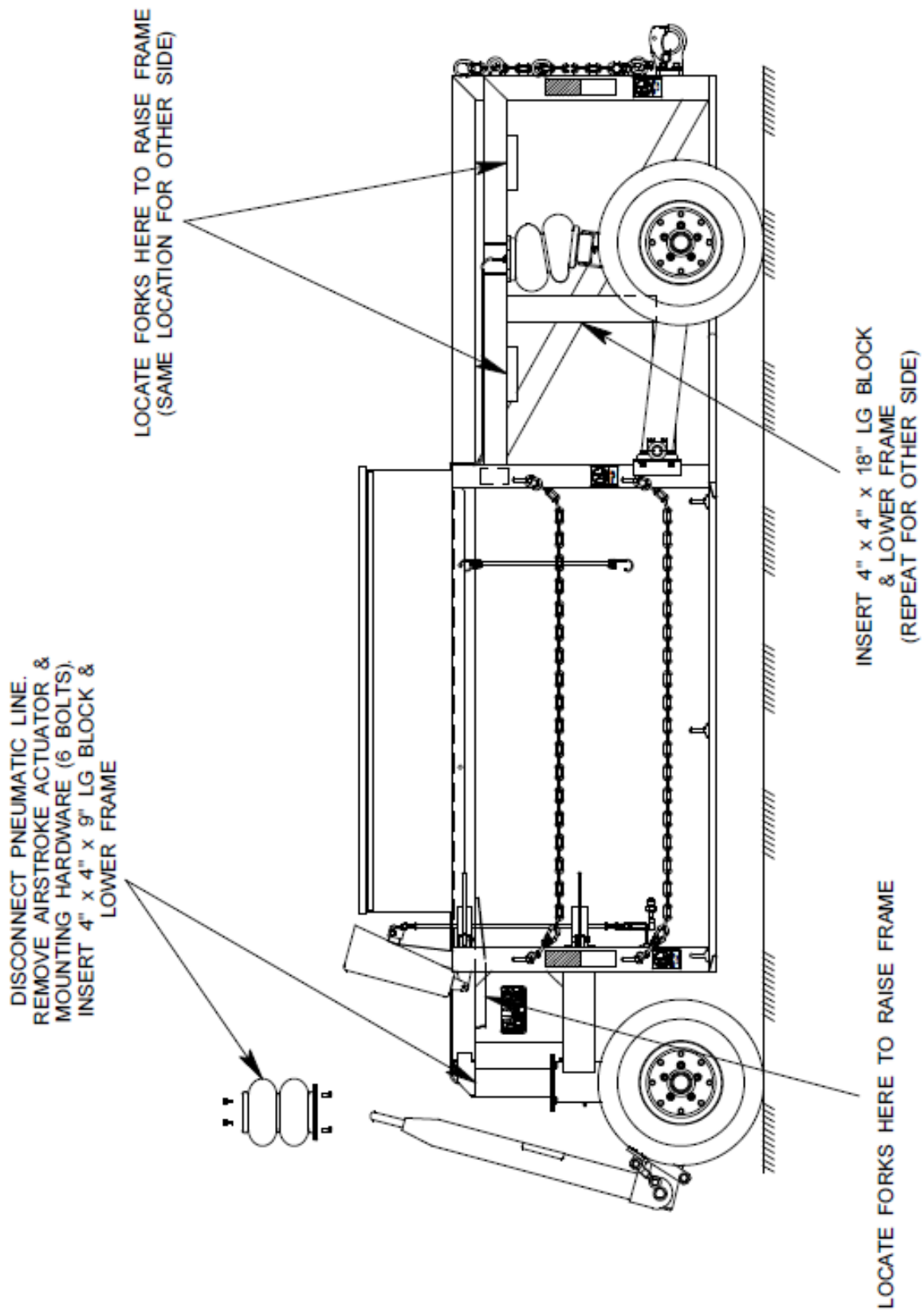
Parts List – Figure 11

When ordering replacement parts/kits, please specify model, serial number and color of your unit.

◆ USE LOCTITE THREAD LOCKER NO. 242



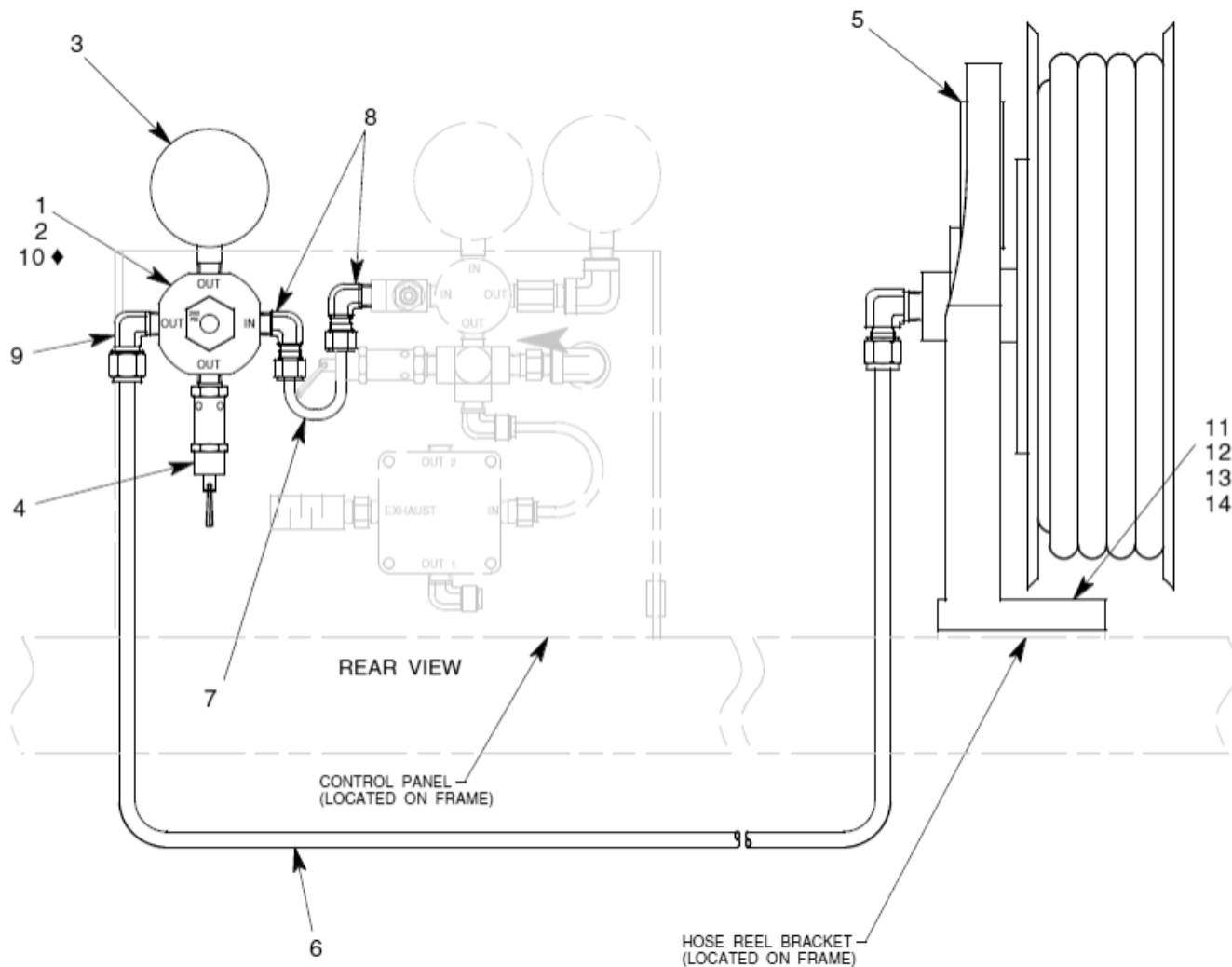
**Parts List – Figure 12
EMERGENCY TRAILER MOBILIZATION**



Parts List – Figure 3

When ordering replacement parts/kits, please specify model, serial number and color of your unit.

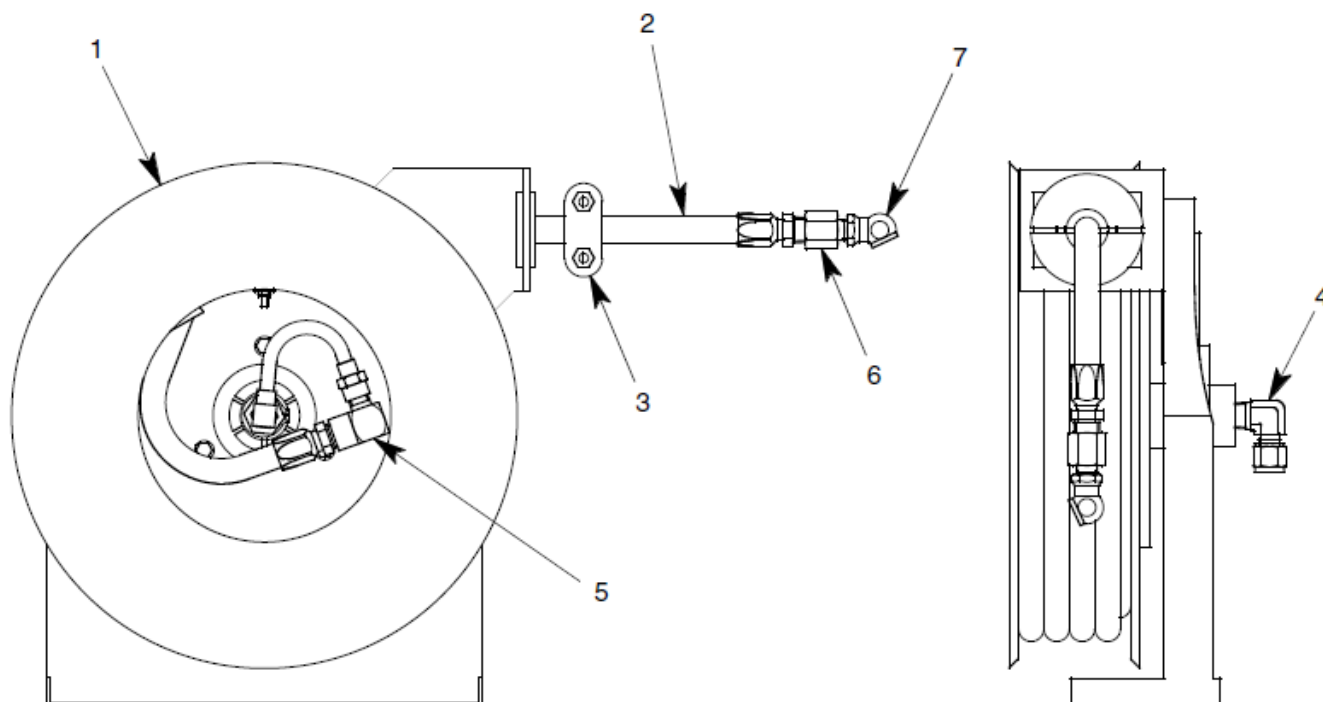
◆ USE LOCTITE THREAD LOCKER NO. 242



Item	Part Number	Description	Qty
	878450	TIRE SERVICE KIT WITH HOSE REEL; consist of:	
1	473-047	REGULATOR, 0-250 PSI	1
2	473-082	REGULATOR MOUNT BRKT	1
3	482-010	GAUGE, 0-400 PSI, 1/4 MPT	1
4	421-007	RELIEF VALVE, 275 PSI	1
5	878455	LOW PRESSURE HOSE REEL	1
6	732-002	TUBE, 3/8 OD x .049 WALL	AR
7	732-003	TUBE, 1/4 OD x .035 WALL	AR
8	722-021	ELBOW, 1/4 T x 1/4 MPT	2
9	722-014	ELBOW, 3/8 T x 1/4 MPT	1
10	324-019	SBHCS, 1/4-20 x 3/4 LG	2
11	321-083	HHCS, 5/16-18 x 1" LG	4
12	362-002	FLAT WASHER, SAE, 5/16	8
13	363-002	SPLIT LOCKWASHER, 5/16	4
14	351-012	HEX NUT, 5/16-18	4

Parts List – Figure 14

When ordering replacement parts/kits, please specify model, serial number and color of your unit.



Item	Part Number	Description	Qty
	878455	LOW PRESSURE HOSE REEL ASSEMBLY; consist of:	
1	499-005	HOSE REEL W/OUT HOSE	1
2	877694-1	HOSE, 35 FT LG	1
3	499-038	HOSE BUMPER	1
4	722-10	ELBOW, 3/8 T x 3/8 MPT	1
5	712-031	ELBOW, 1/4 MPT x 3/8 FPT	1
6	714-012	REDUCER, 3/8 FPT x 1/4 MPT	1
7	719-010	AIR CHUCK	1