



**Model: 9764-010**  
**Wheel Lift Trailer**  
SN 80805 and Later

03/2019 – Rev. 01

REVISION  
01

DATE  
03/2019

TEXT AFFECTED  
Original release

## TABLE OF CONTENTS

	<u>PAGE</u>
<b>1.0 PRODUCT INFORMATION .....</b>	<b>1</b>
1.1 DESCRIPTION.....	1
1.2 MODEL & SERIAL NUMBER.....	1
1.3 MANUFACTURER .....	1
1.4 SPECIFICATIONS .....	1
<b>2.0 SAFETY INFORMATION.....</b>	<b>1</b>
2.1 USAGE AND SAFETY INFORMATION .....	1
<b>3.0 TRAINING .....</b>	<b>1</b>
3.1 TRAINING REQUIREMENTS .....	1
3.2 TRAINING PROGRAM .....	1
3.3 OPERATOR TRAINING .....	1
<b>4.0 OPERATION.....</b>	<b>2</b>
4.1 WHEEL REMOVAL.....	2
4.2 TOWING .....	2
<b>5.0 MAINTENANCE.....</b>	<b>2</b>
5.1 PERIODIC LUBRICATION.....	2
<b>6.0 PROVISION OF SPARES.....</b>	<b>3</b>
6.1 SOURCE OF SPARE PARTS.....	3
6.2 RECOMMENDED SPARE PARTS LISTS .....	3
<b>7.0 IN SERVICE SUPPORT.....</b>	<b>3</b>
<b>8.0 GUARANTEES/LIMITATION OF LIABILITY .....</b>	<b>3</b>

This product can not be modified without the written approval of Tronair, Inc. Any modifications done without written approval voids all warranties and releases Tronair, Inc., its suppliers, distributors, employees, or financial institutions from any liability from consequences that may occur. Only Tronair OEM replacement parts shall be used.

## 1.0 PRODUCT INFORMATION

### 1.1 DESCRIPTION

Wheel Lift Trailer

### 1.2 MODEL & SERIAL NUMBER

Reference nameplate on unit

### 1.3 MANUFACTURER

Columbus**Jack**/Regent  
1 Air Cargo Pkwy East  
Swanton, Ohio 43558 USA

Telephone: 614.443.7492  
Fax: 614.444.9337  
E-mail: sales@columbusjack.com  
Website: www.columbusjack.com

### 1.4 SPECIFICATIONS

Capacity ..... 800 lbs (363 kg)  
Tire Minimum Diameter ..... 30 in (76.2 cm)  
Tire Maximum Diameter ..... 60 in (152.4 cm)  
Distance Between Tines ..... 26-44 in (66-106.7 cm)  
Estimated Weight ..... 490 lbs (222 kg)  
Maximum Towing Speed ..... 5 mph (8 kph)

## 2.0 SAFETY INFORMATION

### 2.1 USAGE AND SAFETY INFORMATION

To insure safe operations please read the following statements and understand their meaning. Also refer to your equipment manufacturer's manual for other important safety information. This manual contains safety precautions which are explained below. Please read carefully.



**WARNING!** — Warning is used to indicate the presence of a hazard that **can cause severe personal injury, death, or substantial property damage** if the warning notice is ignored.

**CAUTION!** — Caution is used to indicate the presence of a hazard that **will or can cause minor personal injury or property damage** if the caution notice is ignored.

## 3.0 TRAINING

### 3.1 TRAINING REQUIREMENTS

The employer of the operator is responsible for providing a training program sufficient for the safe operation of the unit.

### 3.2 TRAINING PROGRAM

The employer provided operator training program should cover safety procedures concerning use of the unit in and around the intended aircraft at the intended aircraft servicing location.

### 3.3 OPERATOR TRAINING

The operator training should provide the required training for safe operation of the unit.

**NOTE: Maintenance and Trouble Shooting are to be performed by a skilled and trained technician.**

## 4.0 OPERATION

### 4.1 WHEEL REMOVAL

1. Verify that the dolly lifting frame is close to the ground and nothing is stowed on it.
2. Maneuver dolly into position so that rollers straddle the wheel.
3. Pull up on lock pin and slide arm assembly to the desired position.
4. Release lock pin and lock arm in position.
5. Repeat for the other arm assembly.



#### CAUTION!

**Both adjustable arms must be locked in the same position to insure wheel center is in center of dolly.**

6. With trailer in place around wheel, raise adjustable frame assembly by closing the release valve on the hand pump until there is contact with tire.

**NOTE: When the adjustable frame assembly has been raised approximately six inches from the bottom position, the lock pin will detent in its hole in the main frame vertical column to lock the adjustable frame assembly in position. If it is necessary to elevate the adjustable frame assembly higher, hold the lock pin out and continue the hand pump operation.**

7. Remove wheel per aircraft manufacturer's instructions and secure the wheel to the trailer with the cargo tie down.

**NOTE: To lower dolly, open release valve on the hydraulic jack. Rate of descent is proportionate to the amount of release valve opening.**

8. Remove dolly from under aircraft.

### 4.2 TOWING



#### CAUTION!

**Maximum towing speed 5 mph (8 kph).**

1. To avoid strain on the hydraulic system, never tow the trailer with the adjustable frame assembly elevated unless the pin is engaged to lock it.
2. If a wheel is on the trailer, have the adjustable frame assembly raised to the pin locking position with the pin secured in its hole.
3. If a wheel is not on the trailer, have the adjustable frame assembly lowered to the bottom position.
4. When towing the trailer, the two front casters should be free to rotate, while the two back casters must be locked from swiveling.
5. A maximum of three trailers may be towed in a train.



#### CAUTION!

**Always have the adjustable frame assembly lowered to the bottom position when trailer is parked.**

## 5.0 MAINTENANCE

### 5.1 PERIODIC LUBRICATION

The following areas should be lubricated monthly with MIL-G-10924:

- Lube fittings
- Casters
- Remove pipe cap and rollers from arm assembly and lube exposed arm weldment. Reinstall rollers and pipe cap

## **6.0 PROVISION OF SPARES**

### **6.1 SOURCE OF SPARE PARTS**

Spare parts may be obtained from the manufacturer:

ColumbusJack/Regent

1 Air Cargo Pkwy East

Swanton, Ohio 43558 USA

Telephone: 614.443.7492

Fax: 614.444.9337

E-mail: sales@columbusjack.com

Website: www.columbusjack.com

### **6.2 RECOMMENDED SPARE PARTS LISTS**

Reference the following page(s) for Replacement Parts and Kits available.

## **7.0 IN SERVICE SUPPORT**

Contact ColumbusJACK, Inc. for technical services and information. See Section 1.3 – Manufacturer.

## **8.0 GUARANTEES/LIMITATION OF LIABILITY**

1. ColumbusJACK Corporation, (Seller) warrants each new product of its manufacture to be free from defects in material or workmanship, under proper, reasonable and normal use and service, and for a period of twelve (12) months after date of shipment from Seller's Swanton, OH. USA facility.
2. Where Buyer claims an alleged defect in material or workmanship and so advises Seller in writing within ten (10) days after discovery thereof, then and in such event, Buyer shall return said equipment, transportation prepaid, to the Seller, provided such return is timely and within twelve (12) months form date of original shipment. This warranty and liability of the Seller is expressly limited solely to replacement of repair of defective parts or goods, and return at Buyer's expense to Seller after find by Seller the product was defective prior to original shipment or, at the option of Seller, to making refund to Buyer of the purchase price for said product.
3. It is further expressly understood and agreed that:
  - a. THERE IS NO WARRANTY, representation of condition OF ANY KIND, express or implied, (INCLUDING NO WARRANTY OF MERCHANT-ABILITY OR OF FITNESS) EXCEPT THAT THE MATERIAL SHALL BE OF THE QUALITY SPECIFIED HEREIN, and none shall be implied by law. Except as otherwise provided herein, quality shall be in accordance with seller's specifications. Final determination of the material for the use contemplated by Buyer is the sole responsibility of Buyer and Seller shall have no responsibility in connection with such suitability, and
  - b. The Buyer's sole and exclusive remedy shall be repair or replacement of defective parts by the Seller. Should the goods, in the judgment of Seller, preclude the remedying of the warranted defects by repair or replacement, the buyer's sole and exclusive remedy shall be the refund of the purchase price, and
  - c. Seller shall not be liable for prospective profits or special, indirect or consequential damages, nor shall any recovery of any kind against Seller be greater in amount than the purchase price of the specific material sold and causing the alleged loss, damage or injury. Buyer assumes all risk and liability for loss, damage or injury to persons or property of Buyer or others arising out of use or possession of any product or part sold hereunder, and
  - d. The Seller shall in no way be deemed or held to be obligated, liable or accountable upon or for any guarantees or warranties, express or implied, or created by statute or by operation of law or otherwise, in any manner of form beyond its express agreement above set forth, and
  - e. No warranty herein shall apply to any product which shall have been repaired or altered, unless such alteration or repair has been made by Seller or where, after return to and inspection by Seller, the product is found by Seller to have been subject to misuse, negligence or accident, and
  - f. No warranty of any nature is made by Seller as to any component forming a part of the product sold and Buyer shall receive only such warranties offered by such other manufacturer pertinent to such component, and
  - g. Seller does not assume nor does Seller authorize any other person to assume for it any other liability or make any warranty in connection with the sale of its products.

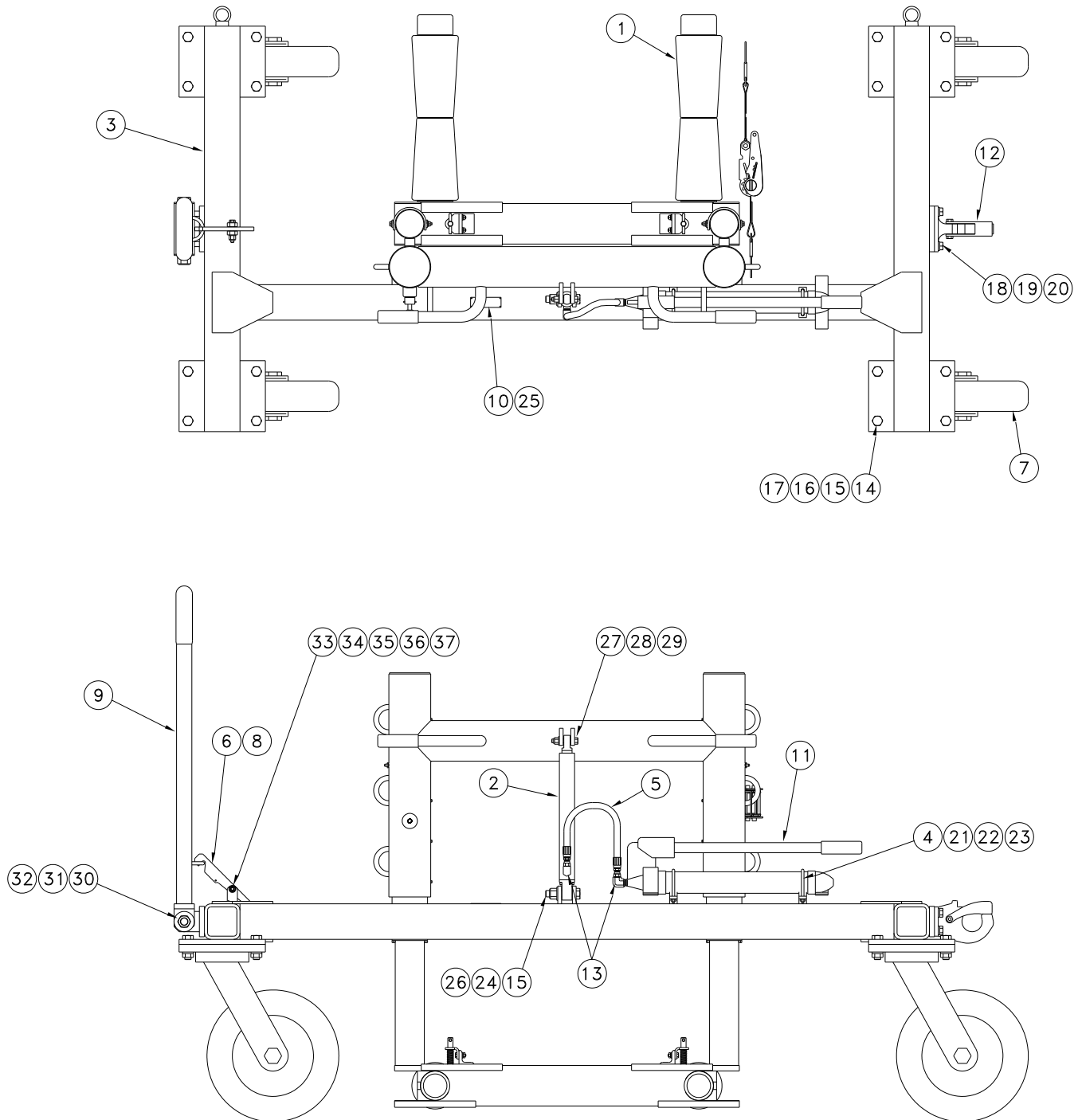
The obligations of ColumbusJACK expressly stated herein are in lieu of all other warranties or conditions expressed or implied.

**Any unauthorized modification of the ColumbusJACK products or use of the ColumbusJACK products in violations of cautions and warnings in any manual (including updates) or safety bulletins published or delivered by ColumbusJACK will immediately void any warranty, express or implied and ColumbusJACK disclaims any and all liability for injury (WITHOUT LIMITATION and including DEATH), loss or damage arising from or relating to such misuse.**

This page left blank intentionally.

## Parts List

When ordering replacement parts/kits, please specify model, serial number and color of your unit.





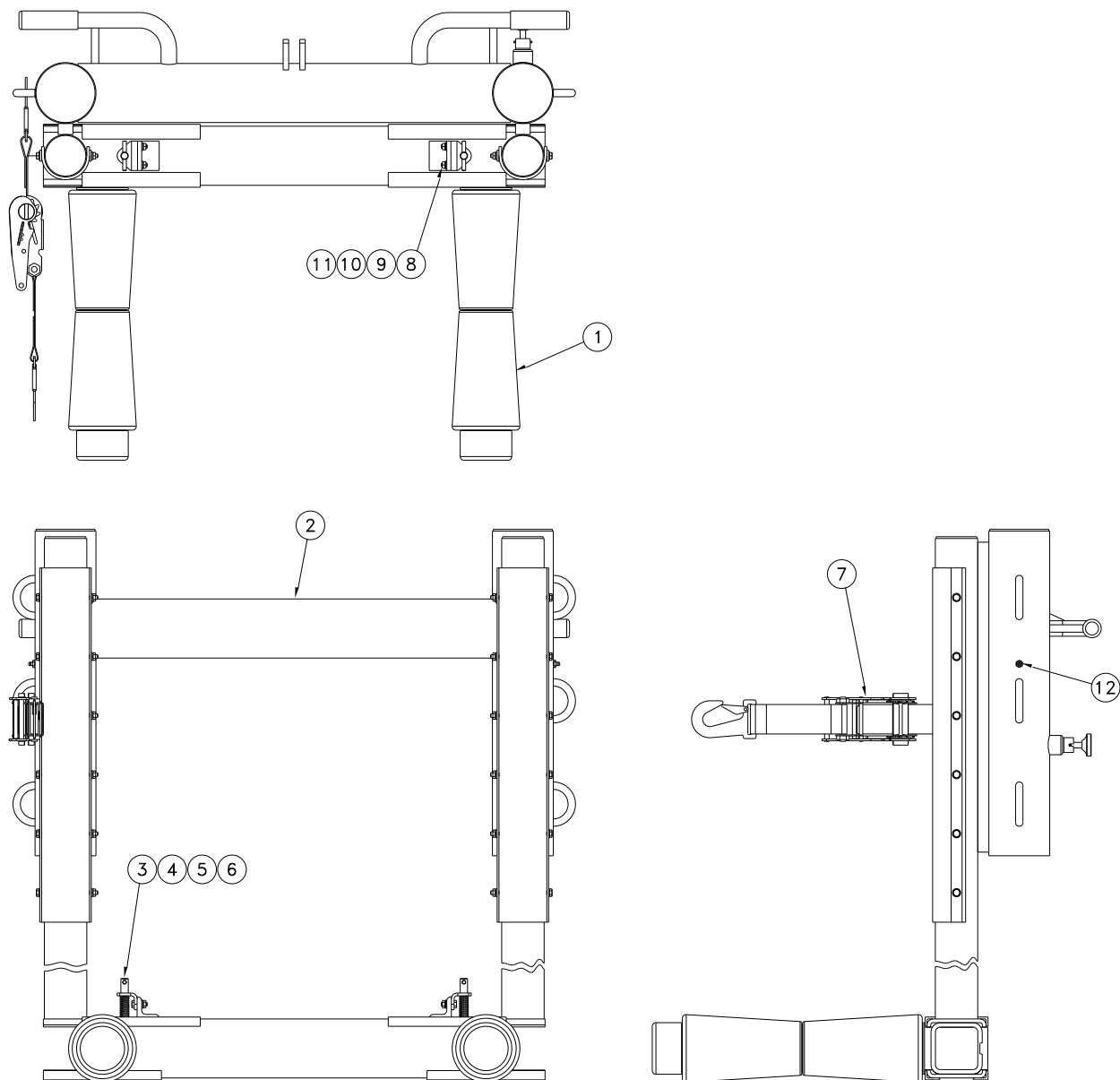
## Parts List

When ordering replacement parts/kits, please specify model, serial number and color of your unit.

ITEM	PART NUMBER	DESCRIPTION	QTY
1	9701-010	Adjustable Frame Assembly	1
2	9764-C	Cylinder Assembly	1
3	9764-1	Frame Weldment	1
4	9764-5	U-Bolt	2
5	9764-6	Hose Assembly	1
6	9764-7	Spring	1
7	9764-10	Caster	4
8	9764-15	Towbar Lock	1
9	9764-20	Towbar	1
10	915-176	Namplate	1
11	9764-39	Hand Pump	1
12	450A6349	Pintle Hook	1
13	456-10606	Male Elbow	2
14	MS90726-163	Hex Head Cap Screw	16
15	345-11040	Washer, Flat	33
16	346-10040	Lockwasher	16
17	333-52400	Hex Nut	16
18	MS90726-109	Hex Head Cap Screw	4
19	345-11032	Washer, Flat	4
20	346-10032	Lockwasher	4
21	345-11016	Washer, Flat	4
22	346-10016	Lockwasher	4
23	333-41201	Hex Nut	4
24	372-24240	Hex Head Cap Screw	1
25	MS21318-13	Drive Screw	4
26	333-32400	Hex Locknut	1
27	372-18240	Hex Head Cap Screw	1
28	345-11028	Washer, Flat	1
29	333-31800	Hex Locknut	1
30	372-26520	Hex Head Cap Screw	1
31	345-11048	Washer, Flat	2
32	333-32600	Hex Locknut	1
33	372-14200	Hex Head Cap Screw	1
34	345-11020	Washer, Flat	2
35	333-31300	Hex Locknut	1
36	MS16562-33	Spring Pin	1
37	MS16562-39	Spring Pin	1

## Parts List

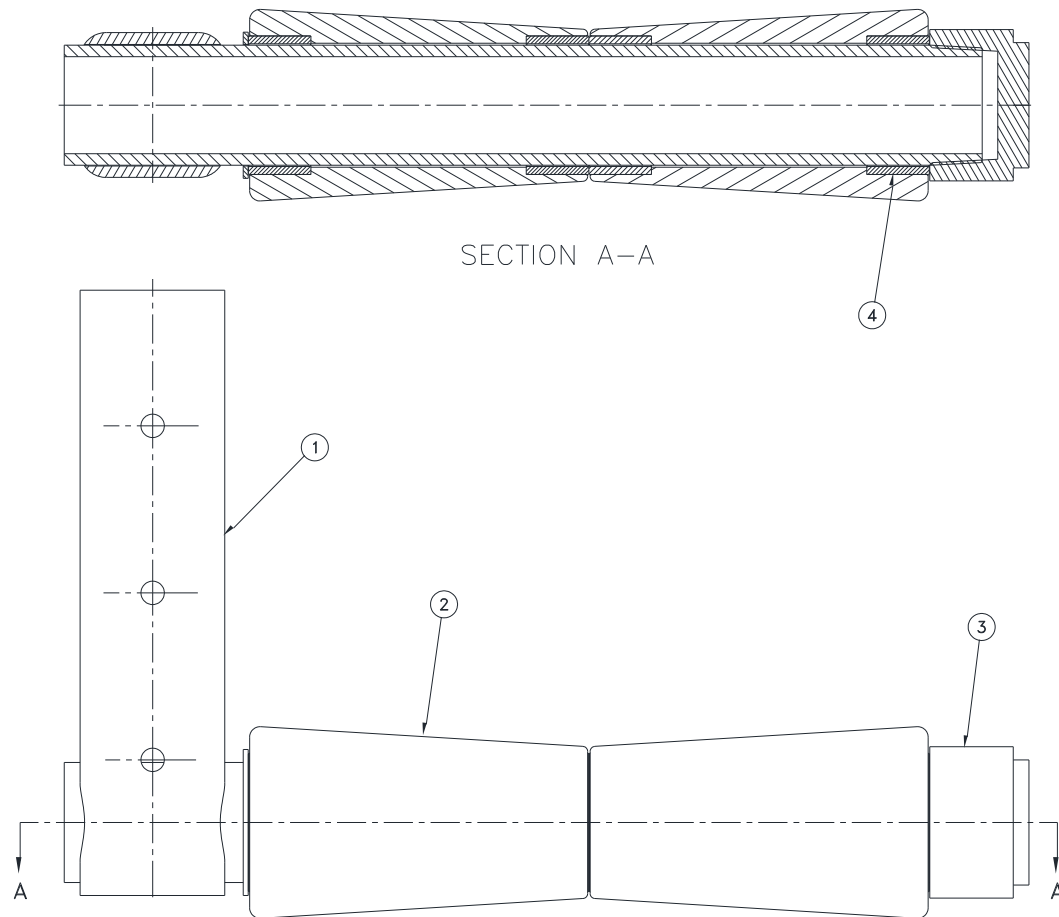
When ordering replacement parts/kits, please specify model, serial number and color of your unit.



ITEM	PART NUMBER	DESCRIPTION	QTY
	<b>9701-010</b>	<b>Adjustable Frame Assembly</b> ; consists of:	
1	9701-D	Arm Assembly	2
2	9701-G	Lower Brace Assembly	1
3	9701-26	Lock Pin	2
4	9701-27	Plate Support	2
5	916-185-44	Spring	2
6	324-08160	Dowel Pin	2
7	450A6018	Cargo Tie Down Assembly	1
8	372-12080	Hex Head Cap Screw	4
9	333-41201	Hex Nut	4
10	345-11016	Flat Washer	4

## Parts List

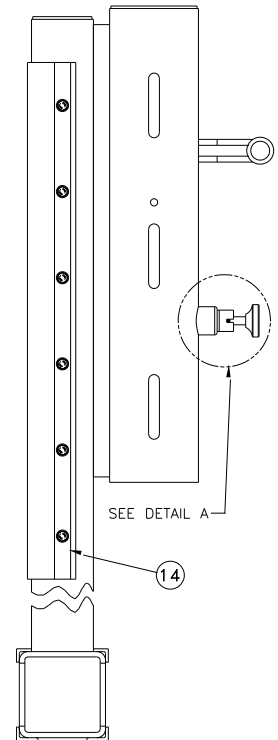
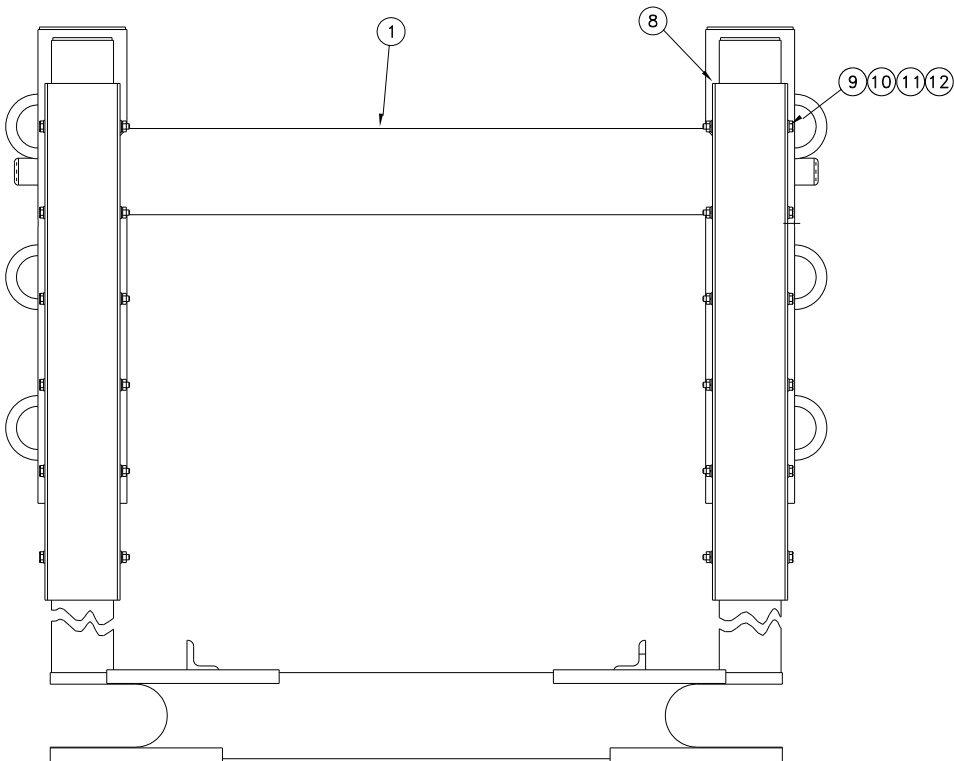
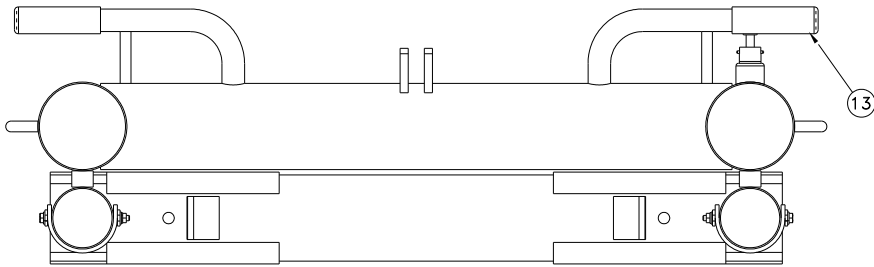
When ordering replacement parts/kits, please specify model, serial number and color of your unit.



ITEM	PART NUMBER	DESCRIPTION	QTY
	<b>9701-D</b>	<b>Arm Assembly</b> ; consists of:	
1	9701-3	Arm Weldment	1
2	9701-4	Arm Roller	2
3	9701-5	Pipe Cap	1
4	9701-6	Sleeve	4

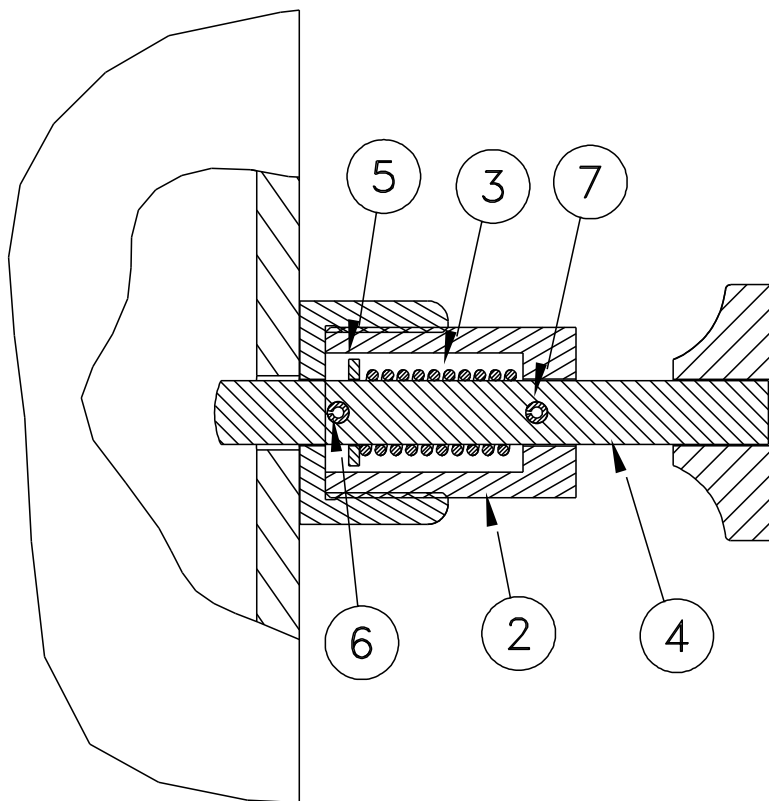
## Parts List

When ordering replacement parts/kits, please specify model, serial number and color of your unit.



## Parts List

When ordering replacement parts/kits, please specify model, serial number and color of your unit.

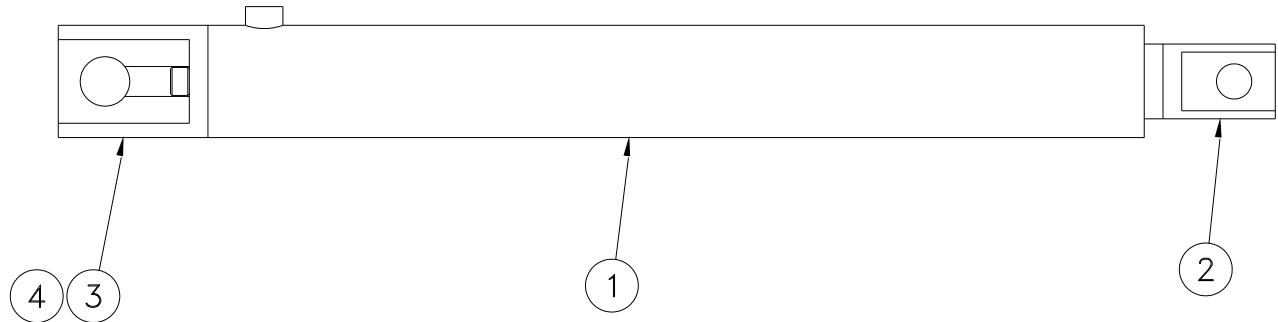


DETAIL A

ITEM	PART NUMBER	DESCRIPTION	QTY
	<b>9701-G</b>	<b>Lower Brace Assembly</b> ; consists of:	
1	9701-2	Lower Brace	1
2	9701-31	Spring Retainer	1
3	9701-32	Spring	1
4	9701-33	Pin Weldment	1
5	345-11024-L	Flat Washer	1
6	325-04040	Spring Pin	1
7	325-04200	Spring Pin	1
8	9701-7	Guard	2
9	372-12300	Hex Head Cap Screw	12
10	333-41201	Hex Nut	12
11	346-10016	Lockwasher	12
12	345-11016	Flat Washer	24
13	915-BSB-33	Grip	2
14	9701-34	Retainer	4

## Parts List

When ordering replacement parts/kits, please specify model, serial number and color of your unit.



ITEM	PART NUMBER	DESCRIPTION	QTY
	<b>9764</b>	<b>Cylinder Assembly</b> ; consists of:	
1	450A6600	Cylinder	1
2	9764-16	Rod End	1
3	9764-17	Cylinder Mount	1
4	378-12050	Socket Head Cap Screw	2