



**Model: K-2685
PW-530A
Engine Adaptor Kit**

**Parts List
With Illustrations**



07/1997 – Rev. OR

When ordering Replacement Parts/Kits, please specify Model, Color and Serial Number of your Unit.

**Model: K-2685
PW-530A Engine Adaptor Kit**

This product can not be modified without the written approval of Tronair, Inc. Any modifications done without written approval voids all warranties and releases Tronair, Inc., its suppliers, distributors, employees, or financial institutions from any liability from consequences that may occur. Only Tronair OEM replacement parts shall be used.

This Pratt Whitney PW-530A engine support kit is to be used with 08-2030-000 engine stand. The engine stand has multiple adjustments to accommodate the installation of various engines using specific engine adaptor kits.

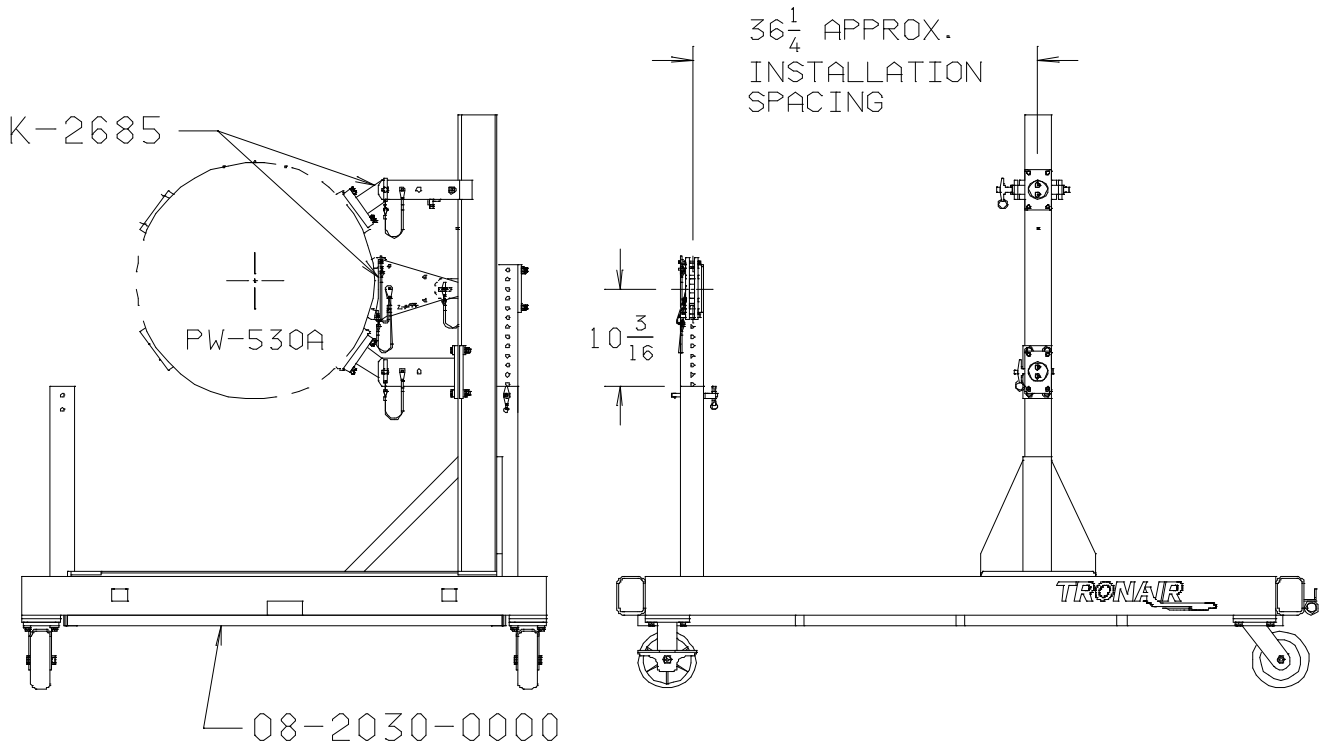


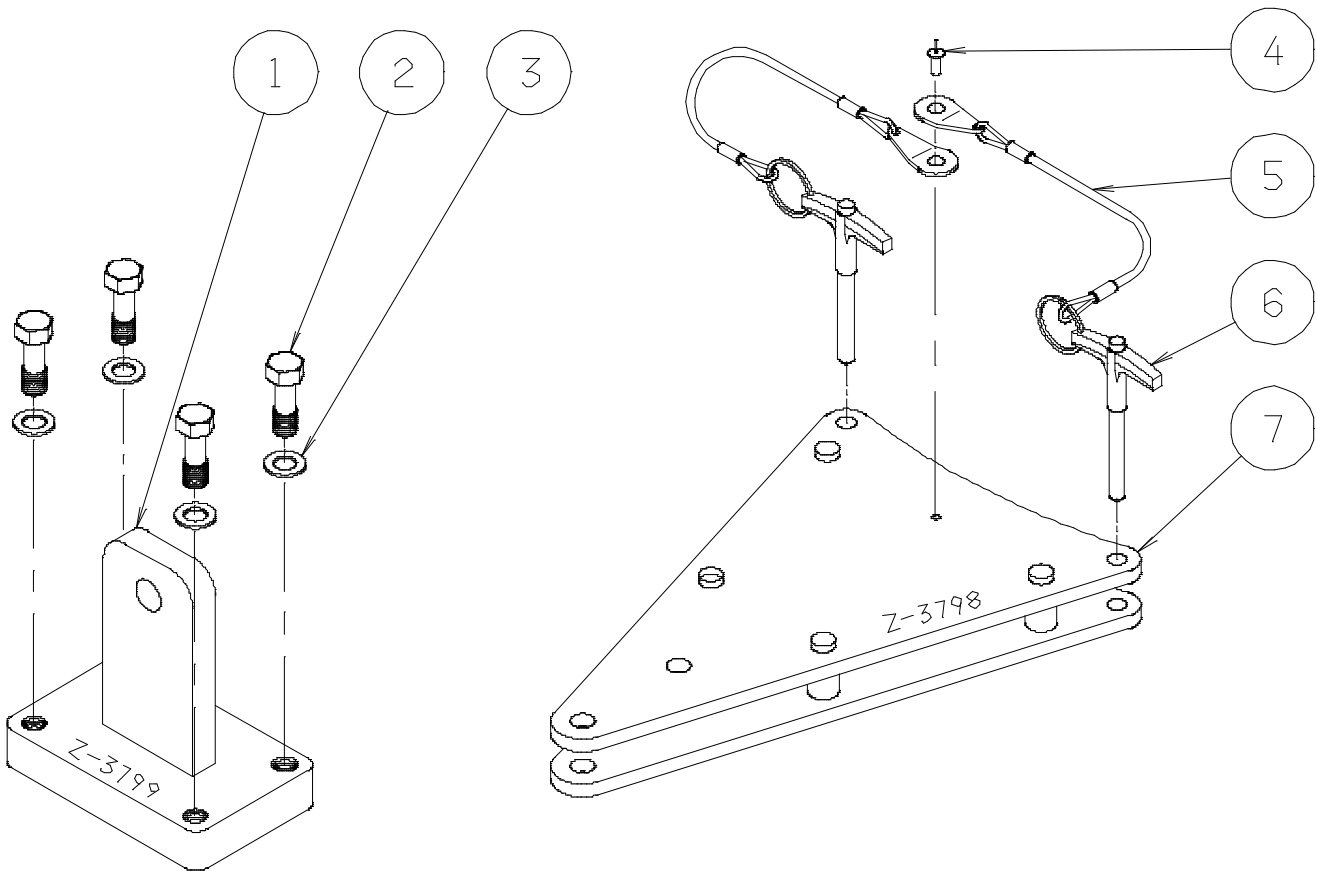
Figure 1

ENGINE INSTALLATION INSTRUCTIONS:

1. With the engine hung from the 08-0130-4010 engine sling, remove the existing air frame mounts from the engine.
2. Attach the engine mounting pads (Z-3799) to the engine mounting locations on the front of the engine and attach the rear mounting adaptor (Z-3798) to the rear attach point on the engine. (See Figure 1).
3. Position the front support beam 36 $\frac{1}{4}$ inches from the rear support post. (See Figure 1).
4. Position the height of the rear support up 10-3/16 inches. (See Figure 1).
5. Position engine into the engine stand and attach rear adapter to engine stand.
6. Adjust final location of the front support beam and attach the front engine mounting pads to the engine stand.
7. Tighten the lock out screws on the front support beam.
8. The engine sling can now be removed for engine service.
9. Reverse steps 2-8 to remove the engine from the stand.

Model: K-2685
PW-530A Engine Adaptor Kit

Parts List



ITEM	PART NO.	DESCRIPTION	QTY
1	Z-3703	Weldment PW-530A Mount.....	1
2	G-1127	Modified Bolt	4
3	G-1255-07	3/8" Washer.....	4
4	G-1351-04	1/8 STL Open-End Rivet.....	1
5	H-1026-07.0.....	Lanyard Assembly.....	2
6	G-1310-0713	7/16 Diameter x 1.3" Long Ball Lok-T Pin	2
7	Z-3797	Weldment PW-530A Rear Adapter.....	1
K-2735			
Kit, Mounting Pad; consists of:			
1	Z-3703	Weldment PW-530A Mount.....	1
2	G-1127	Modified Bolt	4
3	G-1255-07	3/8" Washer.....	4

TRONAIR

07/1997 – Rev. OR



APPENDIX II

Declaration of Conformity



DECLARATION of CONFORMITY

The design, development and manufacture is in accordance with European Community guidelines

K-2685
Engine Adaptor Kit
PW530A

Relevant draft complied with by the machinery:
EN ISO 12100-1

Relevant standards complied with by the machinery:
EN ISO 12100-1
EN 1915-1:2001 (5.20)

Identification of person empowered to sign on behalf of the Manufacturer:

A handwritten signature in black ink, reading "David L. Kidd". The signature is written in a cursive style with a large, prominent "D" and "K".

Quality Assurance Representative