



**Model: K-2868
PW530A/PW545A
Engine Adapter Sling Kit**

**Parts List
With Illustrations**

04/2007 – Rev. 04

**** When ordering Replacement Parts/Kits, please specify Model, Color and Serial Number of your Unit.****

1740 Eber Rd
Holland, OH 43528-9794
USA

Tronair, Inc.
www.tronair.com
Email: sales@tronair.com

Phone: (419) 866-6301
800-426-6301
Fax: (419) 867-0634

Model: K-2868
PW530A/PW545A Engine Adapter Sling Kit

This product can not be modified without the written approval of Tronair, Inc. Any modifications done without written approval voids all warranties and releases Tronair, Inc., its suppliers, distributors, employees, or financial institutions from any liability from consequences that may occur. Only Tronair OEM replacement parts shall be used.

The K-2868 Engine Sling Adapter Kit for the Pratt and Whitney PW530A and PW545A engines is to be used with the 08-0130-4000, 08-0134-4000 or the 08-0135-4000 Engine Sling Bar Assemblies. See appropriately labeled diagram for the proper sling setup. Always follow the manufacturer's instructions for proper engine handling.

MODELS: 08-0134-4000 and 08-0135-4000

ENGINE HANGING INSTRUCTIONS for the PW530A ENGINE:

1. Locate the slide blocks on the engine sling bar assembly with the front slide block located at 19 1/4 inches forward of zero point. Locate the rear slide block at 19 1/4 inches aft of zero point and position the lift point at 4 3/4 inches forward of zero point. Ensure that all lifting straps have been securely installed into the slide blocks (**see Figure 1**). The strap kit retaining ring may be placed into one of the unused holes in either of the slide blocks for storage.
2. The sling is now ready to be installed onto the aircraft engine.
3. Lift engine sling slightly and check positioning of the lift points to ensure that the engine is balanced when lifting.



CAUTION!

The blocks may need to be adjusted to properly balance the engine. In the event of an unbalanced condition, loss of control and/or damage may occur to the engine and/or user.

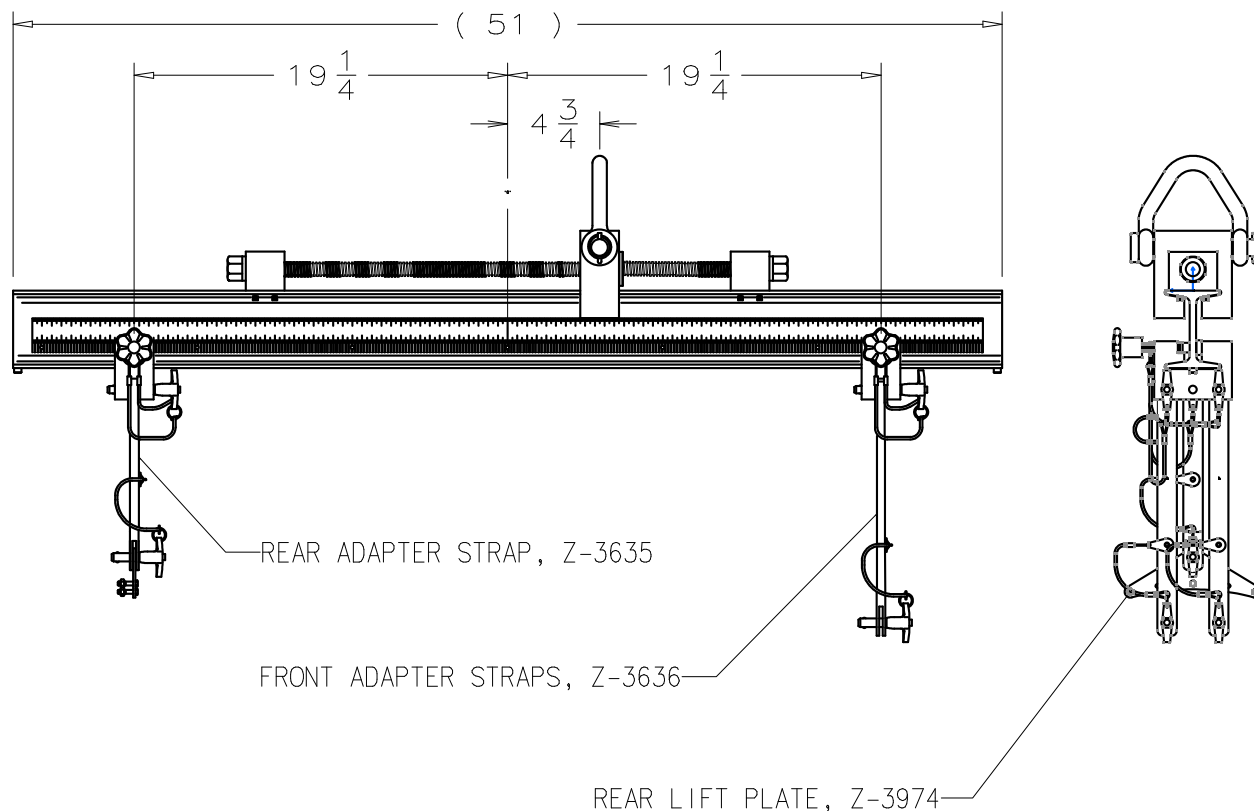


FIGURE 1
Typical Locations for PW530A Engine Sling Adapters

TRONAIR

04/2007 – Rev. 04

Model: K-2868
PW530A/PW545A Engine Adapter Sling Kit

MODELS: 08-0134-4000 and 08-0135-4000

ENGINE HANGING INSTRUCTIONS for the PW545A ENGINE:

1. Locate the slide blocks on the engine sling bar assembly with the front slide block located at $21 \frac{3}{4}$ inches forward of zero point. Locate the rear slide block at $16 \frac{3}{4}$ inches aft of zero point and position the lift point at $8 \frac{1}{4}$ inches forward of zero point. Ensure that all lifting straps have been securely installed into the slide blocks (**see Figure 2**). The strap kit retaining ring may be placed into one of the unused holes in either of the slide blocks for storage.
2. The sling is now ready to be installed onto the aircraft engine.
3. Lift engine sling slightly and check positioning of the lift points to ensure that the engine is balanced when lifting.



CAUTION!

The blocks may need to be adjusted to properly balance the engine. In the event of an unbalanced condition, loss of control and/or damage may occur to the engine and/or user.

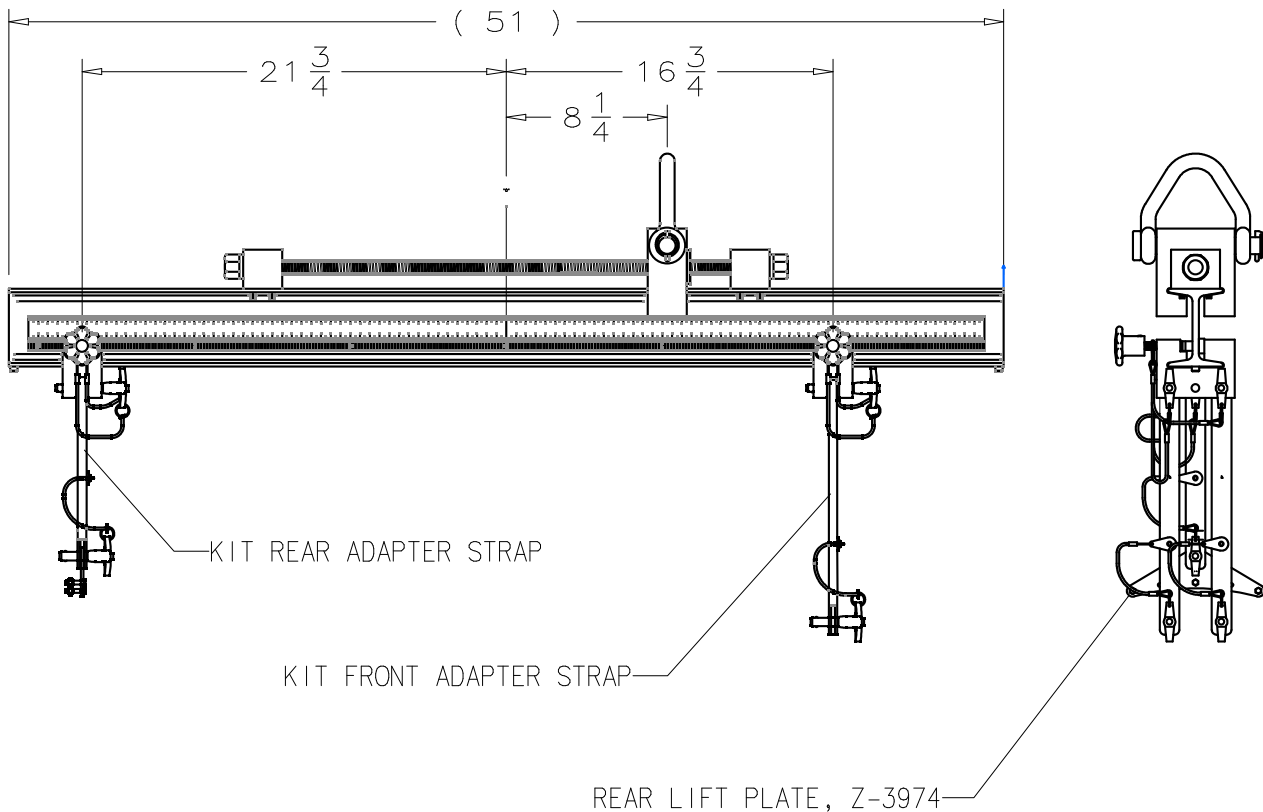


FIGURE 2
Typical locations for PW545A Engine Sling Adapter

TRONAIR

04/2007 – Rev. 04

Model: K-2868
PW530A/PW545A Engine Adapter Sling Kit

MODEL: 08-0130-4000

ENGINE HANGING INSTRUCTIONS FOR THE PW530A ENGINE:

1. Install front slide block in position "B" and lifting point slide block in position "3". Ensure that all lifting straps have been securely installed into the slide blocks (*see Figure 3*). For storage, the strap kit retaining ring may be placed into one of the unused holes in either of the slide blocks.
2. The sling is now ready to be installed onto the aircraft engine.
3. Lift engine sling slightly and check positioning of the lift points to ensure that the engine is balanced when lifting.



CAUTION!

The blocks may need to be adjusted to properly balance the engine. In the event of an unbalanced condition, loss of control and/or damage may occur to the engine and/or user.

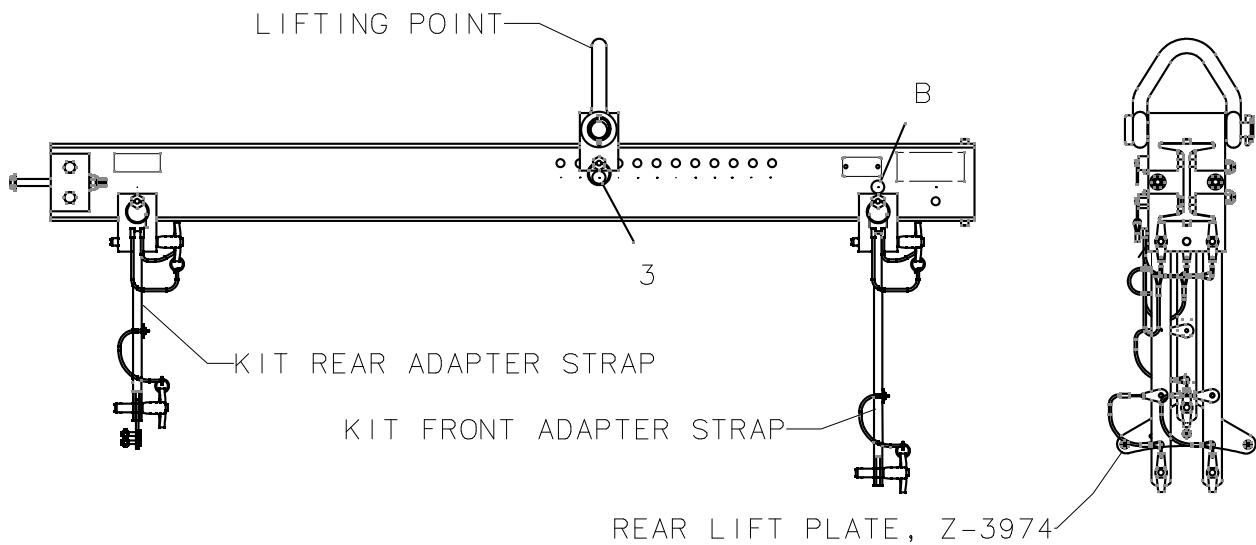


FIGURE 3
Typical Locations for PW530A Engine Sling Adapters

TRONAIR

04/2007 – Rev. 04

Model: K-2868
PW530A/PW545A Engine Adapter Sling Kit

MODEL: 08-0130-4000

ENGINE HANGING INSTRUCTIONS for the PW545A ENGINE:

1. Install front slide block in position "C" and lifting point slide block in position "9". Ensure that all lifting straps have been securely installed into the slide blocks (**see Figure 4**). For storage, the strap kit retaining ring may be placed into one of the unused holes in either of the slide blocks.
2. The sling is now ready to be installed onto the aircraft engine.
3. Lift engine sling slightly and check positioning of the lift points to ensure that the engine is balanced when lifting.



CAUTION!

The blocks may need to be adjusted to properly balance the engine. In the event of an unbalanced condition, loss of control and/or damage may occur to the engine and/or user.

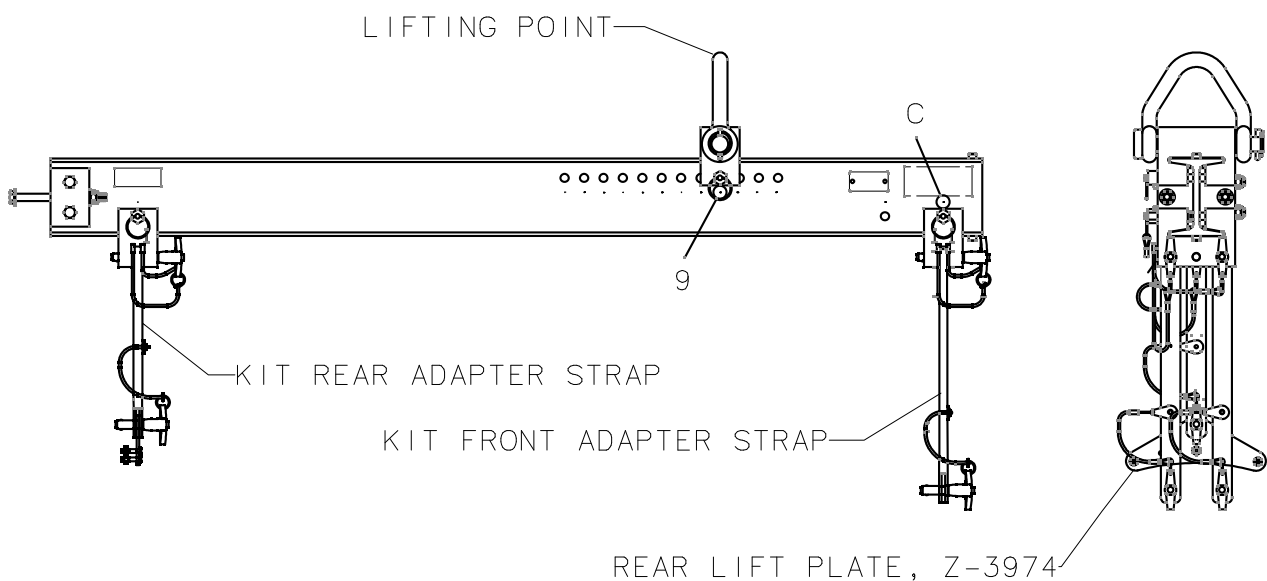


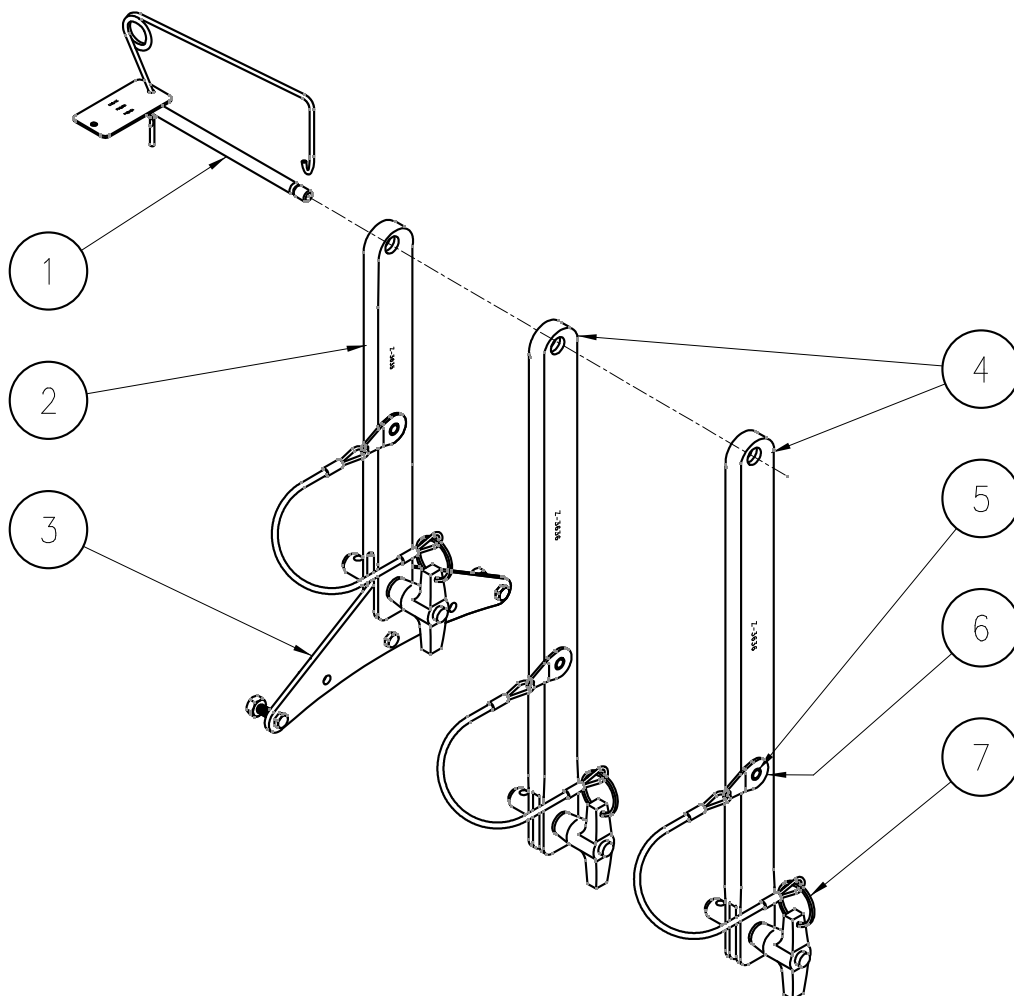
FIGURE 4
Typical Locations for PW545A Engine Sling Adapters

TRONAIR

04/2007 – Rev. 04

Model: K-2868
PW530A/PW545A Engine Adapter Sling Kit

Parts List



ITEM	PART NUMBER	DESCRIPTION	QTY
1	Z-3982-05	Assembly, Sling Adapter Pin	1
2	Z-3635	Assembly, Engine Strap	1
3	Z-3974	Assembly, Rear Lift	1
4	Z-3636	Assembly, Engine Strap	2
	K-2585	Kit, Ball Lok-T Pin Replacement; each consists of: (3 shown)	
5	G-1351-04	Rivet, 1/8 Open-end Steel	1
6	H-1026*07.0	Assembly, Lanyard	1
7	G-1310-0510	Pin, Ball Lok-T, 5/16" diameter x 1.0" long	1

TRONAIR

04/2007 – Rev. 04