



**Model: K-2909
CT7-5A
Engine Adapter Sling Kit**

**Parts List
With Illustrations**

05/2001 – Rev. 01

**** When ordering Replacement Parts/Kits, please specify Model, Color and Serial Number of your Unit.****

Tronair, Inc.

*1740 Eber Road
Holland, Ohio 43528-9794
USA*

Telephone: (419) 866-6301 • 800-426-6301

Fax: (419) 867-0634

Web Site: www.tronair.com E-mail: sales@tronair.com

Model: K-2909
CT7-5A Engine Adapter Sling Kit

This product can not be modified without the written approval of Tronair, Inc. Any modifications done without written approval voids all warranties and releases Tronair, Inc., its suppliers, distributors, employees, or financial institutions from any liability from consequences that may occur. Only Tronair OEM replacement parts shall be used.

The K-2909 Engine Sling Adapter Kit for the GE CT7-5A engine is to be used with the 08-0135-4000 engine sling assembly. Always follow the engine manufacturer's instructions for proper engine handling.

ENGINE HANGING INSTRUCTIONS FOR THE CT7-5A ENGINE:

1. Locate the slide blocks on the engine sling bar assembly with the front slide block located at 24 $\frac{3}{4}$ inches forward of zero point. Locate the rear slide block at 24 $\frac{3}{4}$ inches aft of zero point and position the lift point at the zero point. Ensure that all lifting straps have been securely installed into the slide blocks (**see Figure 1**). The strap kit retaining ring may be placed into one of the unused holes in either of the slide blocks for storage.
2. The sling is now ready to be installed onto the aircraft engine.
3. Lift engine sling slightly and check positioning of the lift points to ensure that the engine is balanced when lifting.



CAUTION!

The blocks may need to be adjusted to properly balance the engine. In the event of an unbalanced condition, loss of control and/or damage may occur to the engine and/or user.

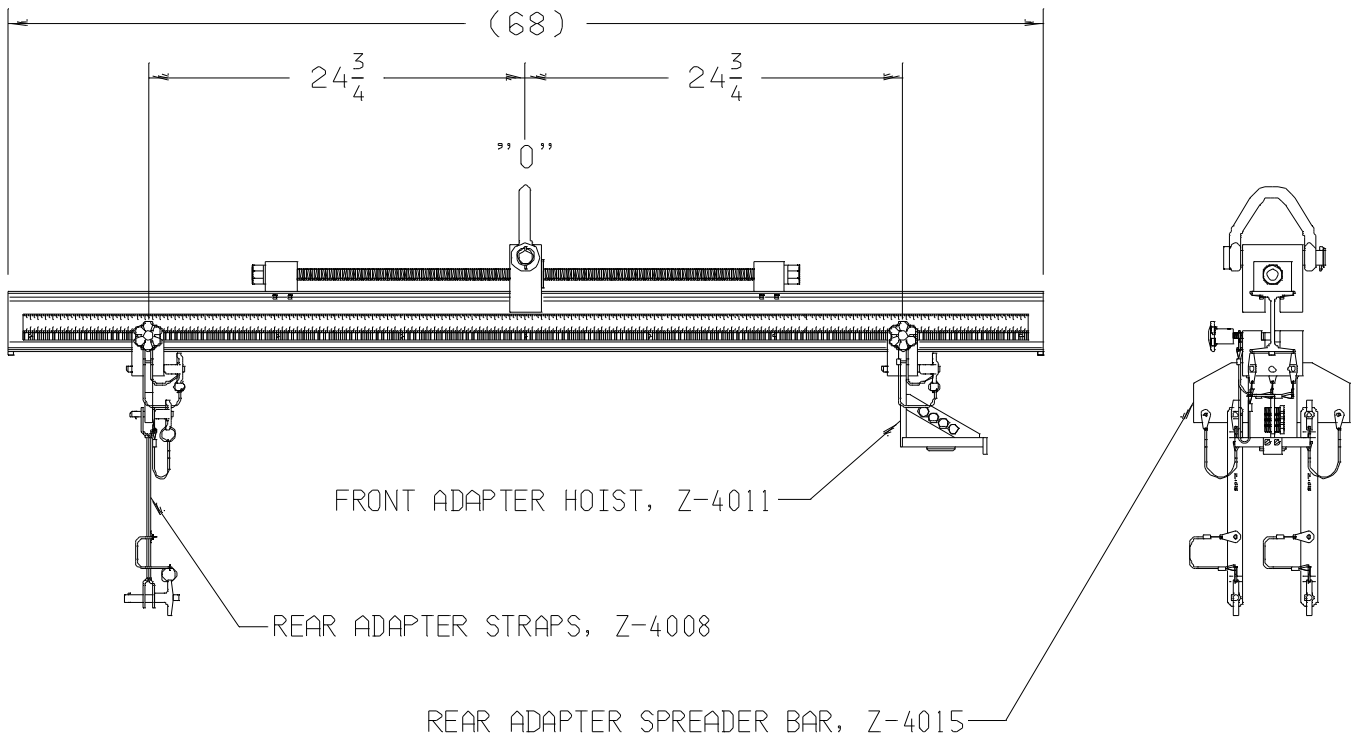
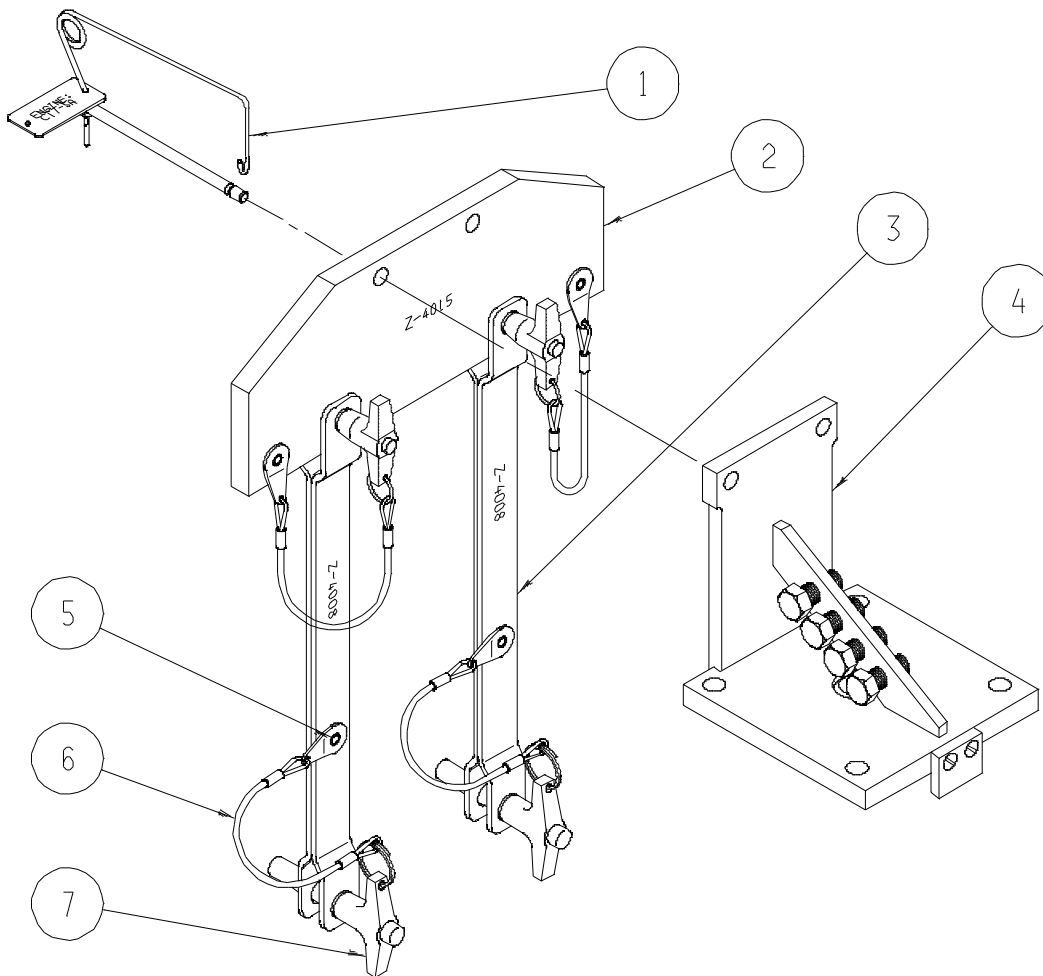


FIGURE 1
Typical locations for CT7-5A Engine Sling Adapters

Model: K-2909
CT7-5A Engine Adapter Sling Kit

Parts List



Replacement Parts

ITEM	PART NO.	DESCRIPTION	QTY
1	Z-3982-16.....	Assembly, Sling Adapter Pin	1
2	Z-4015.....	Assembly, Spreader Bar	1
3	Z-4008.....	Assembly, Engine Strap	2
4	Z-4011	Assembly, Engine Hoist	1

Replacement Kits

ITEM	PART NO.	DESCRIPTION	QTY
	K-2384	Kit, Ball Lok-T Pin Replacement; consists of:	
- Item 5	G-1351-04	Rivet, 1/8 Open-End Stl.....	1
- Item 6	H-1026*07.0	Assembly, Lanyard	1
- Item 7	G-1310-0815	Pin, Ball Lok-T, 1/2 diameter x 1.5" long	1