

PARTS LIST

MODEL: K-2909 CT7-5A Engine Adapter Sling Kit

June 1998

The K-2909 Engine Sling Adapter Kit for the GE CT7-5A engine is to be used with the 08-0135-4000 engine sling assembly. Always follow the engine manufacturer's instructions for proper engine handling.

ENGINE HANGING INSTRUCTIONS FOR THE CT7-5A ENGINE:

1. Locate the slide blocks on the engine sling bar assembly with the front slide block located at $24\frac{3}{4}$ inches right of zero point. Locate the rear slide block at $24\frac{3}{4}$ inches left of zero point and position the lift point at the zero point. Ensure that all lifting straps have been securely installed into the slide blocks (see Figure 1). The strap kit retaining ring may be placed into one of the unused holes in either of the slide blocks for storage.
2. The sling is now ready to be installed onto the aircraft engine.
3. Lift engine sling slightly and check positioning of the lift points to ensure that the engine is balanced when lifting.
4. Preliminary engine lift points supplied will be close to the actual lift points but may vary due to specific engine options changing the balance point of the engine. Adjust lift point as needed to obtain a level, properly balanced engine.

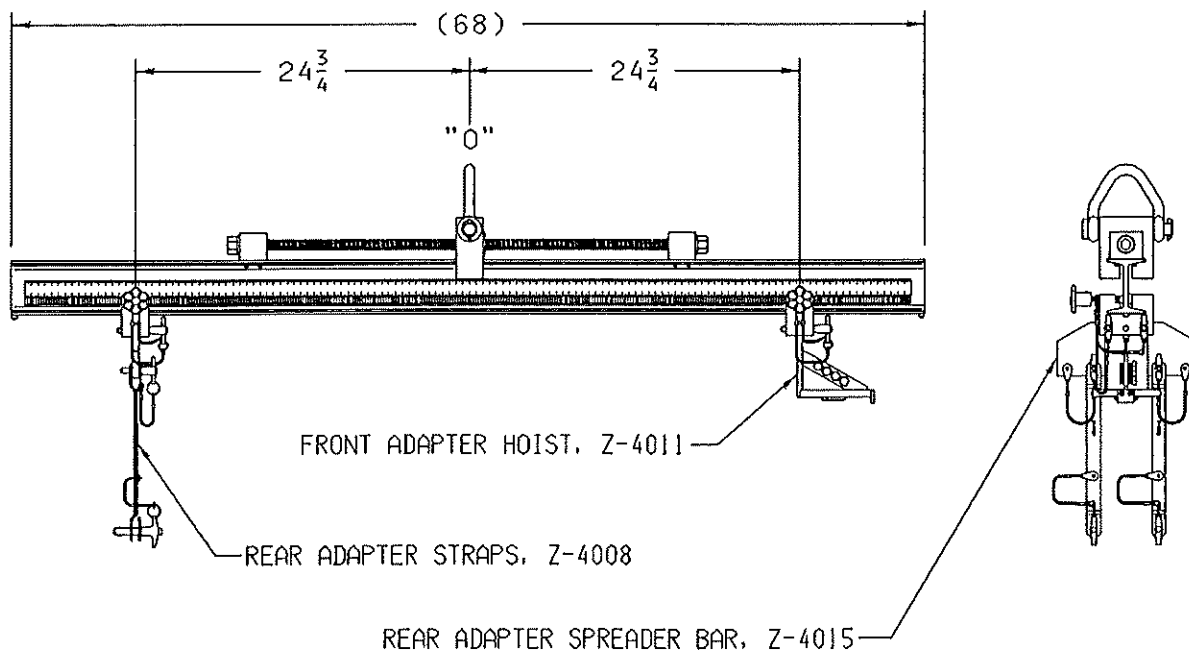


Figure 1 - Typical locations for CT7-5A Engine Sling Adapters

TRONAIR

South 1740 Eber Road • Holland, Ohio 43528-9794

Phone: (419) 866-6301 • 1-800-426-6301

Fax: (419) 867-0634

Website: www.tronair.com • Email: mail@tronair.com

PARTS LIST

MODEL: K-2909 CT7-5A Engine Adapter Sling Kit

June 1998

REPLACEMENT PARTS

| <u>ITEM</u> | <u>PART NUMBER</u> | <u>DESCRIPTION</u> | <u>QTY.</u> |
|-------------|--------------------|-----------------------------|-------------|
| 1 | Z-3982-16 | Assembly, Sling Adapter Pin | 1 |
| 2 | Z-4015 | Assembly, Spreader Bar | 1 |
| 3 | Z-4008 | Assembly, Engine Strap | 2 |
| 4 | Z-4011 | Assembly, Engine Hoist | 1 |

REPLACEMENT KITS

| <u>PART NUMBER</u> | <u>DESCRIPTION</u> | <u>QTY.</u> |
|--------------------|--|-------------|
| K-2384 | Replacement Ball Lok Pin Kit; consists of: | |
| - Item 5 | Pop Rivet | 1 |
| - Item 6 | Lanyard Assembly | 1 |
| - Item 7 | Ball Lok-T Pin, 1/2" Diameter x 1.5" long | 1 |

