



**Model: K-3152  
PW-306A  
Engine Adapter Kit**

**\*\*\***

**Installation Instructions  
and Parts List**

06/2005 – Rev. 02

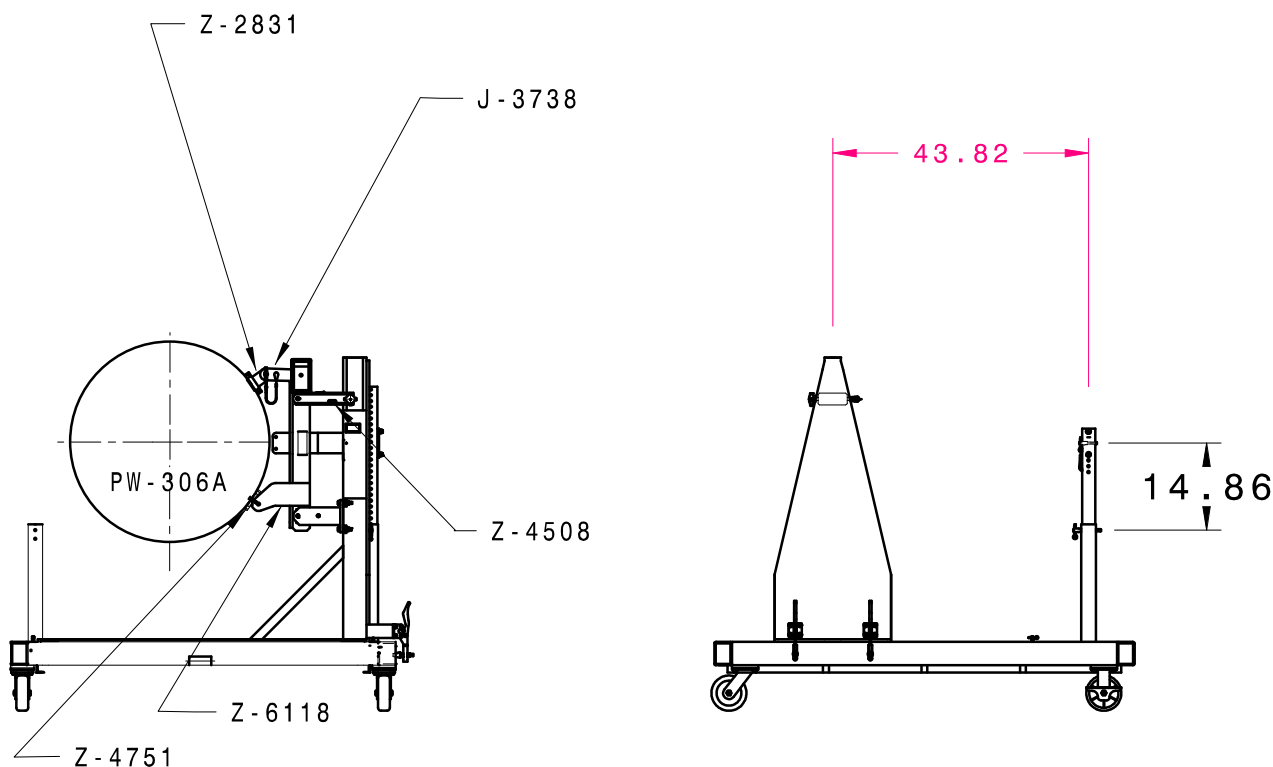
**K-3152**  
**PW-306A Engine Adapter Kit**

This product can not be modified without the written approval of Tronair, Inc. Any modifications done without written approval voids all warranties and releases Tronair, Inc., its suppliers, distributors, employees, or financial institutions from any liability from consequences that may occur. Only Tronair OEM replacement parts shall be used.

This Support Kit for Pratt Whitney PW-306A Engines is to be used with Tronair Model: 08-2034-0010 Engine Stand. The engine stand has multiple adjustments to accommodate the installation of various engines using specific engine adapter kits.

**ENGINE INSTALLATION INSTRUCTIONS:**

1. With the engine hung from the engine sling, remove the existing air frame mounts from the engine.
2. Attach the front engine mounting pads to the engine mounting locations. Use Z-2831 (Item 1, **Figure 2**) for upper mount using four (4) bolts supplied (Item 2, **Figure 2**). For lower mount, use Z-4751 (Item 13, **Figure 2**) using four (4) bolts supplied (Item 14, **Figure 2**).
3. Attach the rear bracket, Z-4508, to the rear attachment point on the engine (See **Figure 1**).
4. With supplied hardware, attach upper mount, J-3738, and forward mount, Z-6118, to the front engine mounting pads (See **Figure 1**).
5. Position the front support beam 43.82 inches from the rear support post (See **Figure 1**).
6. Position the height of the rear support up 15 inches (See **Figure 1**).
7. Position engine into the engine stand and attach rear bracket to engine stand.
8. Adjust final location of the front support beam and attach the front engine mounting pads to the engine stand.
9. Tighten the lock out screws on the front support beam.
10. The engine sling can now be removed for engine service.
11. Reverse Steps 2-9 to remove the engine from the stand.



**Figure 1**

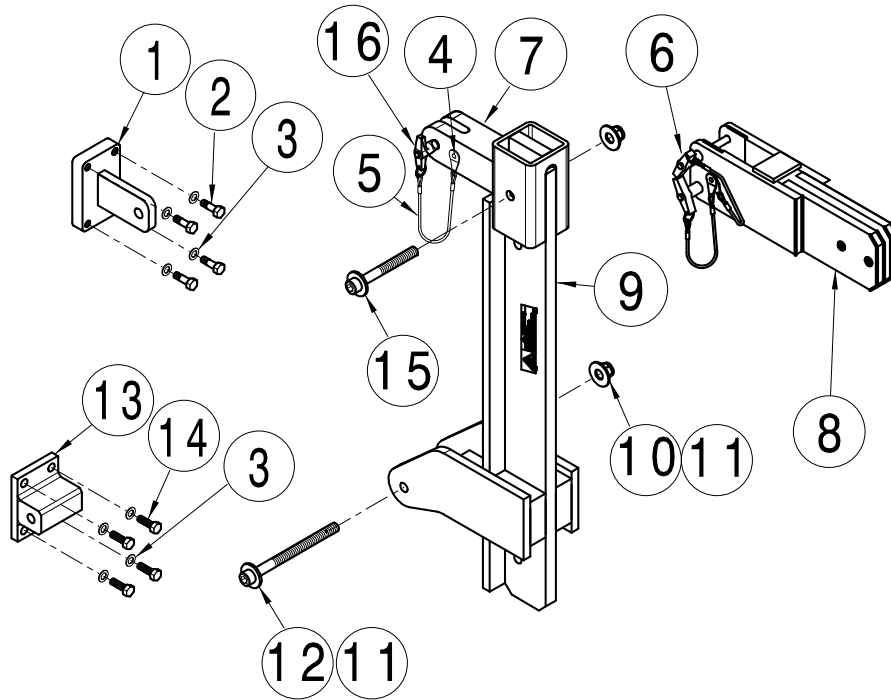
**TRONAIR**

06-2005 – Rev. 02

**K-3152**  
**PW-306A Engine Adapter Kit**

**Parts List**

When ordering replacement parts/kits, please specify model, serial number and color of your unit.



ITEM	PART NUMBER	DESCRIPTION	QTY
1	Z-2831	Weldment, PW-535 Mount	1
2	G-1455	Bolt, 7/16-20 Modified	4
3	G-1255-08	Washer, 7/16" diameter	8
4	G-1351-04	Rivet, 1/8 Open-End Steel	2
5	H-1026*07.0	Assembly, Lanyard	3
6	G-1310-0630	Pin, Ball Lok-T, 3/8" diameter x 3.0" long	2
7	J-3738	Bar, Upper Mount	1
8	Z-4507	Machining, Rear Bracket (PW-306A)	1
9	Z-6118	Weldment, Forward Mount	1
10	G-1202-1095	Stopnut, 1/2-20 Elastic	2
11	G-1250-1090N	Flatwasher, 1/2 Narrow	4
12	G-1151-109754	Screw, Hex Socket Head Cap, 1/2-20 x 5.5" long	1
13	Z-4751	Weldment, Lower Mount	1
14	G-1112-108112	Bolt, Hex Head, S.S. Grade 5, 7/16-20 x 1-1/4" long	4
15	G-1151-109740	Screw, Hex Head Cap, 1/2 - 20 x 4.0" long	1
16	G-1310-0831	Pin, Ball Lok-T, 1/2" diameter x 3.0" long	1

**TRONAIR**

06-2005 – Rev. 02