

**Model: K-3785
Impact Caster Kit**

**Installation Manual
With Illustrations**

01/2005 – Rev. 01

Includes Illustrated Parts List

REVISION
OR
01

DATE
01/2003
01/2005

TEXT AFFECTED
Original Release
Major Revision

TABLE OF CONTENTS

		<u>PAGE</u>
1.0	DESCRIPTION	1
2.0	INSTALLATION INSTRUCTIONS	1
2.1	TOWBARS MADE PRIOR TO 2003.....	1
2.1.1	Handle Removal.....	1
2.1.2	Skid Removal	1
2.1.3	Attaching Caster Plate Weldment to Towbar.....	1
2.1.4	Attaching Handle	2
2.1.5	Caster Attachment to Caster Plate Weldment.....	2
2.2	TOWBARS MADE FROM 2003 ON	2
2.2.1	Skid Removal	2
2.2.2	Attaching Caster Plate Weldment to Towbar.....	2
3.0	PROVISION OF SPARES	3
3.1	SPARE PARTS	3
3.2	PARTS LISTS & ILLUSTRATIONS	3
4.0	IN-SERVICE SUPPORT	3
5.0	GUARANTEES/LIMITATION OF LIABILITY	3

This product can not be modified without the written approval of Tronair, Inc. Any modifications done without written approval voids all warranties and releases Tronair, Inc., its suppliers, distributors, employees, or financial institutions from any liability from consequences that may occur. Only Tronair OEM replacement parts shall be used.

1.0 DESCRIPTION

You have purchased the K-3785 Impact Caster Kit for your Tronair Towbar. The kit includes the following:

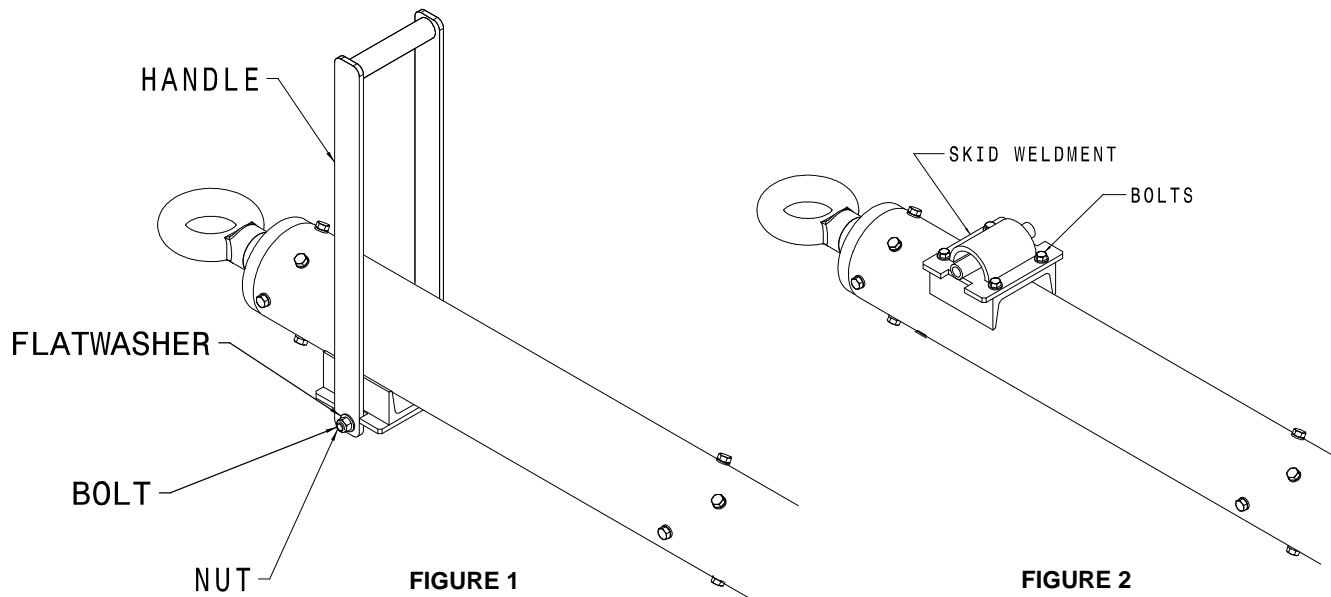
DESCRIPTION	QTY
Caster Plate Weldment	1
Impact Swivel Caster.....	2
Lockwasher, 1/4" diameter.....	2
Lockwasher, 5/16" diameter.....	8
Bolt, Hex Head, Grade 5, 5/16-24 x 1/2" long	8
Bolt, Hex Head, Grade 5, 1/4-20 x 3/4" long	4

2.0 INSTALLATION INSTRUCTIONS

2.1 TOWBARS MADE PRIOR TO 2003

2.1.1 Handle Removal

Remove nut and bolt holding handle onto your towbar. Do not discard these items; they will be reused. **Reference Figure 1.**

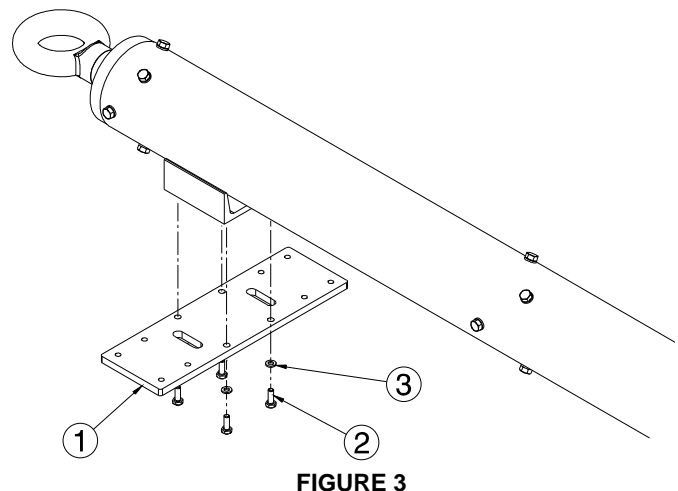


2.1.2 Skid Removal

Remove the (4) bolts and lockwashers holding the skid weldment to the towbar. Discard the bolts, lockwashers, and skid weldment. **Reference Figure 2.**

2.1.3 Attaching Caster Plate Weldment to Towbar

Using the (4) 1/4-20 x 3/4 inch long bolts (Item 2) and lockwashers (Item 3) provided in the kit, attach the caster plate weldment to the towbar. **Reference Figure 3.**



2.1 TOWBARS MADE PRIOR TO 2003 (continued)

2.1.4 Attaching Handle

Insert handle removed in 2.1 into the slots in the caster plate weldment. Using the bolt and nut removed in 2.1, attach handle to the skid weldment. **Reference Figure 4.**

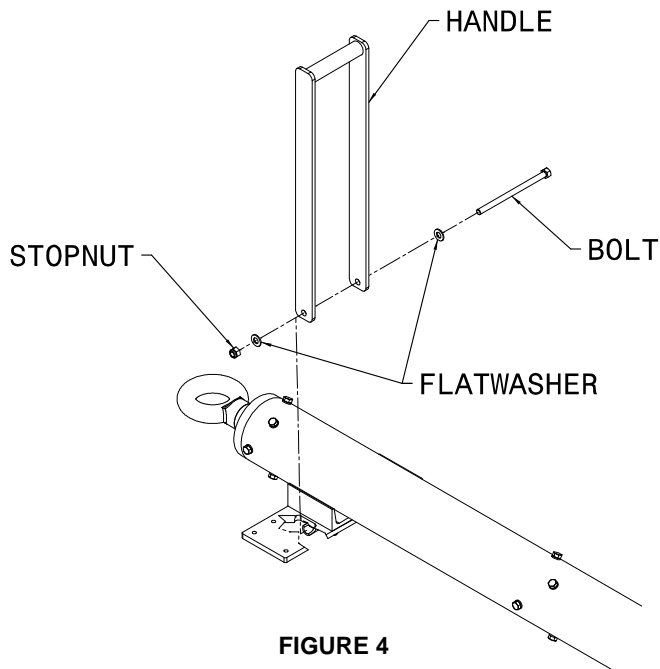


FIGURE 4

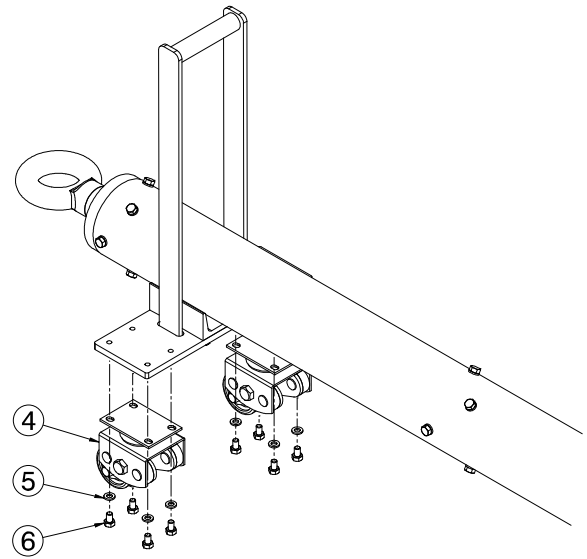


FIGURE 5

2.1.5 Caster Attachment to Caster Plate Weldment

Attach the two casters (Item 4) to the caster plate weldment, using the (8) 5/16-24 x ½ inch long bolts (Item 6) and (8) 5/16 inch lockwashers (Item 5) provided in the kit. **Reference Figure 5.**

2.2 TOWBARS MADE FROM 2003 ON

2.2.1 Skid Removal

Remove the (4) bolts and lockwashers holding the skid assembly to the towbar. Discard the bolts, lockwashers, and skid assembly. **Reference Figure 6.**

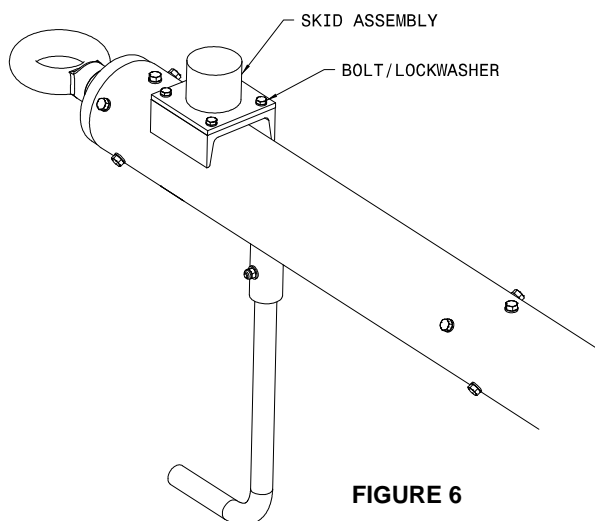


FIGURE 6

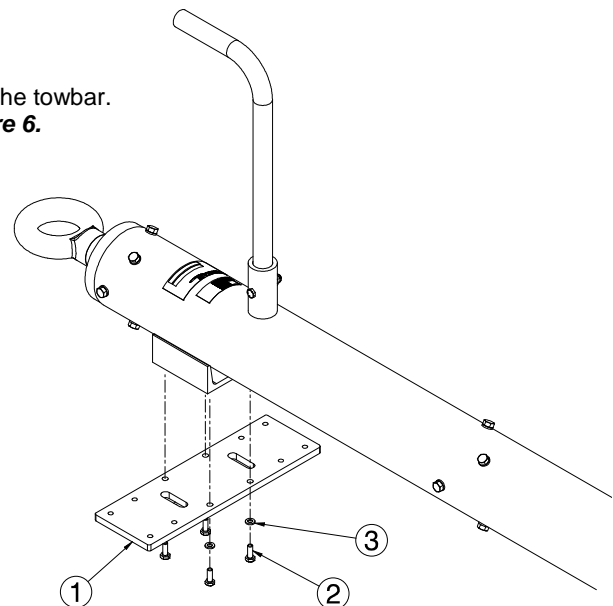


FIGURE 7

2.2.2 Attaching Caster Plate Weldment to Towbar

Using the (4) ¼ - 20 x ¾ inch long bolts (Item 2) and lockwashers (Item 3) provided in the kit, attach the caster plate weldment (Item 1) to the towbar. **Reference Figure 7.**

2.2 Towbars made from 2003 on continued on following page.

2.2 TOWBARS MADE FROM 2003 ON *(continued)*

2.2.3 Caster Attachment to Caster Plate Weldment

Attach the two casters (Item 4) to the caster plate weldment, using the (8) 5/16 – 24 x ½ inch long bolts (Item 6) and (8) 5/16 inch lockwashers (Item 5) provided in the kit. **Reference Figure 8.**

3.0 PROVISION OF SPARES

3.1 SPARE PARTS

Spare parts may be obtained from the manufacturer:

TRONAIR, Inc.

1740 Eber Road

Holland, Ohio 43528-9794 USA

Telephone: (419) 866-6301 or 800-426-6301

Fax: (419) 867-0634

E-mail: sales@tronair.com

Website: www.tronair.com

3.2 PARTS LISTS & ILLUSTRATIONS

Reference the following page for Replacement Parts and Kits available.

4.0 IN-SERVICE SUPPORT

Contact Tronair for technical services and information.

5.0 GUARANTEES/LIMITATION OF LIABILITY

Tronair products are warranted to be free of manufacturing or material defects for a period of one year after shipment to the original customer. This is solely limited to the repair or replacement of defective components. This warranty does not cover the following items:

- Parts required for normal maintenance
- Parts covered by a component manufacturers warranty
- Replacement parts have a 90-day warranty from date of shipment

If you have a problem that may require service, contact Tronair immediately. Do not attempt to repair or disassemble a product without first contacting Tronair, any action may affect warranty coverage. When you contact Tronair be prepared to provide the following information:

- Product Model Number
- Product Serial Number
- Description of the problem

If warranty coverage is approved, either replacement parts will be sent or the product will have to be returned to Tronair for repairs. If the product is to be returned, a Return Material Authorization (RMA) number will be issued for reference purposes on any shipping documents. Failure to obtain a RMA in advance of returning an item will result in a service fee. A decision on the extent of warranty coverage on returned products is reserved pending inspection at Tronair. Any shipments to Tronair must be shipped freight prepaid. Freight costs on shipments to customers will be paid by Tronair on any warranty claims only. Any unauthorized modification of the Tronair products or use of the Tronair products in violation of cautions and warnings in any manual (including updates) or safety bulletins published or delivered by Tronair will immediately void any warranty, express or implied.

The obligations of Tronair expressly stated herein are in lieu of all other warranties or conditions expressed or implied. **Any unauthorized modification of the Tronair products or use of the Tronair products in violations of cautions and warnings in any manual (including updates) or safety bulletins published or delivered by Tronair will immediately void any warranty, express or implied and Tronair disclaims any and all liability for injury (WITHOUT LIMITATION and including DEATH), loss or damage arising from or relating to such misuse.**

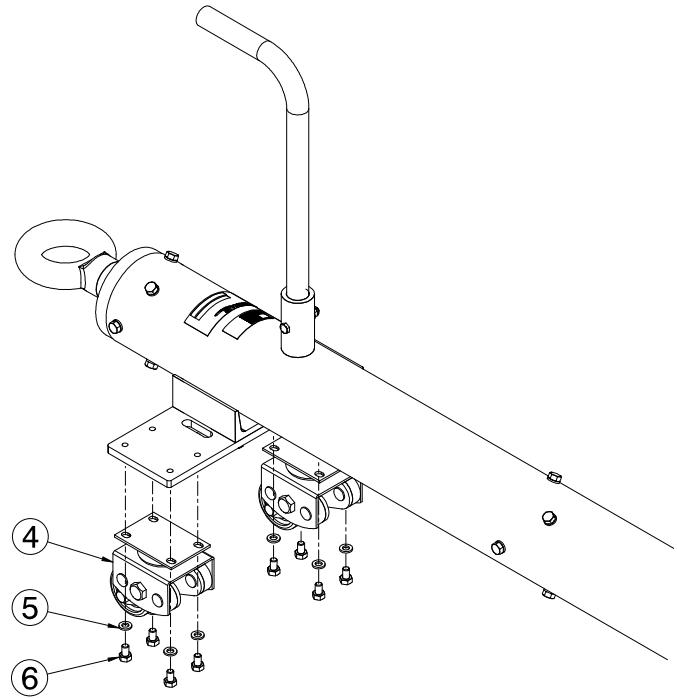
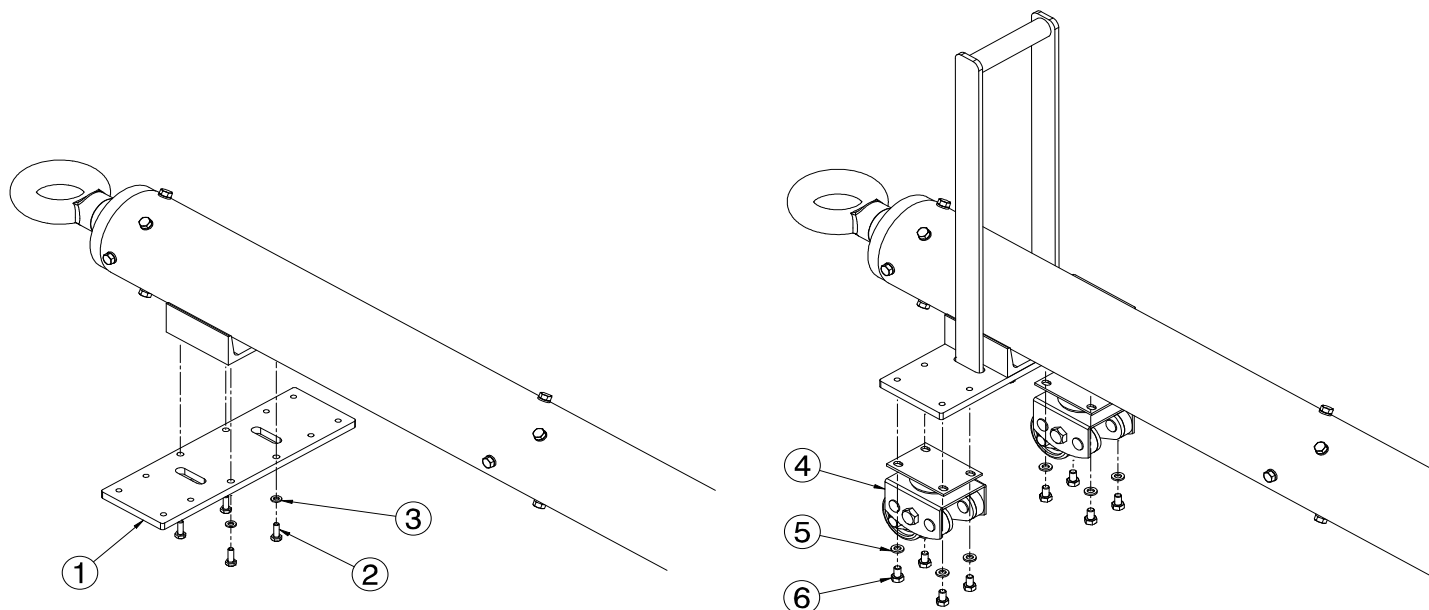


FIGURE 8

Parts List

When ordering replacement parts/kits, please specify model, serial number and color of your unit.



Item	Part Number	Description	Qty
1	Z-5711-01	Weldment, Caster Plate	1
2	G-1100-105006	Bolt, Hex Head, Grade 5, 1/4-20 x 3/4" long	4
3	G-1251-1050R	Lockwasher, 1/4 Regular	4
4	U-1111	Caster, Impact Swivel	2
5	G-1251-1060R	Lockwasher, 5/16" Regular	8
6	G-1100-106504	Bolt, Hex Head, Grade 5, 5/16-20 x 3/4" long	8