

K-3842 - Kit, PW-306C Engine Adapter

This product can not be modified without the written approval of Tronair, Inc. Any modifications done without written approval voids all warranties and releases Tronair, Inc., its suppliers, distributors, employees, or financial institutions from any liability from consequences that may occur. Only Tronair OEM replacement parts shall be used.



This Support Kit for Pratt Whitney PW-306C Engines is to be used with Tronair Model: 08-2034-0010 Engine Stand. The engine stand has multiple adjustments to accommodate the installation of various engines using specific engine adapter kits.

ENGINE INSTALLATION INSTRUCTIONS:

1. With the engine hung from the engine sling, remove the existing air frame mounts from the engine.
2. Attach the front engine mounting pads to the engine mounting locations. Use Z-2831 (Item 1, **Figure 2**) for upper mount using four (4) bolts supplied (Item 2, **Figure 2**). For lower mount, use Z-4751 (Item 13, **Figure 2**) using four (4) bolts supplied (Item 14, **Figure 2**).
3. Attach the rear bracket, Z-5888, to the rear attachment point on the engine (See **Figure 1**).
4. With supplied hardware, attach upper mount, Z-3738, and forward mount, Z-6118, to the front engine mounting pads (See **Figure 1**).
5. Position the front support beam 43.82 inches from the rear support post (See **Figure 1**).
6. Position the height of the rear support up 15 inches (See **Figure 1**).
7. Position engine into the engine stand and attach rear bracket to engine stand.
8. Adjust final location of the front support beam and attach the front engine mounting pads to the engine stand.
9. Tighten the lock out screws on the front support beam.
10. The engine sling can now be removed for engine service.
11. Reverse Steps 2-9 to remove the engine from the stand.

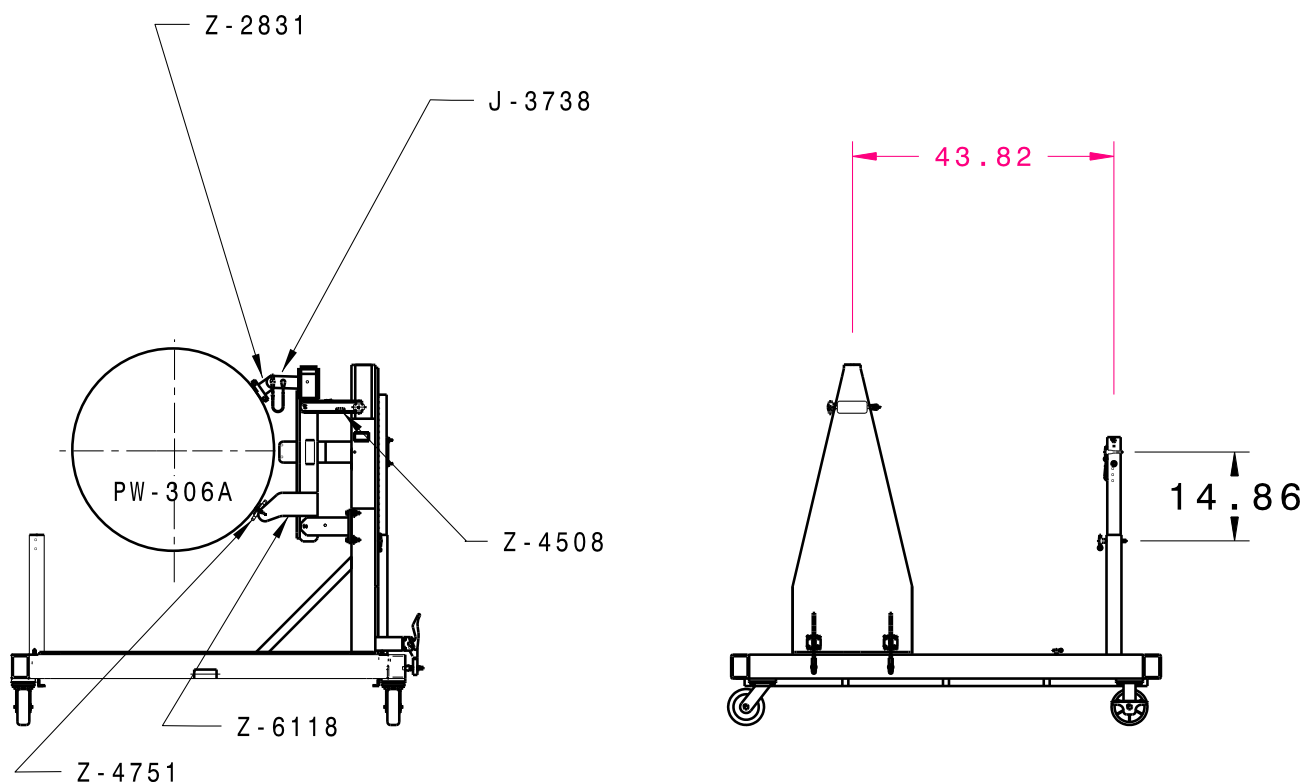
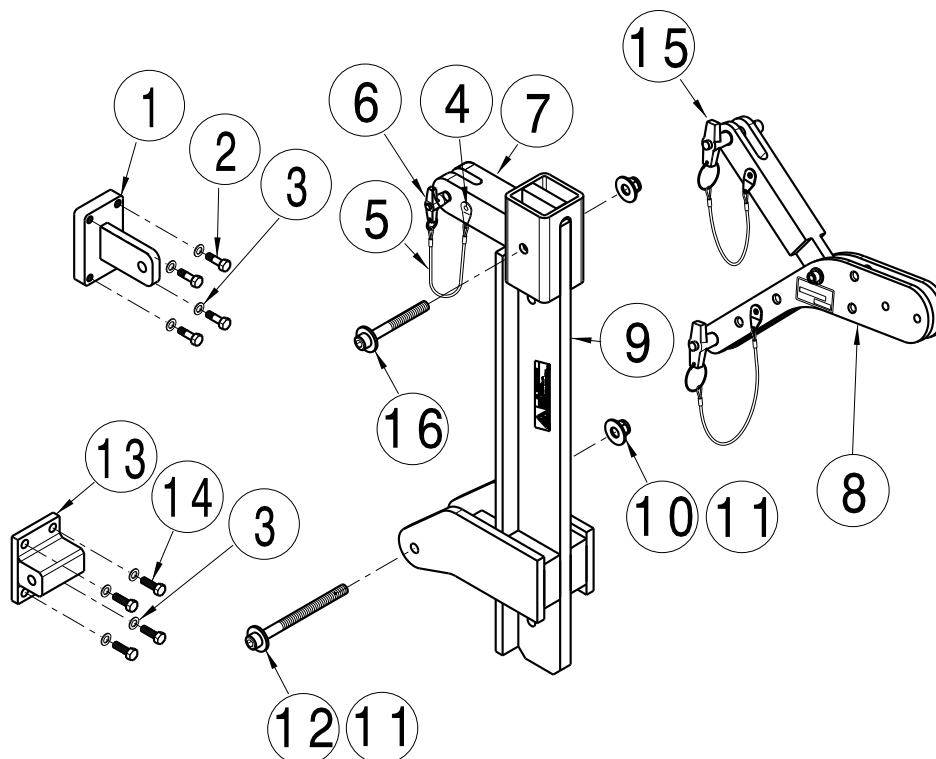


Figure 1

Parts List

When ordering Replacement Parts/Kits, please specify Model, Color and Serial Number of your Unit



Item	Part Number	Description	Qty
1	Z-2831	Weldment, Engine Mount	1
2	G-1455	Bolt, 7/16-20 Modified	4
3	G-1255-08	Washer, 7/16" diameter	8
4	G-1351-04	Rivet, 1/8 Open-End Steel	3
5	H-1026*07.0	Assembly, Lanyard	3
6	G-1310-0831	Pin, Ball Lok-T, 1/2" diameter x 3.1" long	1
7	J-3738	Bar, Upper Mount	1
8	Z-5888	Machining, Rear Bracket	1
9	Z-6118	Weldment, Forward Mount	1
10	G-1202-1095	Stopnut, 1/2-20 Elastic	2
11	G-1250-1090N	Flatwasher, 1/2 Narrow	4
12	G-1151-109754	Screw, Hex Socket Head Cap, 1/2 - 20 x 5.5" long	1
13	Z-4751	Weldment, Lower Mount	1
14	G-1112-108112	Bolt, Hex Head, S.S. Grade 5, 7/16-20 x 1-1/4" long	4
15	G-1310-1015	Pin, 5/8 x 1.5" long, Ball Lok-T	2
16	G-1151-109740	Screw, Hex Socket Head Cap, 1/2 - 20 x 4.0" long	1

DECLARATION of CONFORMITY

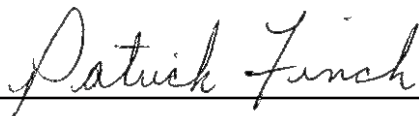
The design, development and manufacture is in accordance with European Community guidelines

K-3842
Engine Adapter
PW306C

Relevant draft complied with by the machinery:
EN ISO 12100-1

Relevant standards complied with by the machinery:
EN ISO 12100-1
EN 1915-1:2001 (5.20)

Identification of person empowered to sign on behalf of the Manufacturer:



Quality Assurance Representative

The Tronair Family of Ground Support Equipment and cloud based EBis GSE Fleet Management



A collage of various Tronair industrial equipment. The items include: a dump truck with a Tronair logo; a utility vehicle labeled 'EAGLE TT-8 AWD'; a trailer with a Tronair logo; a generator labeled '28.5 DC TRONAIR'; a nitrogen system with two cylinders and a pump; a large industrial unit with a control panel and a fan; and a smaller unit with a fan. The equipment is shown in various configurations and settings.

The Tronair Family of GSE Product Lines

UNPARALLELED RANGE OF PRODUCTS FOR BUSINESS, COMMERCIAL AND MILITARY AIRCRAFT

LIFTING & SHORING (ATA-7)

Hydraulic Tripod Jacks
Axle Jacks
Jack Test Equipment
Stabilizing Stands & Alarms
Aircraft Recovery Dollies

LEVELING & WEIGHING (ATA-8)

Aircraft Weigh Equipment

TOWING AND TAXIING (ATA-9)

Towbar Systems
Tow Vehicles & Tractors

PARKING & MOORING (ATA-10)

Chocks & Covers

SERVICING (ATA-12)

Multi-Purpose Carts
Hydraulic & Engine Oil Servicing
& Test Equipment
Lavatory Servicing Carts
Potable Water Transport Carts
Oxygen & Nitrogen Carts
Oxygen & Nitrogen Boosters

AIR CONDITIONING (ATA-21)

Air Conditioning Equipment
Coolant System Fill/Drain Carts
Cabin Pressurization Test Units

ELECTRICAL (ATA-24)

Ground Power Units
Battery Charger/Analyzer

FUEL (ATA-28)

Fuel Transfer Cart
Fuel Tools

HYDRAULIC POWER (ATA-29)

Hydraulic Power Units
Ram Air Turbine (RAT)
Hydraulic Coupling Hose Adaptors

ICE & RAIN PROTECTION (ATA-30)

Deicer Carts

AIRCRAFT TOOLING

Designed to your Specifications

LANDING GEAR (ATA-32)

Beadbreakers
Dollies - Wheel & Brake
Service Tools
Strut Service Carts
Regulators, Adaptors,
Connectors & Gauges

FUSELAGE (ATA-53)

Lifts, Cranes & Hoists
Maintenance Platforms
Access Stands
Docking Systems

PROPELLERS (ATA-61)

Propeller Stands/Slings/Tools

POWER PLANT (ATA-71)

Engine Compressor Washers
Engine Hoists, Slings & Stands

CLOUD BASED FLEET MGT.

Manage your Repair Station,
Multi Location Jet Center or
Small Operation



www.tronair.com

www.columbusjack.com | www.daeind.com | www.datcomedia.com | www.eagletugs.com | www.malabar.com

Sales Offices: USA • Asia/China • Australia/New Zealand/Singapore • Europe/Middle East/Africa

Tronair, Inc. • 1 Air Cargo Pkwy East • Swanton, OH 43558, USA
Phone: 419-866-6301 | Toll Free: 1-800-426-6301 | Email: sales@tronair.com