



**Model: K-4071**

**Kit, PW-615F  
Engine Adapter To  
Connect To Lord Mounts**

**\*\*\***

**Illustrated Parts List**

10/2006 - Rev. OR

***Tronair, Inc.***

*1740 Eber Road  
Holland, Ohio 43528-9794  
USA*

*Telephone: (419) 866-6301 • 800-426-6301*

*Fax: (419) 867-0634*

**Web Site: [www.tronair.com](http://www.tronair.com) E-mail: [sales@tronair.com](mailto:sales@tronair.com)**

**K-4071**  
**Kit, PW-615F Engine Adapter Kit To Connect To Lord Mounts**

This product can not be modified without the written approval of Tronair, Inc. Any modifications done without written approval voids all warranties and releases Tronair, Inc., its suppliers, distributors, employees, or financial institutions from any liability from consequences that may occur.

This Support Kit for Pratt Whitney PW-615F Engine is to be used with Tronair Model: 08-2021-0000 Engine Stand. Both arm assemblies must be used together in the stand for proper engine mounting.

**ENGINE SUPPORT INSTALLATION INSTRUCTIONS:**

1. Attach the weldment arm (Item 1) assembly to the gear box shaft coupler with supplied bolts.
2. Attach the weldment arm (Item 1) to coupler on pillow block side of the engine stand.
3. Assure that all nuts and bolts (not shown) are secure before placing an engine in the stand.

**ENGINE INSTALLATION INSTRUCTIONS:**

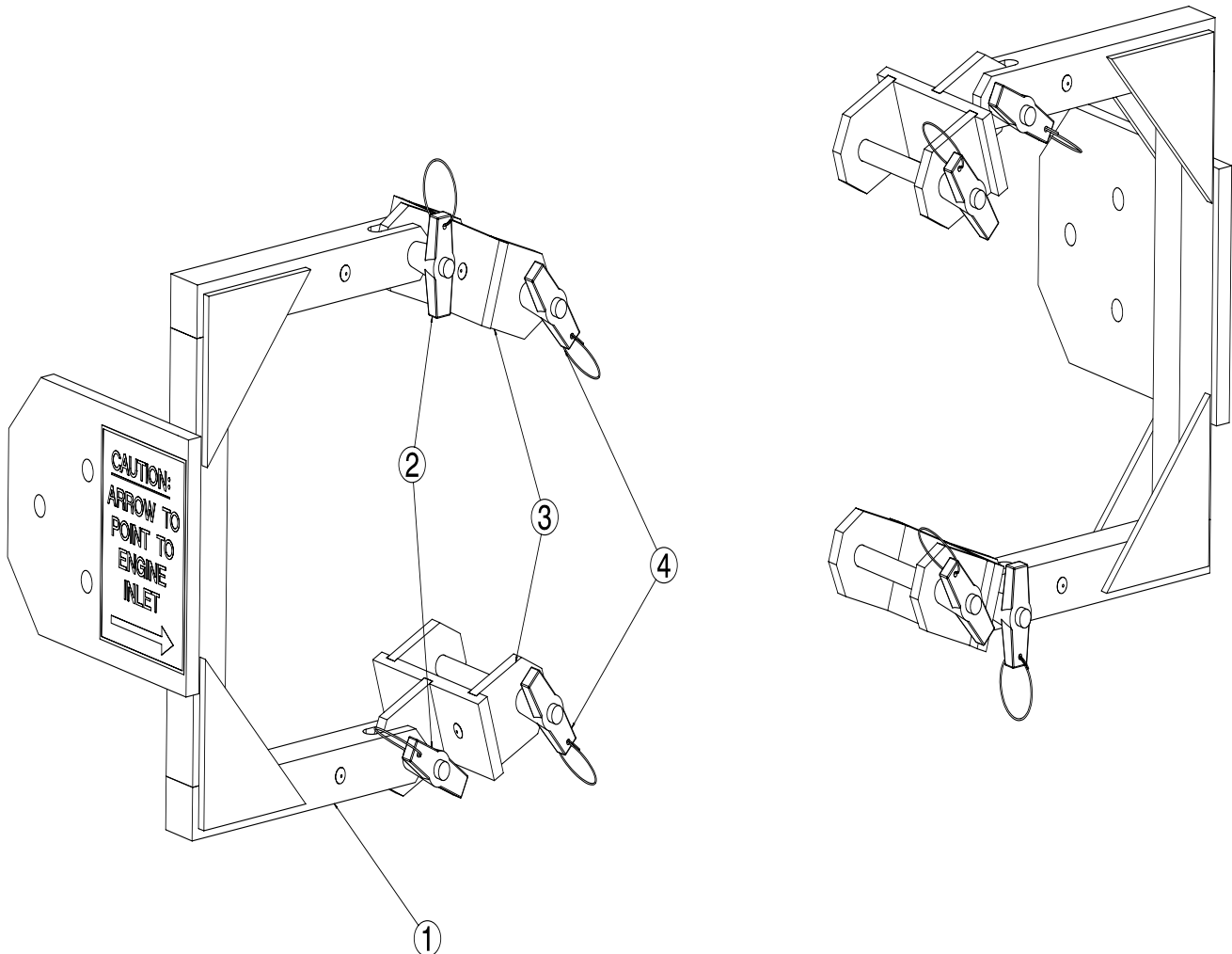
1. Attach the four (4) engine mounts (Item 3) onto the engines Lord mounts with pin (Item 4).
2. Lower the engine into the engine stand and align holes in engine mounts (Item 3) with the holes in the engines mounting arm (Item 1) and pin mounts to the arms (Item 2).
3. The engine installation is now complete.
4. To remove engine, reverse the above process.

**K-4071**  
**Kit, PW-615F Engine Adapter Kit To Connect To Lord Mounts**

## Parts List

\*\* WHEN ORDERING REPLACEMENT PARTS/KITS, PLEASE SPECIFY MODEL & SERIAL NUMBER OF YOUR UNIT.\*\*

### REPLACEMENT PARTS



ITEM	PART NUMBER	DESCRIPTION	QTY
1 .....	Z-6418 .....	Weldment, Arm .....	1
2 .....	G-1310-0815 .....	Pin, Ø ½ x 1.5 Long .....	2
3 .....	Z-6416 .....	Weldment, Engine Mount .....	2
4 .....	G-1310-0845 .....	Pin, Ø ½ x 4.5 Long .....	2
Not Shown .....	G-1100-109520 .....	Bolt, ½ -20 Hex Head Grade 5 .....	3
Not Shown .....	G-1250-1090N .....	Flatwasher, ½ Narrow .....	3
Not Shown .....	G-1202-1095 .....	Stopnut, ½ -20 Elastic .....	3

**TRONAIR**

10/2006 - Rev. OR