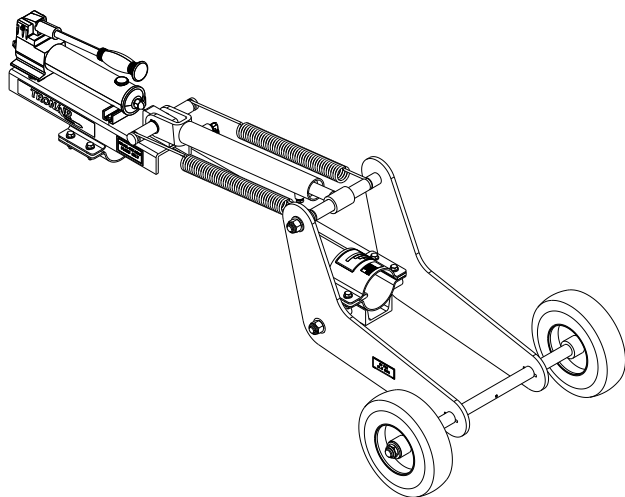




# OPERATION & SERVICE MANUAL



## **Model: K-4076 Landing Gear (4.5") Assembly Kit**



03/2009 – Rev. 01

REVISION  
01

DATE  
03/2009

TEXT AFFECTED  
Original release

This product can not be modified without the written approval of Tronair, Inc. Any modifications done without written approval voids all warranties and releases Tronair, Inc., its suppliers, distributors, employees, or financial institutions from any liability from consequences that may occur. Only Tronair OEM replacement parts shall be used.

## 1.0 DESCRIPTION

K-4076 Landing Gear Assembly Kit incorporates the following features:

- Adjustable location on towbar
- Pneumatic tires
- Hydraulic system

## 2.0 USAGE

The K-4076 Landing Gear Assembly Kit is used in conjunction with the following applications:

|              |              |              |              |              |
|--------------|--------------|--------------|--------------|--------------|
| 01-1269-0020 | 01A1269-0020 | 01-1270-0010 | 01A1270-0010 |              |
| 01-1274-0030 | 01A1274-0030 | 01-1281-0010 | 01A1281-0010 | 01A1302-0000 |



### CAUTION!

**Use extreme caution when installing landing gear onto the towbar.  
Personal injury and/or damage to landing gear may result.**

## 3.0 SPECIFICATIONS

Weight ..... 61 lbs (27.7 kg)  
Length ..... 58 ½ in (148.6 cm)  
Width ..... 23 ¾ in (60.3 cm)  
Height ..... 18 9/16 in (47.1 cm) collapsed  
Lift ..... 11 in (27.94cm) approximate

## 4.0 MAINTENANCE



Inspect the pump for hydraulic leaks. Replace seals if any leaks exist. Contact Tronair or your Tronair distributor for replacement.



Inspect hydraulic fittings and hose for leaks. If any hydraulic leaks exist, contact Tronair or your Tronair distributor for replacement.



Inspect cylinder for hydraulic leaks. If any hydraulic leaks exist, contact Tronair or your Tronair distributor for replacement seals.



Check extension springs. Extend cylinder to full stroke and open relief valve on pump. The extension springs should retract the cylinder completely. If not, contact Tronair or your Tronair distributor for replacement.



Inspect cylinder mounting pins for bending or damage. Ensure the springs are engaged on them. If pins are bent or damaged, contact Tronair or your Tronair distributor for replacement.



Check the towbar undercarriage for unusual wear or damage. Inflate the pneumatic tires to the proper pressure; repair any air leaks or replace if needed. Ensure the wheels can rotate freely, and wheel rims and tire axle are not bent. Ensure mounting fasteners are tight and not missing. Tighten or replace as required. Grease tire axle every 90 days.



Inspect towbar undercarriage side plates for bending or damage. If any exist, contact Tronair or your Tronair distributor for replacement.

## 5.0 PROVISION OF SPARES

### 5.1 SPARE PARTS

Spare parts may be obtained from the manufacturer:

**TRONAIR, Inc.**  
1 Air Cargo Pkwy East  
Swanton, Ohio 43558 USA

Telephone: (419) 866-6301 or 800-426-6301  
Fax: (419) 867-0634  
E-mail: [sales@tronair.com](mailto:sales@tronair.com)  
Website: [www.tronair.com](http://www.tronair.com)

### 5.2 PARTS LISTS & ILLUSTRATIONS

Reference the following pages for Replacement Parts and Kits available.

## 6.0 IN-SERVICE SUPPORT

Contact Tronair for technical services and information.

## 7.0 GUARANTEES/LIMITATION OF LIABILITY

Tronair products are warranted to be free of manufacturing or material defects for a period of one year after shipment to the original customer. This is solely limited to the repair or replacement of defective components. This warranty does not cover the following items:

- a) Parts required for normal maintenance
- b) Parts covered by a component manufacturers warranty
- c) Replacement parts have a 90-day warranty from date of shipment

If you have a problem that may require service, contact Tronair immediately. Do not attempt to repair or disassemble a product without first contacting Tronair, any action may affect warranty coverage. When you contact Tronair be prepared to provide the following information:

- a) Product Model Number
- b) Product Serial Number
- c) Description of the problem

If warranty coverage is approved, either replacement parts will be sent or the product will have to be returned to Tronair for repairs. If the product is to be returned, a Return Material Authorization (RMA) number will be issued for reference purposes on any shipping documents. Failure to obtain a RMA in advance of returning an item will result in a service fee. A decision on the extent of warranty coverage on returned products is reserved pending inspection at Tronair. Any shipments to Tronair must be shipped freight prepaid. Freight costs on shipments to customers will be paid by Tronair on any warranty claims only. Any unauthorized modification of the Tronair products or use of the Tronair products in violation of cautions and warnings in any manual (including updates) or safety bulletins published or delivered by Tronair will immediately void any warranty, express or implied.

The obligations of Tronair expressly stated herein are in lieu of all other warranties or conditions expressed or implied. **Any unauthorized modification of the Tronair products or use of the Tronair products in violations of cautions and warnings in any manual (including updates) or safety bulletins published or delivered by Tronair will immediately void any warranty, express or implied and Tronair disclaims any and all liability for injury (WITHOUT LIMITATION and including DEATH), loss or damage arising from or relating to such misuse.**

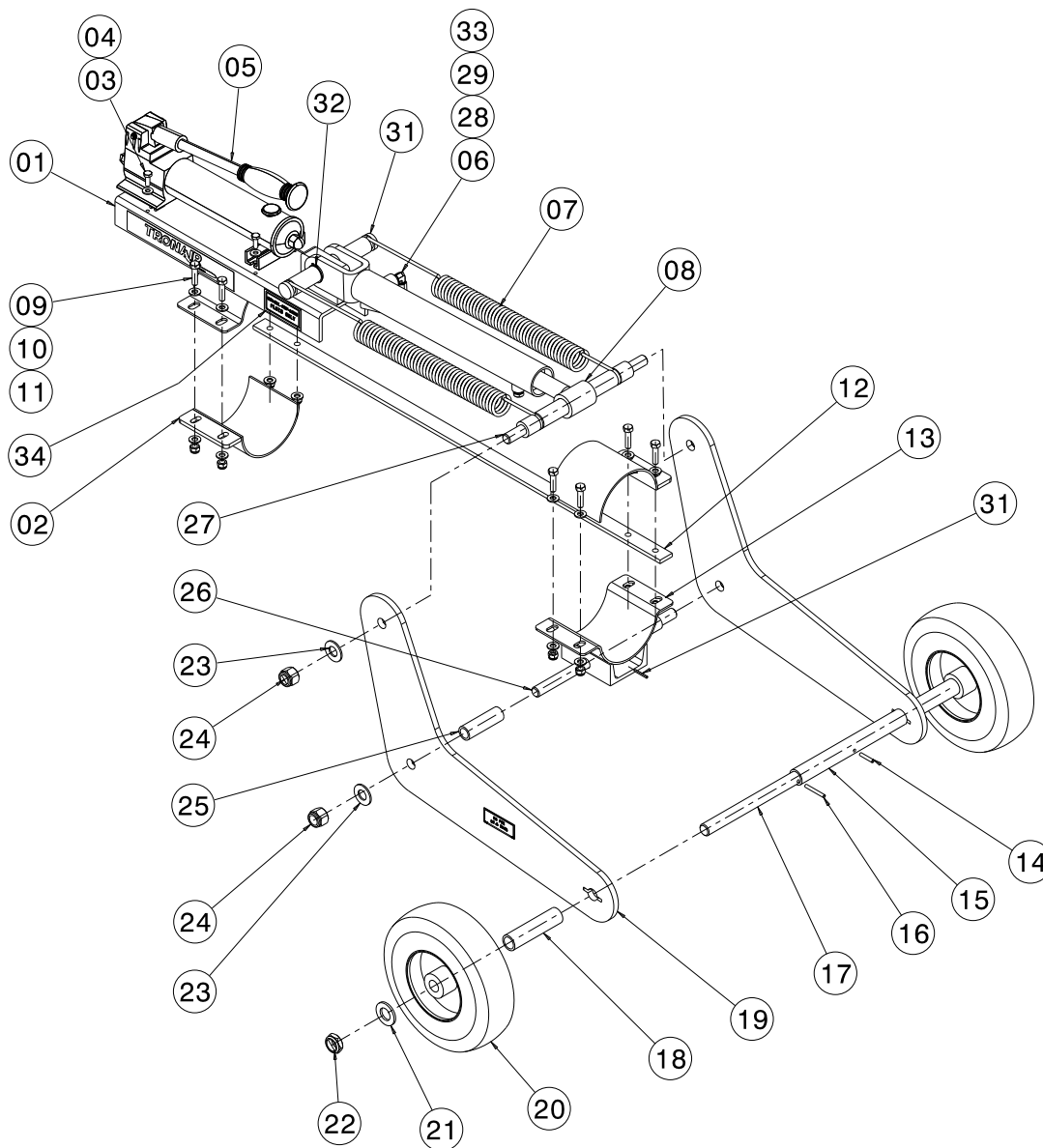
## 8.0 APPENDICES

APPENDIX I Declaration of Conformity

This page left blank intentionally.

## Parts List

When ordering replacement parts/kits, please specify model, serial number and color of your unit.



| Item | Part Number   | Description                        | Qty |
|------|---------------|------------------------------------|-----|
| 1    | Z-6534-01     | Weldment, Pump Mount               | 1   |
| 2    | Z-6584-01     | Weldment, Strap Clamp              | 1   |
| 3    | G-1250-1050N  | Flatwasher, ¼ ID Narrow            | 4   |
| 4    | G-1100-105506 | Bolt, HH, GR 5, ¼ - 28 x ¾ LG      | 4   |
| 5    | H-2945        | Pump, Hydraulic                    | 1   |
| 6    | N-2001-03-S-B | Elbow, STR Thread                  | 1   |
| 7    | H-2664        | Spring, Extension                  | 2   |
| 8    | HC-2119       | Cylinder, Hydraulic                | 1   |
| 9    | G-1250-1060N  | Flatwasher, 5/16 Narrow            | 16  |
| 10   | G-1100-106514 | Bolt, HH, GR 5, 5/16 - 24 x 1 ½ LG | 8   |
| 11   | G-1202-1065   | ESN, 5/16 - 24                     | 8   |

**Parts List**

| Item | Part Number    | Description                        | Qty |
|------|----------------|------------------------------------|-----|
| 12   | J-4082-01      | Bar, Connector                     | 1   |
| 13   | Z-6535-01      | Bracket, Axle                      | 1   |
| 14   | G-1300-19100   | Roll Pin, 3/16" diameter x 1" long | 1   |
| 15   | TR-1796-01     | Tube, Landing Gear                 | 1   |
| 16   | G-1300-19140   | Roll Pin, 3/16" diameter x 1" long | 1   |
| 17   | R-2086         | Axle, Landing Gear                 | 1   |
| 18   | TR-1795-01     | Spacer, Wheel                      | 2   |
| 19   | J-3435-01      | Landing Gear Plate                 | 2   |
| 20   | U-1096         | Wheel, Pneumatic Tire              | 2   |
| 21   | G-1250-1110N   | Flatwasher, 3/4 Narrow             | 2   |
| 22   | G-1203-1115    | Jamnut, 3/4 - 16 Elastic           | 2   |
| 23   | G-1250-1100N   | Flatwasher, 5/8 Narrow             | 4   |
| 24   | G-1202-1105    | Stopnut, 5/8 Elastic               | 4   |
| 25   | TR-1819-01     | Spacer, Wheel                      | 2   |
| 26   | R-2099         | Axle, Landing Gear                 | 1   |
| 27   | R-2097         | Pin, Pivot                         | 1   |
| 28   | N-2005-04-S    | Elbow, Male #4-6                   | 1   |
| 29   | TF1043-18*21.0 | Assembly, Hose (#4 MB)             | 1   |
| 30   | R-2084         | Pin, Cylinder                      | 1   |
| 31   | G-1300-13100   | Roll Pin, 1/8" diameter x 1" long  | 1   |
| 32   | G-1392-100-S   | Ring, Retaining                    | 2   |
| 33   | N-2002-3-S     | Elbow, Swivel Nut                  | 1   |
| 34   | V-1102         | Label, MIL-PRF-5606                | 2   |







## **APPENDIX I**

### **Declaration of Conformity**





## DECLARATION of CONFORMITY

The design, development and manufacture is in accordance with European Community guidelines

Landing Gear Assembly Kit  
K-4076

Relevant provisions complied with by the machinery:  
2006/42/EC

Relevant standards complied with by the machinery:  
EN ISO 12100-1

Identification of person empowered to sign on behalf of the Manufacturer:

A handwritten signature in cursive script that reads "Patrick Finch". The signature is written in dark ink and is positioned above a horizontal line.

Quality Assurance Representative