

**Model: K-4664**  
**Lear 45 APU Lift Kit**



08/2013 – Rev. 03

**When ordering Replacement Parts/Kits, please specify Model and Serial Number of your Unit.**

This product cannot be modified without the written approval of Tronair, Inc. Any modifications done without written approval voids all warranties and releases Tronair, Inc., its suppliers, distributors, employees, or financial institutions from any liability from consequences that may occur. Only Tronair OEM replacement parts shall be used.

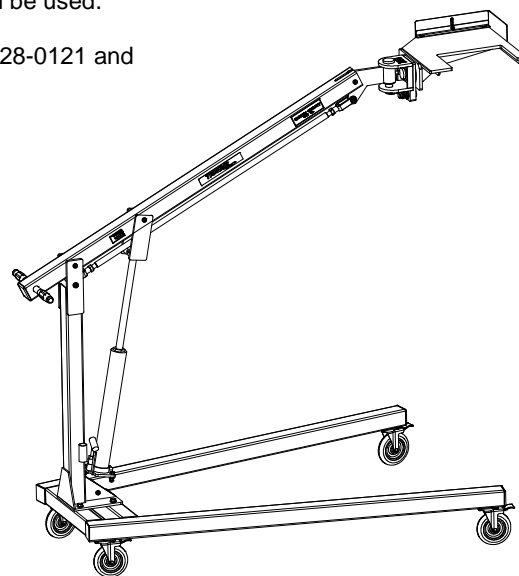
**DESCRIPTION:** This kit is manufactured for use with the Tronair Model 04-6028-0121 and 04-6028-0121-A1 Universal Lift.

**INSIDE TRAY DIMENSIONS:**

Length: 24.75 in (62.9 cm)  
Width: 19.75 in (50.2 cm)  
Height: 10 in (25.4 cm)  
Weight: 30 lbs (13.6 kg)  
Capacity: 150 lbs (68 kg)

**OPERATING INSTRUCTIONS:**

1. Attach K-4664 to Tronair Models 04-6028-0121, 04-6028-0121-A1, or 04-6028-0121SP Universal Lift
2. Place Lear 45 APU in K-4664 as shown in Figure 1. Tighten clamp on APU. Install through baggage bay door
3. Rotate K-4664 90° as shown in Figure 2
4. Tilt K-4664 45° so APU can be positioned up and over the bulkhead as shown in Figure 3
5. Loosen clamp and slide APU into position
6. Once APU is in position lower stand and remove from baggage bay
7. Follow AMM for securing and completing installation



K-4664 SHOWN IN  
04-6028-0121-A1 STAND

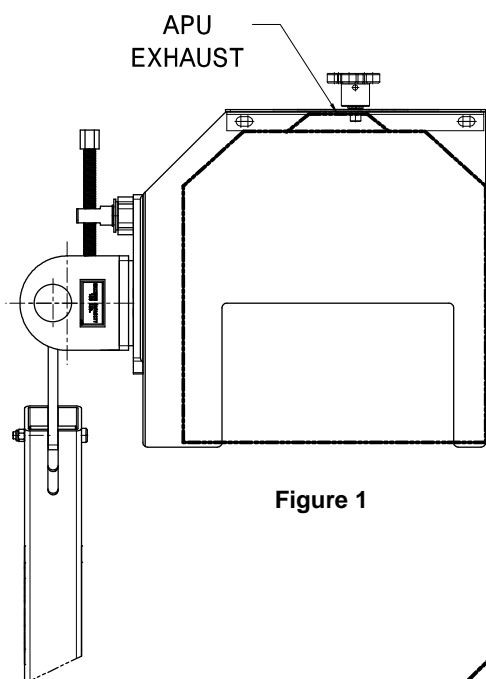


Figure 1

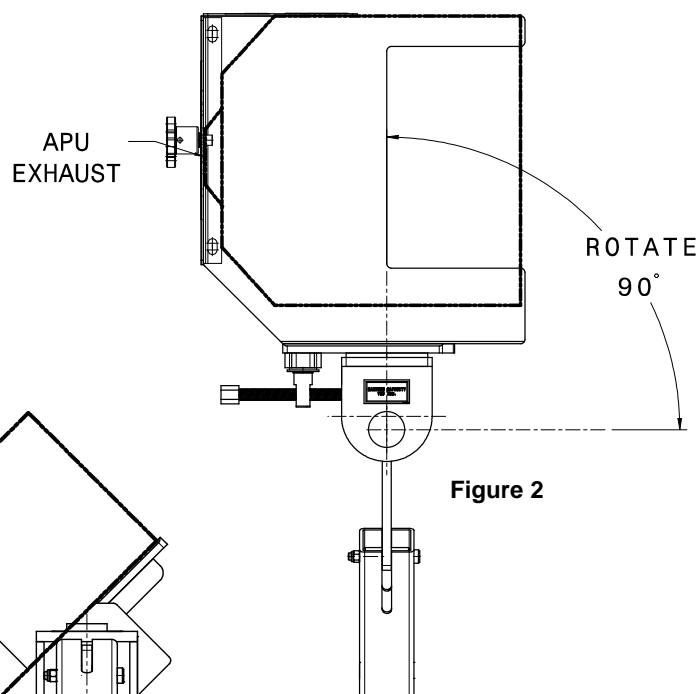


Figure 2

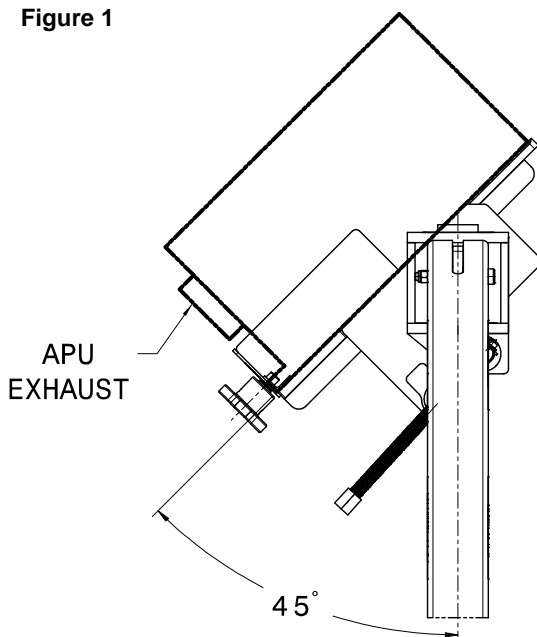
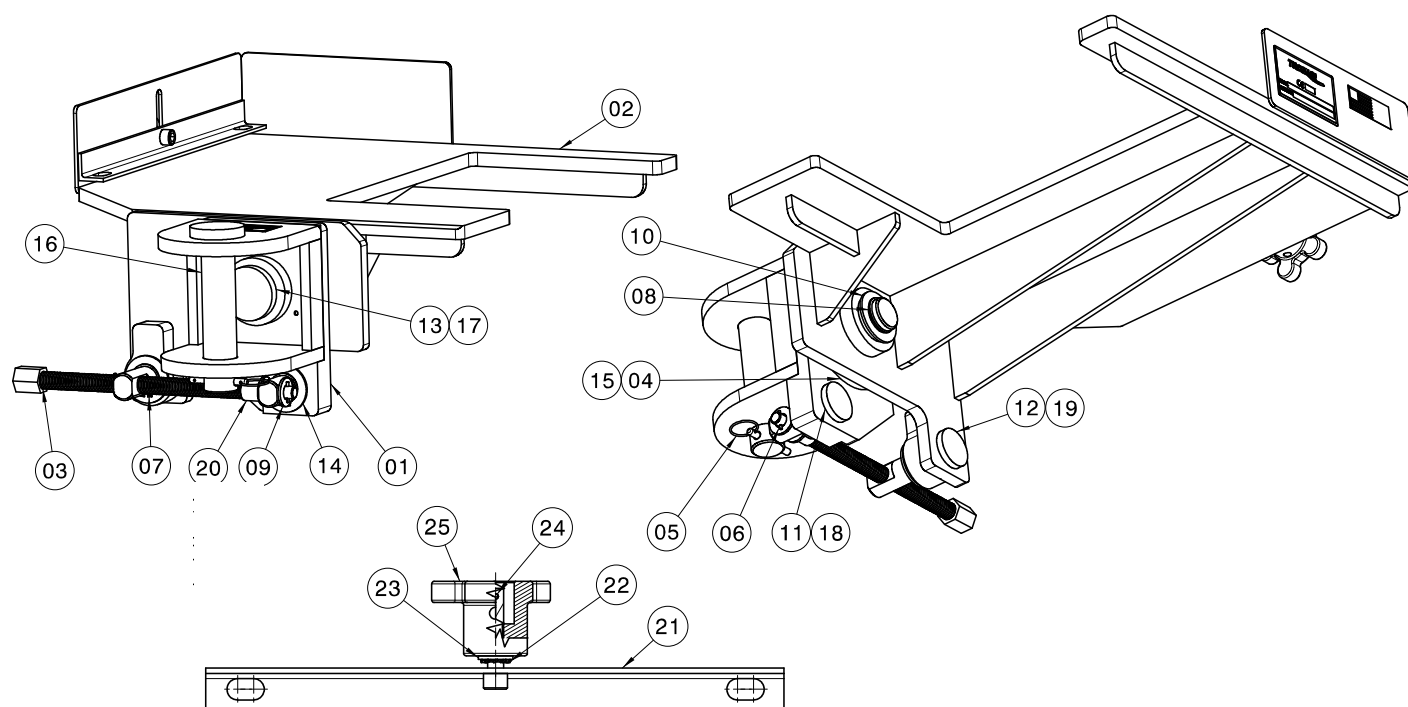


Figure 3

## Parts List

When ordering Replacement Parts/Kits, please specify Model, Color and Serial Number of your Unit



K-4837, KIT, CLAMP ASSEMBLY

Item	Part Number	Description	Qty
1	Z-8113-01	Weldment, Lift Housing	1
2	Z-8116-01	Weldment, Lifting Mount	1
3	Z-8132-01	Weldment, Threaded Rod	1
4	G-1152-103204	Screw, SOC Flat Head 82°, #10-24 x ½ Long	3
5	G-1307-0415	Pin, ¼ x 1.5 Long, Model C	1
6	G-1300-09060	Pin, Roll 3/32 x .75	2
7	G-1392-100-H	Ring, External Retaining	2
8	G-1392-125-H	Ring, External Retaining	1
9	G-1513-1090N	Flatwasher, ½ ID, Narrow, Hardened	2
10	G-1513-1140N	Flatwasher, 1 ¼ ID, Narrow, Hardened	1
11	H-2019-72	Bearing, Flange	1
12	H-2019-73	Bearing, Flange	1
13	H-2019-80	Bearing, Flange	2
14	H-3661	Washer, Modified	2
15	J-5440	Pad	1
16	R-2766	Pin, Mounting	1
17	R-2767	Pin, Rotating	1
18	R-2769	Pin, Support	1
19	R-2770	Pin, Rotating	1
20	TR379-06-000.75	Bushing	1
	<b>K-4837</b>	<b>Kit, Clamp Assembly; consists of:</b>	
21	Z-8261-01	Weldment, Clamp	1
22	G-1253-03	External, Tooth Lockwasher	1
23	G-1513-1070N	Flatwasher, Thru Hard ¾ ID	1
24	G-1300-13040	Rollpin, ⅜ x ½ Long	1
25	H-3707-01	Knob, Modified	1



## DECLARATION of CONFORMITY

The design, development and manufacture is in accordance with European Community guidelines

Description  
K-4664

Relevant provisions complied with by the machinery:  
2006/42/EC

Relevant standards complied with by the machinery:  
EN ISO 12100-1

Identification of person empowered to sign on behalf of the manufacturer:

A handwritten signature in black ink, reading "David L. Kiehl". The signature is written in a cursive style with a large, looped "D" and "K".

Quality Assurance Representative