

Models: 04-6029-5111
04-6029-5111-A5
04-6025-5111-A6
04-6025-5111-A7
B4 Type Maintenance Platform



12/2025 – Rev. 11

For Spare Parts, Operations & Service Manuals or Service Needs
Scan the QR code or visit Tronair.com/aftermarket



The Tronair Group of Companies: Tronair | Columbus Jack | Eagle | Malabar International

Tronair, Inc.
1 Air Cargo Pkwy East
Swanton, OH 43558

Phone: (419) 866-6301 | 800-426-6301
Web: www.tronair.com
Email: sales@tronair.com

REVISION	DATE	TEXT AFFECTED
04	02/2006	Modified Part List and Illustration
05	09/2006	Modified Part List and Illustration
06	04/2007	Modified Part List
07	07/2007	Modified Parts List
08	10/2009	Added CE mark and Declaration of Conformity, Modified Parts List
09	03/2025	Major revision, added model numbers
10	04/2025	Modified 04-6029-5111-A6 Parts List
11	12/2025	Added 04-6029-5111-A7 Parts List

TABLE OF CONTENTS

PAGE

1.0	PRODUCT INFORMATION	1
1.1	DESCRIPTION.....	1
1.2	MODEL & SERIAL NUMBER.....	1
1.3	MANUFACTURER.....	1
1.4	SPECIFICATIONS	1
2.0	SAFETY INFORMATION.....	1
2.1	USAGE AND SAFETY INFORMATION	1
3.0	TRAINING.....	1
3.1	TRAINING REQUIREMENTS	1
3.2	TRAINING PROGRAM	1
3.3	OPERATOR TRAINING.....	1
4.0	OPERATION INSTRUCTIONS	2
5.0	INSPECTION/MAINTENANCE	3
5.1	BEFORE EACH USE	3
5.2	PERIODICALLY	3
5.3	ANNUALLY	3
5.4	PERIODIC INSPECTION.....	3
5.5	LOAD TEST	4
6.0	PROVISION OF SPARES.....	5
6.1	SOURCE OF SPARE PARTS.....	5
6.2	PARTS LISTS & ILLUSTRATIONS.....	5
7.0	IN-SERVICE SUPPORT.....	5
8.0	GUARANTEES/LIMITATION OF LIABILITY.....	5
9.0	APPENDICES	5

This product can not be modified without the written approval of Tronair, Inc. Any modifications done without written approval voids all warranties and releases Tronair, Inc., its suppliers, distributors, employees, or financial institutions from any liability from consequences that may occur. Only Tronair OEM replacement parts shall be used.

1.0 PRODUCT INFORMATION

1.1 DESCRIPTION

The Tronair B4 Type Maintenance Platform is shipped completely assembled and ready for use.

Some important features include:

- Mechanical Platform Stops
- Removable Side Rails
- Hydraulic Foot Pedal
- Locking Swivel Casters
- Towbar
- Optional Pneumatic Foot Pedal
- 04-6029-5111-A5 and 04-6029-5111-A6 only: Self Closing Gate
- 04-6029-5111-A6 only: CAL-OSHA compliant
- 04-6029-5111-A7 only: CAL-OSHA compliant with short rails

1.2 MODEL & SERIAL NUMBER

Reference nameplate on unit

1.3 MANUFACTURER

TRONAIR, Inc.
1 Air Cargo Pkwy East
Swanton, Ohio 43558 USA

Telephone: (419) 866-6301 or 800-426-6301
Fax: (419) 867-0634
E-mail: sales@tronair.com
Website: www.tronair.com

1.4 SPECIFICATIONS

Capacity 500 lbs
Work Platform Area 3 ft x 8 ft
Lowered Platform Height 3½ ft
Raised Platform Height 7 ft

2.0 SAFETY INFORMATION

2.1 USAGE AND SAFETY INFORMATION

To ensure safe operations please read the following statements and understand their meaning. Also refer to your equipment manufacturer's manual for other important safety information. This manual contains safety precautions which are explained below. Please read carefully.



WARNING! — Warning is used to indicate the presence of a hazard that **can cause severe personal injury, death, or substantial property damage** if the warning notice is ignored.

CAUTION! — Caution is used to indicate the presence of a hazard that **will or can cause minor personal injury or property damage** if the caution notice is ignored.

3.0 TRAINING

3.1 TRAINING REQUIREMENTS

The employer of the operator is responsible for providing a training program sufficient for the safe operation of the unit.

3.2 TRAINING PROGRAM

The employer provided operator training program should cover safety procedures concerning use of the unit in and around the intended aircraft at the intended aircraft servicing location.

3.3 OPERATOR TRAINING

The operator training should provide the required training for safe operation of the unit.

NOTE: Maintenance and Trouble Shooting are to be performed by a skilled and trained technician.

4.0 OPERATION INSTRUCTIONS

1. Check reservoir level. Fill as required with MIL-PRF-5606 hydraulic oil.
2. Ensure mechanical stop pins are not in the stop holes before raising the platform.
3. Raise the platform by pumping the foot pump until the desired height has been reached.
4. Install the mechanical stops. If the hole is blocked, install pins into next hole down.
5. While working on the platform, it is recommended that the safety chain and the railings remain in place.
6. When the platform is in use, it should always be locked in place with the mechanical stop pins.

**CAUTION!**

Never use the ladder while the platform is raised or lowering.

7. The platform is lowered by first raising it off the mechanical stop pins.
8. Remove the mechanical stop pins.
9. Actuate the relief foot valve on the pump to lower the platform.

**CAUTION!**

1. **Always ensure the ladder and scissors area are clear of obstacles and/or personnel before lowering.**
2. **Never tow the platform with personnel on it.**
3. **If the platform experiences a sudden downward surge, the velocity fuse will be activated and the platform will immediately stop lowering. In order to reset the fuse, the relief foot valve on the pump must be depressed and released and the foot pump pedal must be quickly depressed to reset the pump. Failure to reset the fuse through the foot pump could result in pump damage and will cause the platform to no longer raise.**
4. **Never lean over, lean against or climb onto the rails, posts or gate for any reason.**

5.0 INSPECTION/MAINTENANCE

5.1 BEFORE EACH USE

Visually inspect unit to ensure all components are present and functional

- All pivot bolts & nuts are secure
- Pump is free of leaks & relief valve is operational
- All casters & locks are operational
- No bent or broken components



WARNING!

Ensure platform components are free of damage and or excessive wear. Never use platform if any component is bent or broken

5.2 PERIODICALLY

1. Lubricate platform
 - All pivot points
 - Threaded adjustment areas
2. Check cylinder reservoir level. Replenish with MIL-PRF-5606
 - Ensure Fluid is at acceptable level
 - Flush reservoir if fluid is contaminated

5.3 ANNUALLY

Safely perform load test with 625 lb test weight.

5.4 PERIODIC INSPECTION

A qualified inspector shall perform a complete inspection at the following intervals

SERVICE	INTERVAL	
Normal	Yearly	Inspect equipment at site of use. Operation with various weights within the rated load limit, or uniform loads less than 65 percent of rated load
Heavy	Semi-Annual	Inspect equipment at site of use unless external conditions indicate that disassembly should be done to permit detailed inspection. Operation within the rated load limit that exceeds normal service
Severe	Quarterly	Inspect equipment at site of use unless external conditions indicate that disassembly should be done to permit detailed inspection. Operation at normal or heavy service under abnormal operating conditions
Special/ Infrequent	As recommended by a qualified person before the first such use and as directed by the qualified person for any subsequent uses	

5.5 LOAD TEST

WARNING!



Use safety stops anytime personnel climb on or off of platform when it is not in the rest (collapsed) position. NEVER place hands/body under the platform when it is in the raised position. The platform must be in the collapsed position or supported by a crane before performing any work to the platform.



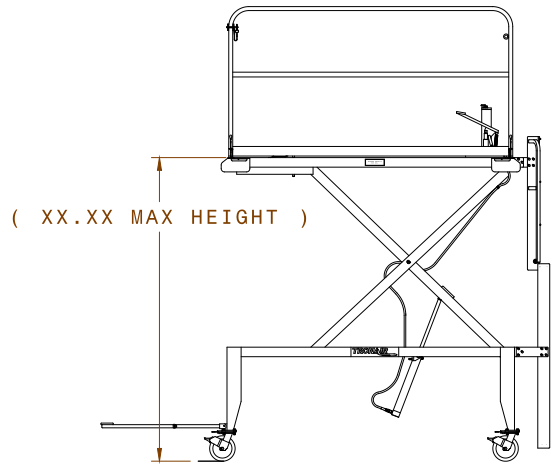
CAUTION!

Do NOT allow personnel on the platform during testing.

FOLLOW PROCEDURE IN ORDER GIVEN

Ensure hydraulic reservoir fluid is at an acceptable level.

1. Using foot pump, raise platform from lowest to highest position. Dismount Platform.
2. With platform at its highest position, load with 625 lbs.
3. The rated capacity shall not be more than 80 percent of the maximum load sustained during the test. Test loads shall not be more than 125 percent of the rated capacity unless otherwise recommended by the manufacturer.
4. Hold platform at highest position for two (2) minutes. Ensure that platform does not lower at any time. If platform loses height, check for hydraulic leaks.
5. Remove the 625 lb testing weight. Ensure that platform rises and lowers free of bind and/or excessive drag. Record minimum and maximum height.
6. Visually inspect that welded joints and bolted components are secure, and no damage has occurred.



MIN HEIGHT (+/-2")	RECORD MIN HEIGHT	MAX HEIGHT (+/-2")	RECORD MAX HEIGHT
40 1/16		88	

6.0 PROVISION OF SPARES**6.1 SOURCE OF SPARE PARTS**

Spare parts may be obtained from the manufacturer:

TRONAIR, Inc.

1 Air Cargo Pkwy East

Swanton, Ohio 43558 USA

Telephone: (419) 866-6301 or 800-426-6301

Fax: (419) 867-0634

E-mail: sales@tronair.com

Website: www.tronair.com



For Spare Parts, Operations & Service Manuals or Service Needs:

Scan the QR code or visit Tronair.com/aftermarket

6.2 PARTS LISTS & ILLUSTRATIONS

Reference the following page for Replacement Parts and Kits available.

7.0 IN-SERVICE SUPPORT

Contact Tronair, Inc. for technical services and information.

8.0 GUARANTEES/LIMITATION OF LIABILITY

Tronair products are warranted to be free of manufacturing or material defects for a period of one year after shipment to the original customer. This is solely limited to the repair or replacement of defective components. This warranty does not cover the following items:

- a) Parts required for normal maintenance
- b) Parts covered by a component manufacturers warranty
- c) Replacement parts have a 90-day warranty from date of shipment

If you have a problem that may require service, contact Tronair immediately. Do not attempt to repair or disassemble a product without first contacting Tronair, any action may affect warranty coverage. When you contact Tronair be prepared to provide the following information:

- a) Product Model Number
- b) Product Serial Number
- c) Description of the problem

If warranty coverage is approved, either replacement parts will be sent or the product will have to be returned to Tronair for repairs. If the product is to be returned, a Return Material Authorization (RMA) number will be issued for reference purposes on any shipping documents. Failure to obtain a RMA in advance of returning an item will result in a service fee. A decision on the extent of warranty coverage on returned products is reserved pending inspection at Tronair. Any shipments to Tronair must be shipped freight prepaid. Freight costs on shipments to customers will be paid by Tronair on any warranty claims only. Any unauthorized modification of the Tronair products or use of the Tronair products in violation of cautions and warnings in any manual (including updates) or safety bulletins published or delivered by Tronair will immediately void any warranty, express or implied.

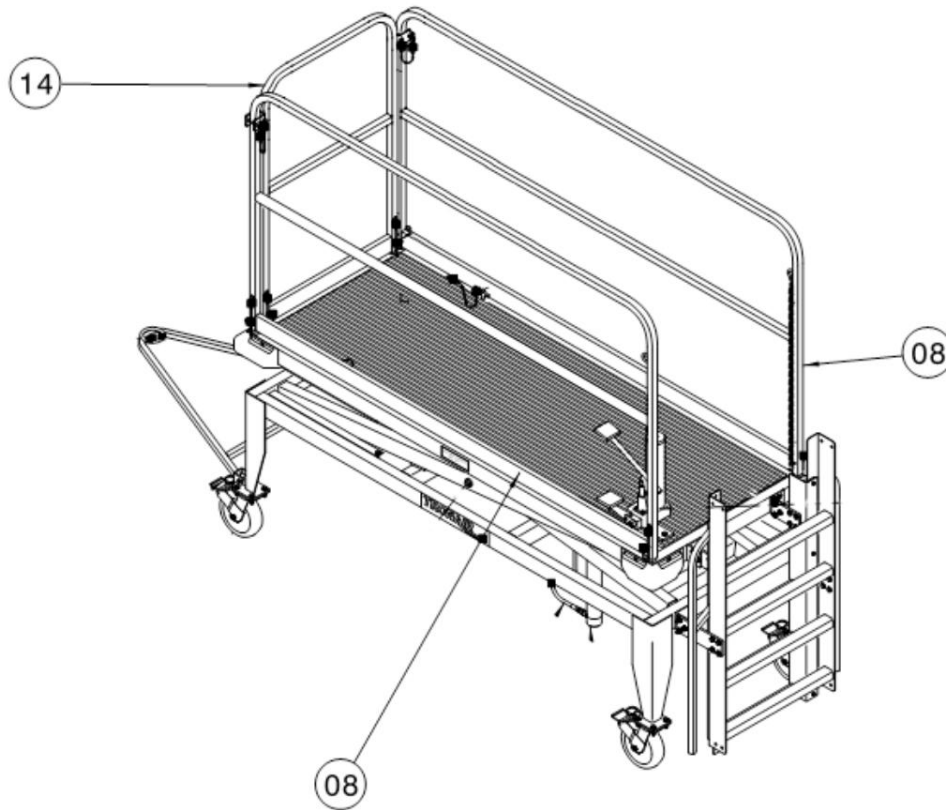
The obligations of Tronair expressly stated herein are in lieu of all other warranties or conditions expressed or implied. **Any unauthorized modification of the Tronair products or use of the Tronair products in violations of cautions and warnings in any manual (including updates) or safety bulletins published or delivered by Tronair will immediately void any warranty, express or implied and Tronair disclaims any and all liability for injury (WITHOUT LIMITATION and including DEATH), loss or damage arising from or relating to such misuse.**

9.0 APPENDICES

APPENDIX I Declaration of Conformity

04-6029-5111 - Parts List

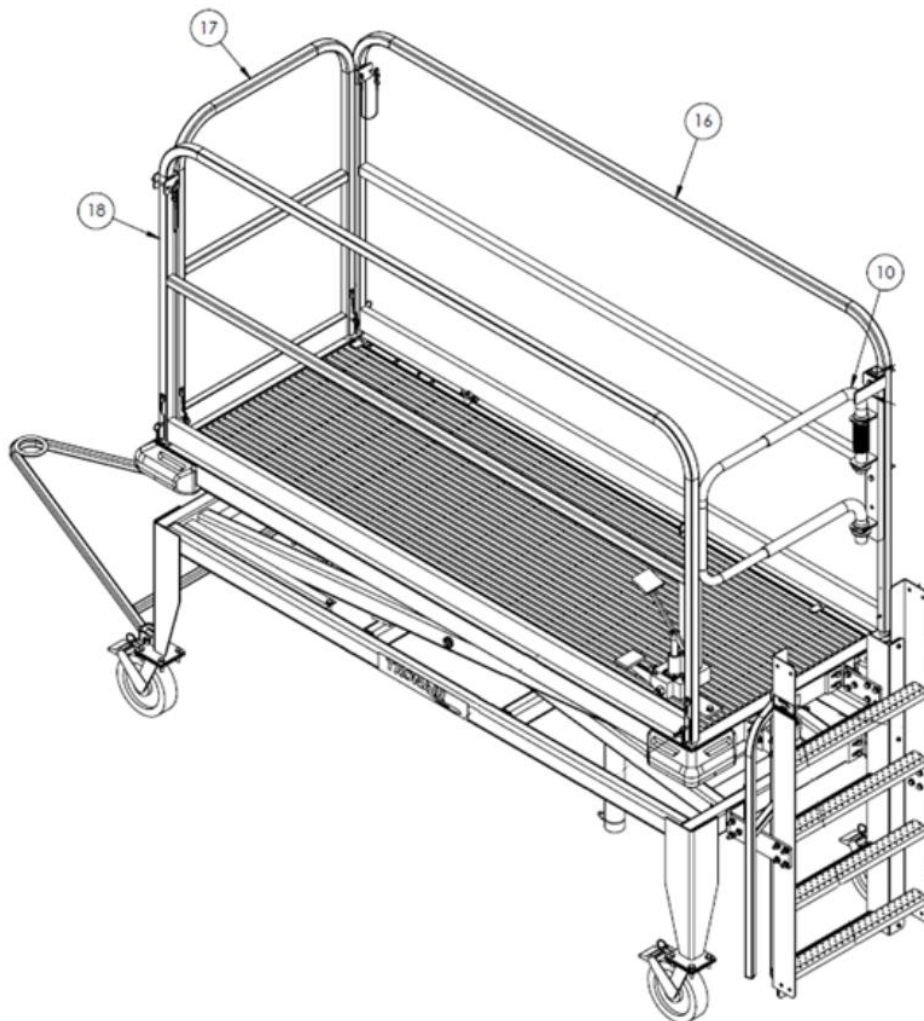
When ordering replacement parts/kits, please specify model, serial number and color of your unit.



Item	Part Number	Description	Qty
8	Z-4405-00	ASSEMBLY, SIDE RAIL	2
14	Z-4402	ASSEMBLY, END RAIL	1

04-6029-5111-A5 - Parts List

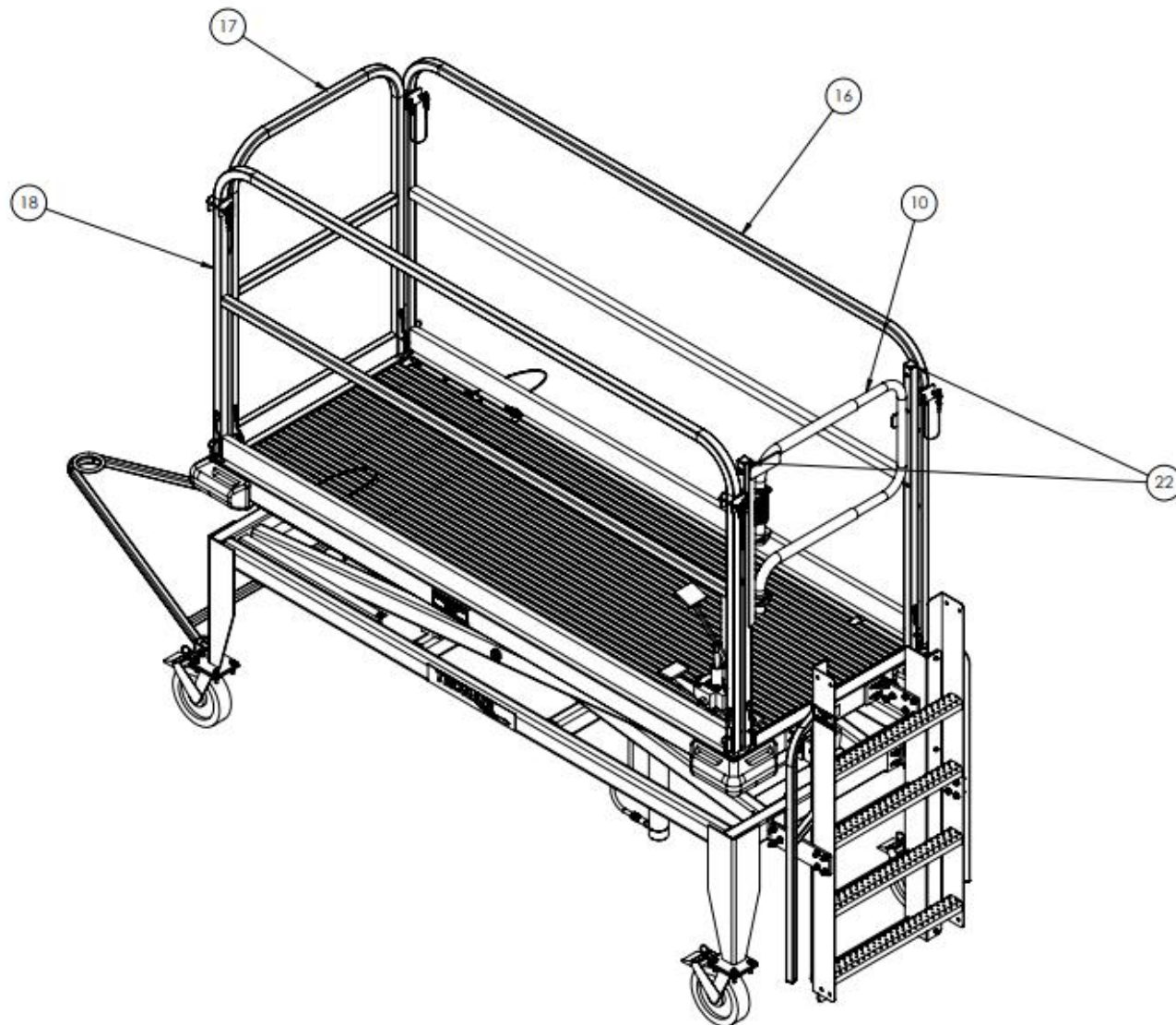
When ordering replacement parts/kits, please specify model, serial number and color of your unit.



Item	Part Number	Description	Qty
10	H-3622	SAFETY GATE, SPRING-CLOSE	1
16	Z-8037-00	WELDMENT, SIDE RAIL	1
18	Z-8039-00	WELDMENT, SIDE RAIL	1
17	Z-4402	ASSEMBLY, END RAIL	1

04-6029-5111-A6 - Parts List

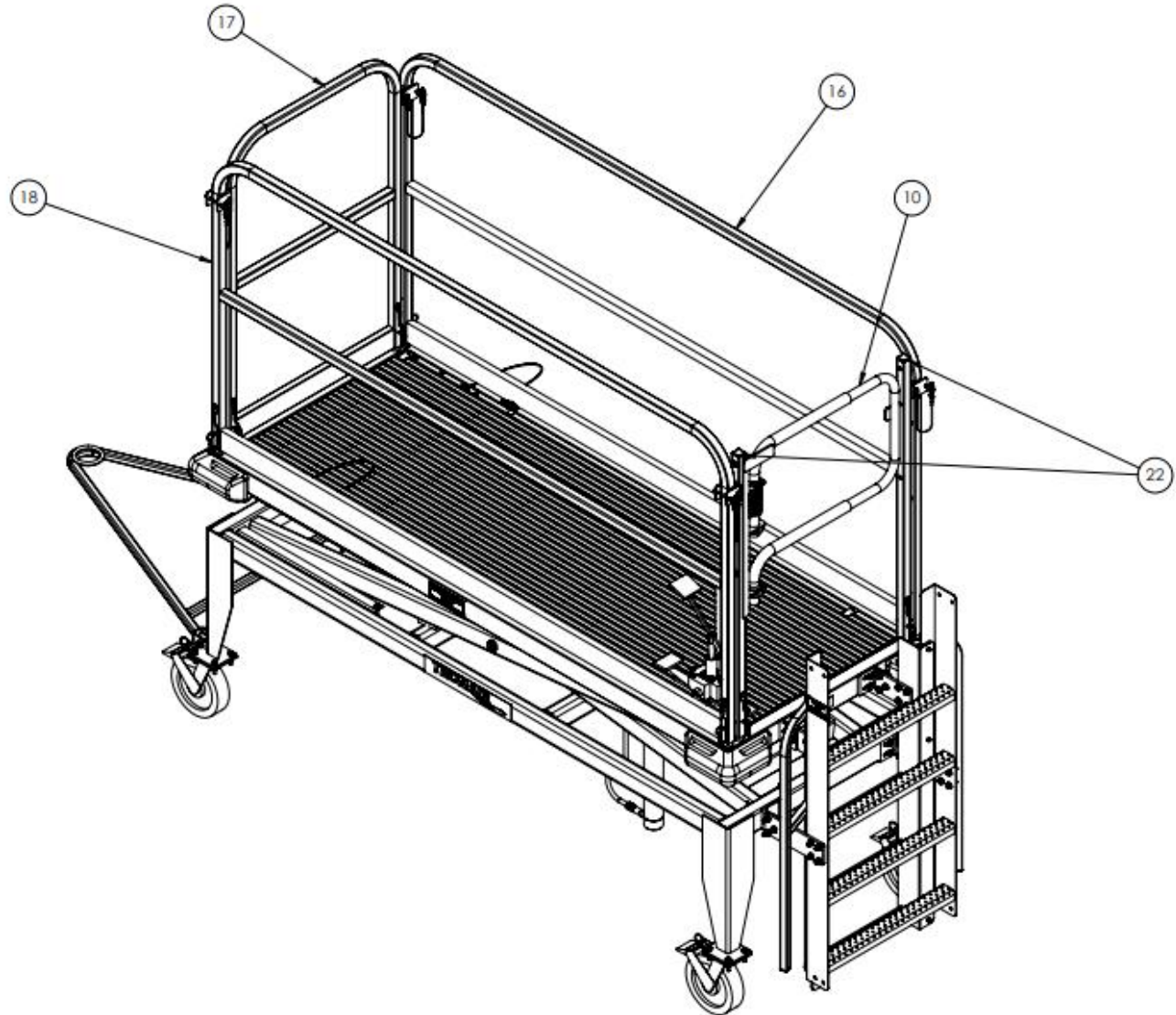
When ordering replacement parts/kits, please specify model, serial number and color of your unit.



Item	Part Number	Description	Qty
10	H-3622	SAFETY GATE, SPRING-CLOSE	1
16	Z-12758-00	WELDMENT, SIDE RAIL	1
17	Z-12759	ASSEMBLY, END RAIL	1
18	Z-12760-00	WELDMENT, SIDE RAIL	1
22	Z-12786	ASSEMBLY, GATE POST	2

04-6029-5111-A7 - Parts List

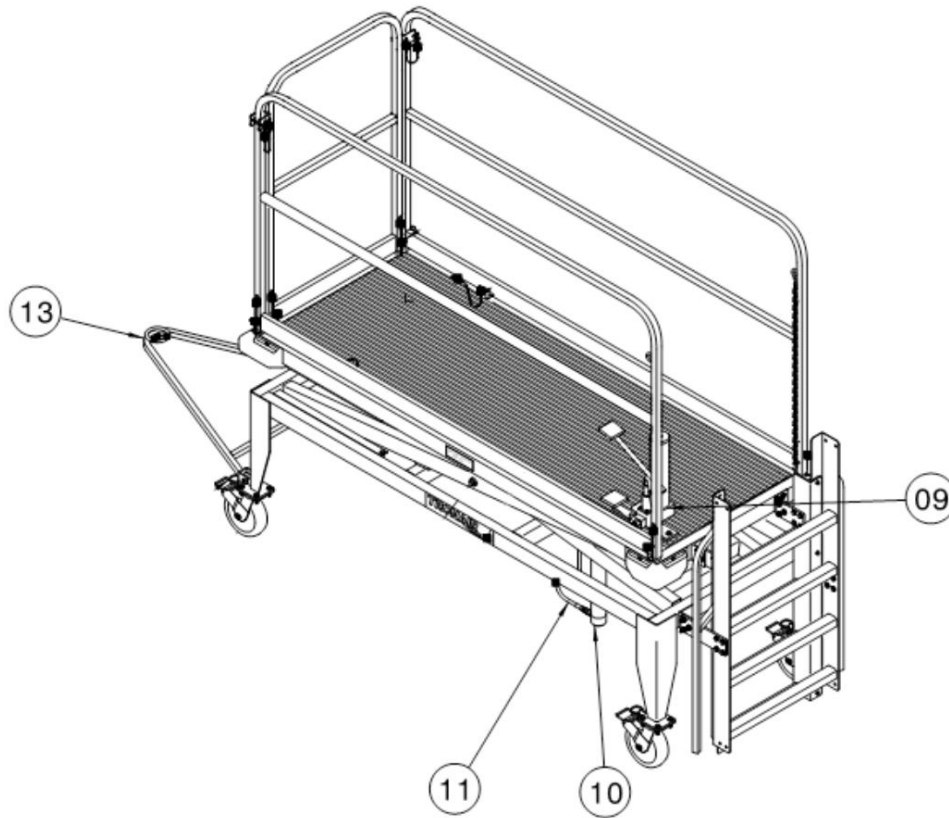
When ordering replacement parts/kits, please specify model, serial number and color of your unit.



Item	Part Number	Description	Qty
10	H-3622	SAFETY GATE, SPRING-CLOSE	1
16	Z-12996-00	WELDMENT, SIDE RAIL	1
17	Z-12995	ASSEMBLY, END RAIL	1
18	Z-12996-00	WELDMENT, SIDE RAIL	1
22	Z-12997	ASSEMBLY, GATE POST	2

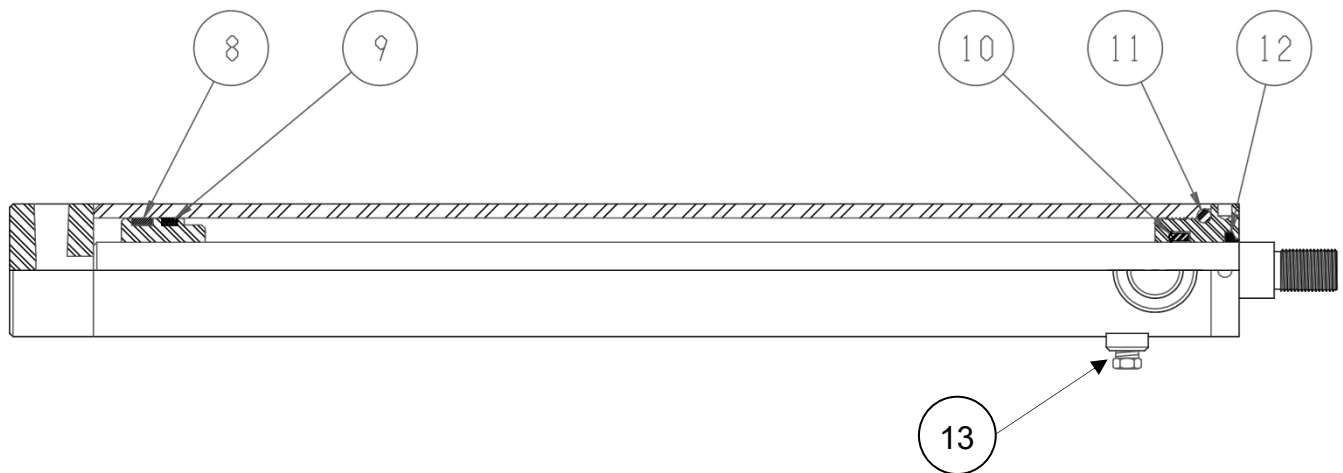
All Models - Parts List

When ordering replacement parts/kits, please specify model, serial number and color of your unit.



Item	Part Number	Description	Qty
9	HC-1888-01	PUMP, HYDRAULIC FOOT	1
11	TF-1043-03*120	ASSEMBLY, HOSE	1
13	Z-4771	ASSEMBLY, B4 STAND TOWBAR	1
	K-3289	KIT, CASTER REPLACEMENT; consists of:	
6	G-1100-107014	BOLT, HEX HEAD, GRADE 5, 3/8-16 X 1-1/2" LONG	4
	G-1202-1070	STOPNUT, 3/8-16 ELASTIC	4
	G-1250-1070N	FLATWASHER, 3/8 NARROW	8
	U-1085	CASTER, SWIVEL	1
	U-1087	LOCK, DE-MOUNTABLE SWIVEL	1

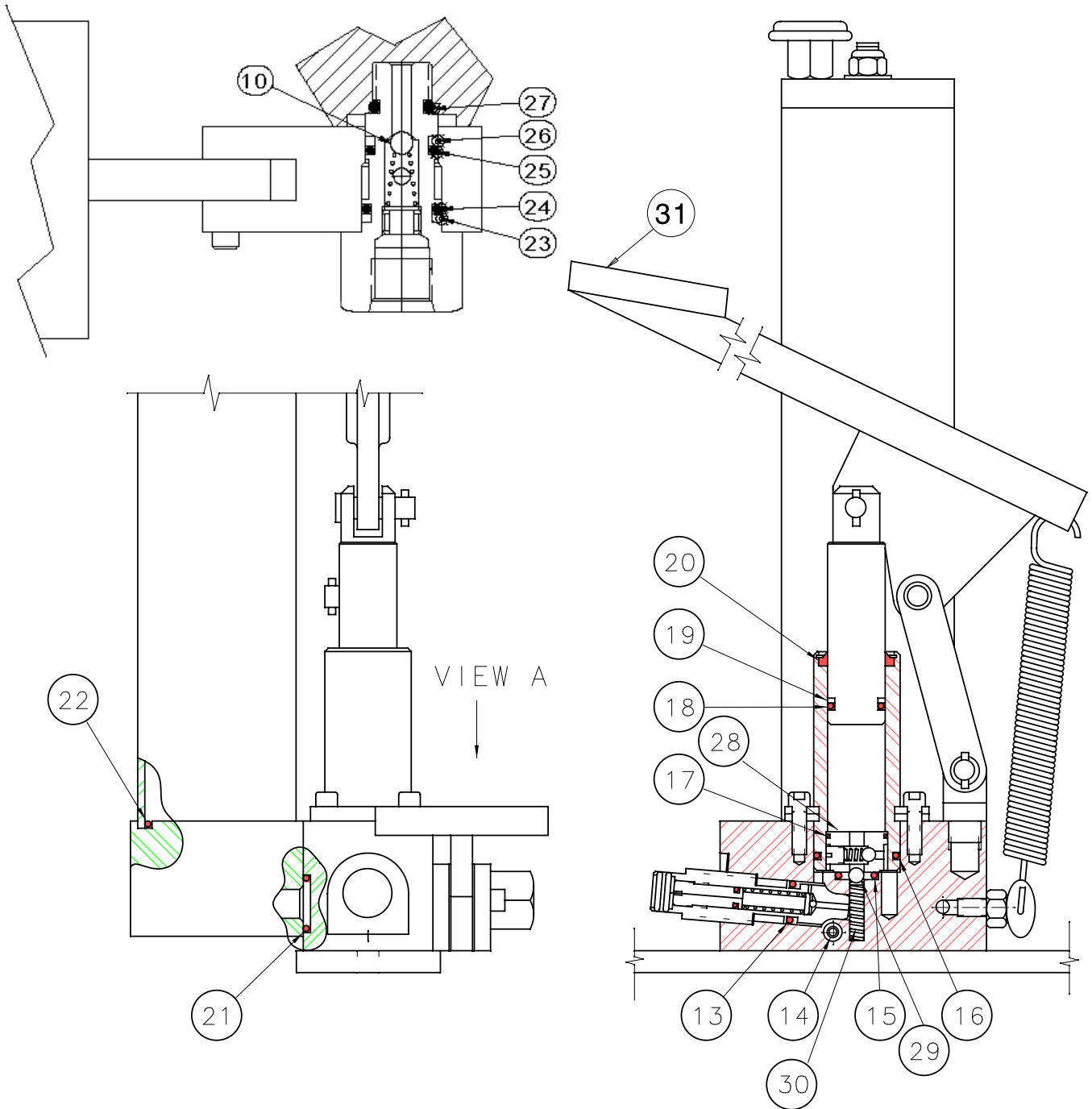
Parts List - Replacement Cylinder Seal Kit



Item	Part Number	Description	Qty
	K-3291	KIT, CYLINDER SEALS REPLACEMENT; consists of:	
8		RING, SEAL	1
9		SEAL, PSP	1
10		POLYPAK	1
11		O-RING	1
12		WIPER, ROD	1
13	N-2523-01	FITTING, VENT PLUG, 1/8"	1

This page left blank intentionally.

Parts List - Replacement Pump Seal Kit



Parts List - Replacement Pump Seal Kit

Item	Part Number	Description	Qty
31	H-3046	LEVER, FOOT PEDAL	1
	K-4361	KIT, PUMP SEAL REPLACEMENT; consists of:	
10		BALL, INLET CHECK	2
13		O-RING, RELEASE SCREW	1
14		O-RING, OUTLET	1
15		O-RING, OUTLET CHECK	1
16		O-RING, TUBE SEAL	1
17		O-RING, VALVE BODY	1
18		O-RING, PISTON	1
19		BACKUP RING, PISTON	1
20		WIPER, ROD	1
21		O-RING, RESERVOIR MOUNT	1
22		O-RING, RESERVOIR SEAL	1
23		BACKUP RING, PISTON	1
24		O-RING, PISTON	1
25		O-RING, PISTON	1
26		BACKUP RING, PISTON	1
27		O-RING, SEAL	1
28		VALVE BODY	1
29		BALL, OUTLET CHECK	1
30		SPRING, OUTLET CHECK	1



APPENDIX I

Declaration of Conformity



EU Declaration of Conformity

Model Number(s) 04-6029-5111, 04-6029-5111-A5, 04-6029-5111-A6
Product Type/Name: B4 Type Maintenance Platform

Declaration: Tronair has assessed the equipment described above against the Essential Health and Safety Requirements of one or more Directives. Based on this assessment, the equipment described above is deemed to comply with the directive(s) listed below.

This declaration of conformity is issued under the sole responsibility of the manufacturer.

Directives: European Machinery Directive 2006/42/EC

Standards: EN 1915-1:2001 Aircraft ground support equipment - General requirements-basic safety
EN 12312-8:1997 Aircraft ground support equipment
Specific requirements maintenance or service stairs and platforms

Markings: 

The technical documentation for the machinery is available from:

RAUH Hydraulic GmbH
Hallstadtler Straße 63
Email: tronair@rauh-hydraulik.de

Location of Issue: Tronair, 1 Air Cargo Parkway East, Swanton, OH 43558

Identification of person empowered to sign on behalf of the Manufacturer:


Quality Assurance Representative